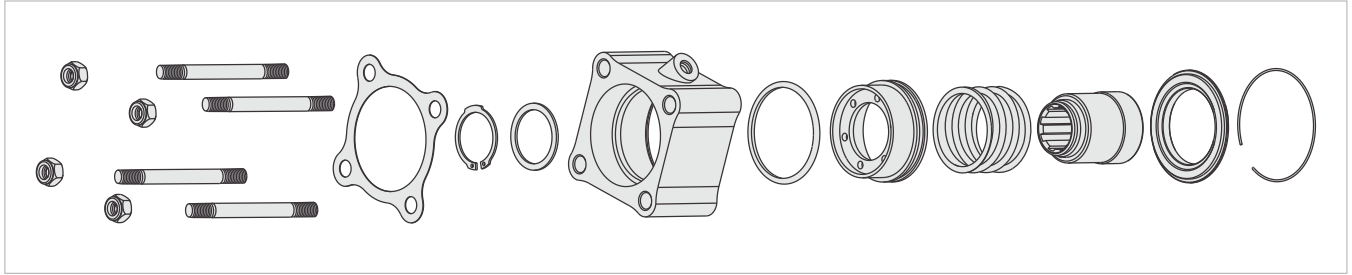
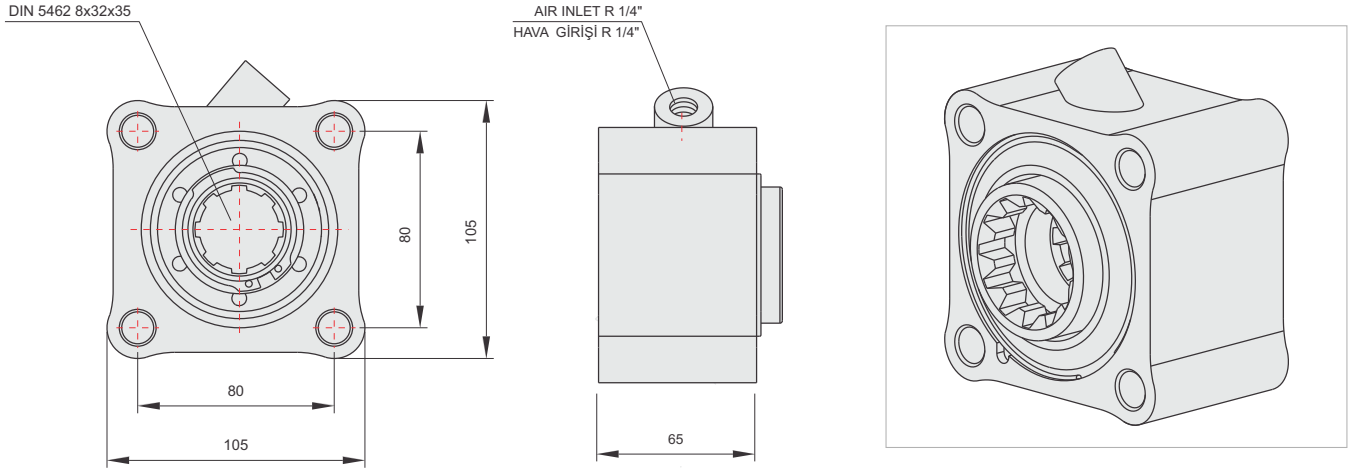


# ZF1 Power Take Off



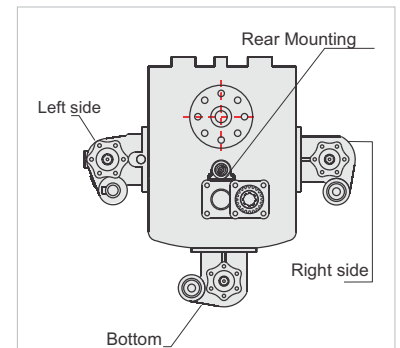
## GENERAL DATA

P.T.O. CODE	ZF1	
Torque	48,9 Kgm	479,5 Nm
Power	34,5 Hp	25,7 Kw
Speed	513 rpm	513 rpm
Ratio	1/1	1/1
Weight	7 kg	15,4 lb
Mounting	Kuyruk	Rear
Control	Havalı	Pneumatic
P.T.O. Rotation	Sağ - ISO	Right - ISO

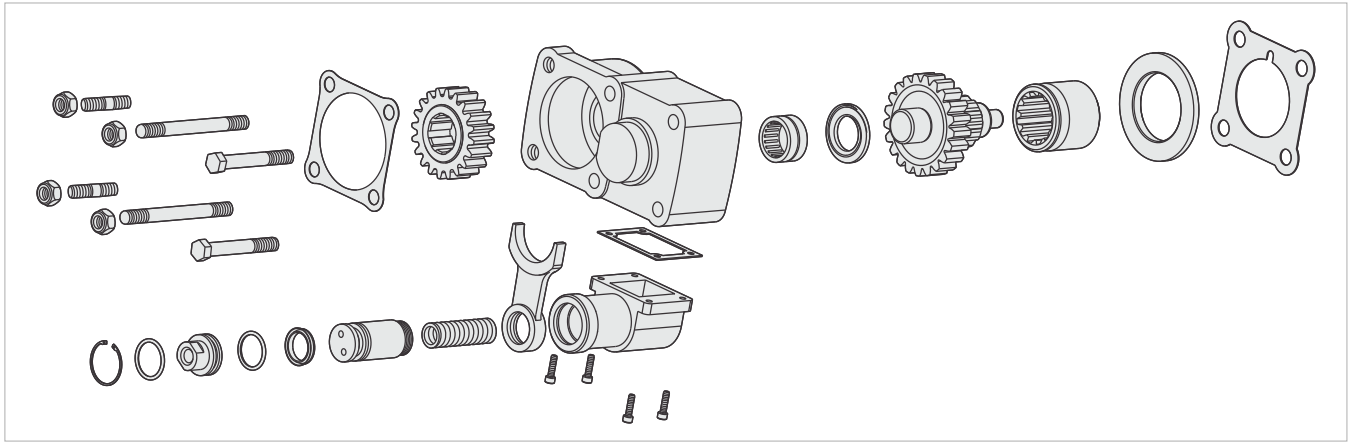
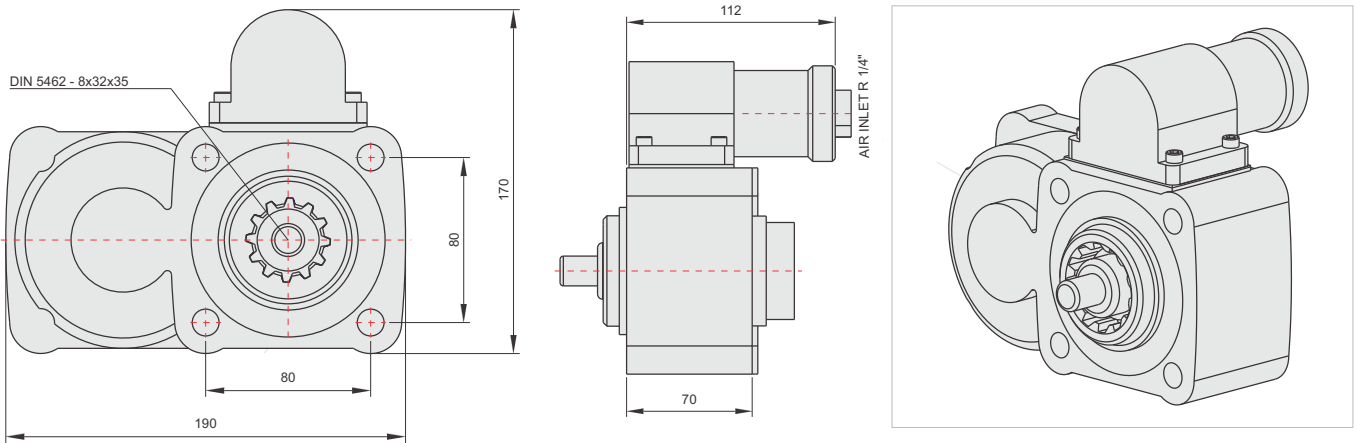
Gearbox	Used Vehicles
ZF16S251-221-151-150-130- ZF S5/AK/65-120-111-110-92- GP ZF S5/AK/6S-90-80-70-66- 65-55-50-42-36-35-ZF-ECOMIT 9S75-9S109-16S109 ZF NEW ECOSPLIT 16S1620TD- 16S1820TO-18S1820TO- 16S2220TD-16S220TO- 16S2520TO- 16S2023TDL	MAN / MERCEDES / BMC PROFESYONEL / FORD CARGO / CHRYSLER HINO / DODGE / FARGO / IVECO / DAF/ DAEWOO / RENAULT

The rotation of the chosen pump has to be opposite with the rotation of P.T.O.

Fill the oil of the gear box after mounting the P.T.O.



# ZF2 Power Take Off



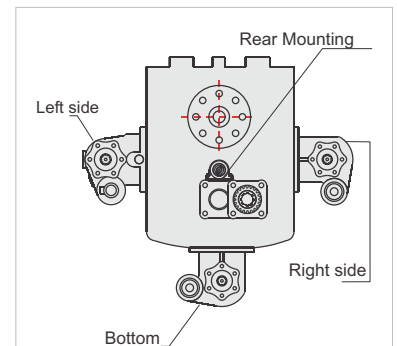
## GENERAL DATA

P.T.O. CODE	ZF2	
Torque	26,5 Kgm	260 Nm
Power	24,5 Hp	18,3 Kw
Speed	675 rpm	675 rpm
Ratio	1/1,2	1/1,2
Weight	11 kg	24,4 lb
Mounting	Kuyruk	Rear
Control	Havali	Pneumatic
P.T.O. Rotation	Sol - ISO	Left - ISO

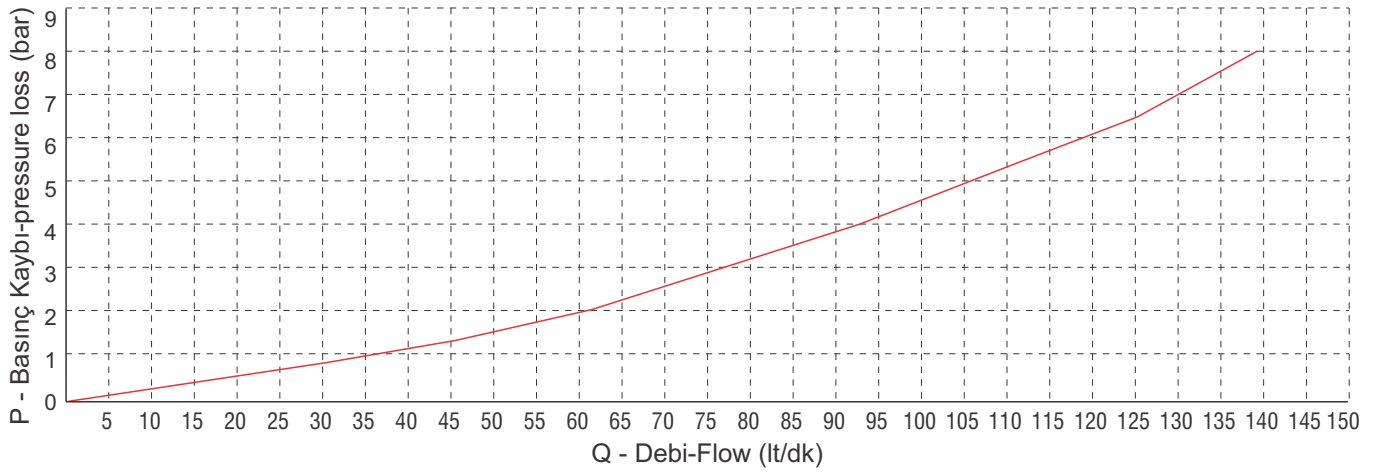
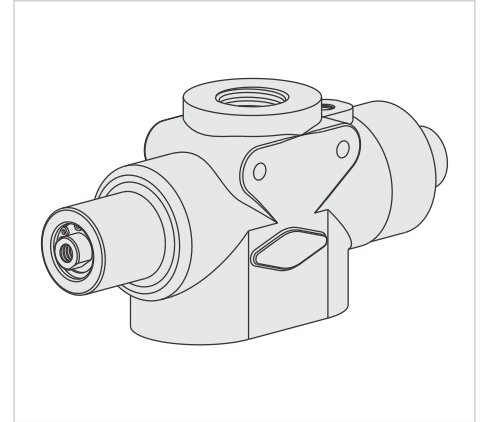
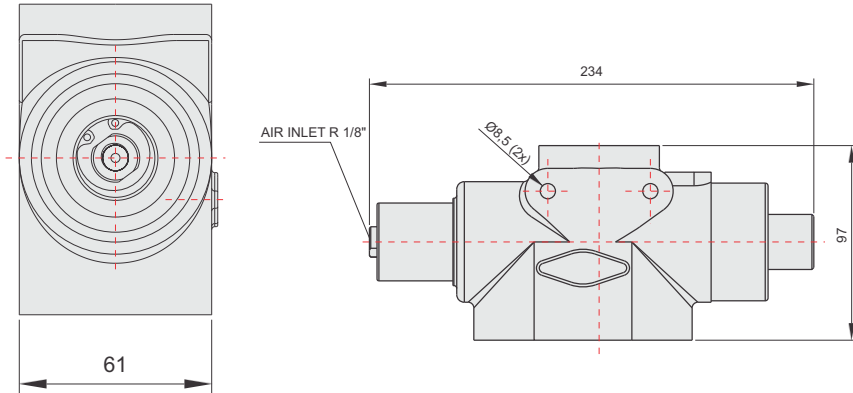
The rotation of the chosen pump has to be opposite with the rotation of P.T.O.

Gearbox	Used Vehicles
ZF16S251-221-151-150-130- ZF S5/AK/65-120-111-110-92- GP ZF S5/AK/6S-90-80-70-66- 65-55-50-42-36-35-ZF-ECOMIT 9S75-9S109-16S109 ZF NEW ECOSPLIT 16S1620TD- 16S1820TO-18S1820TO- 16S2220TD-16S220TO- 16S2520TO- 16S2023TDL	MAN / MERCEDES / BMC PROFESYONEL / FORD CARGO / CHRYSLER HINO / DODGE / FARGO / IVECO /DAF/ DAEWOO / RENAULT

Fill the oil of the gear box after mounting the P.T.O.

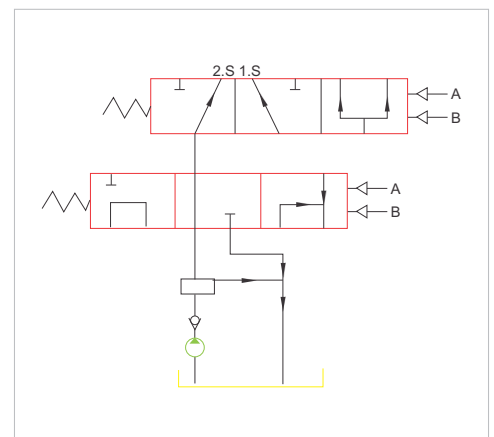


# Trailer Directional Valve

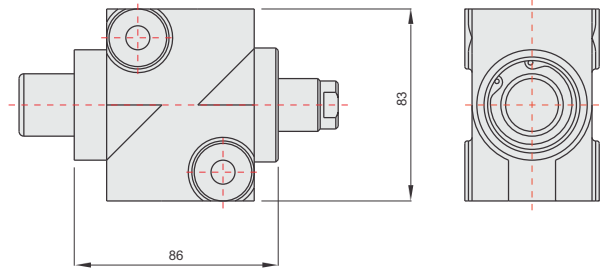
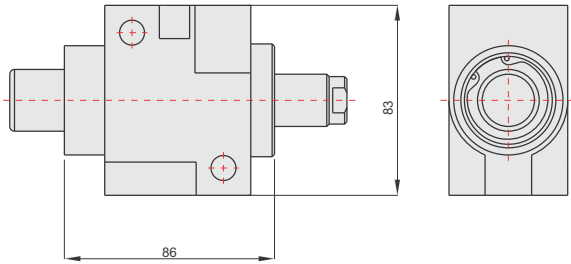
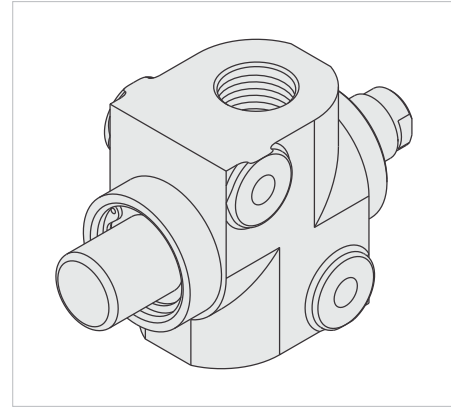
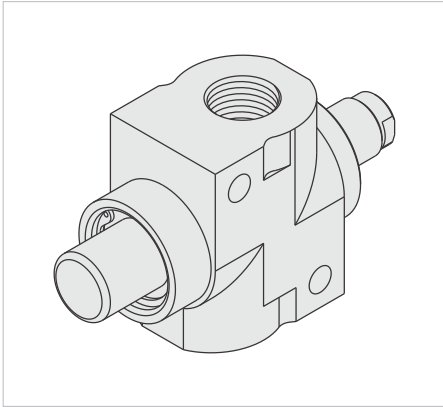


## GENERAL DATA

VALVE CODE	1" Straight Fitting
Flow Rate	140 lt/dk
Max. Press.	190 bar
Weight(kg)	7,5 kg
Max. Pneumatic Press.	12 bar
Fluid	Mineral based hydraulic oil



# Limit Control Valve (Open-Closed Loop)

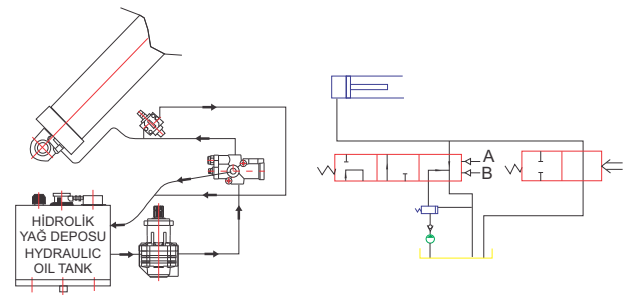
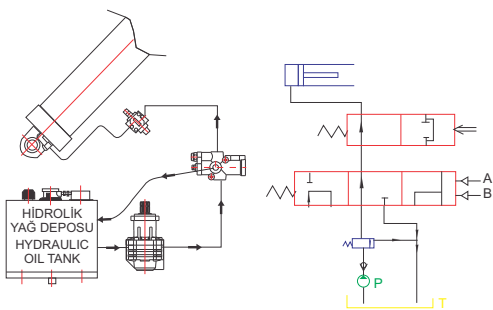


## GENERAL DATA

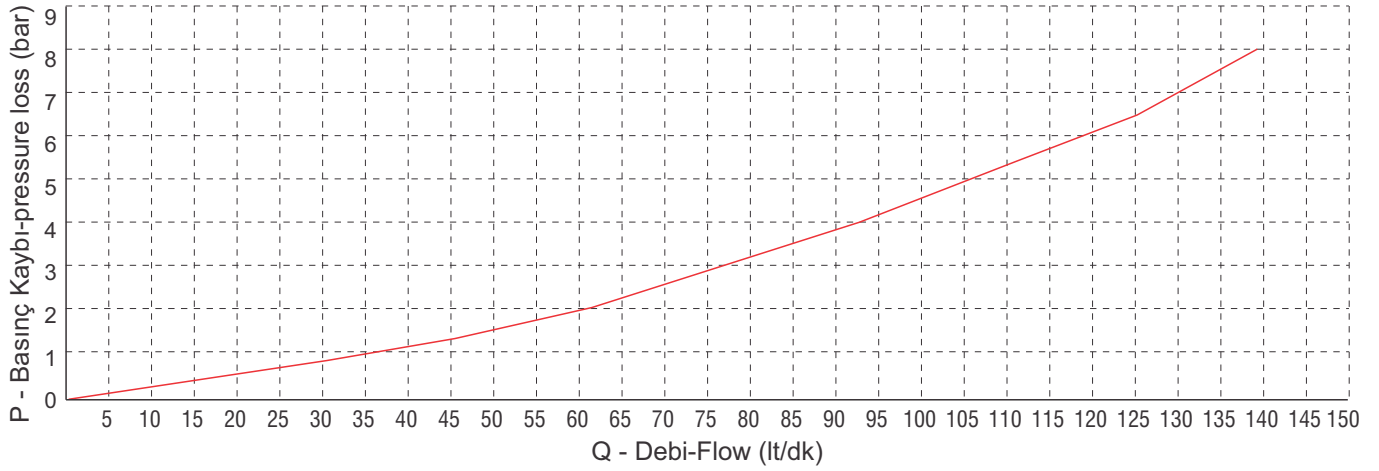
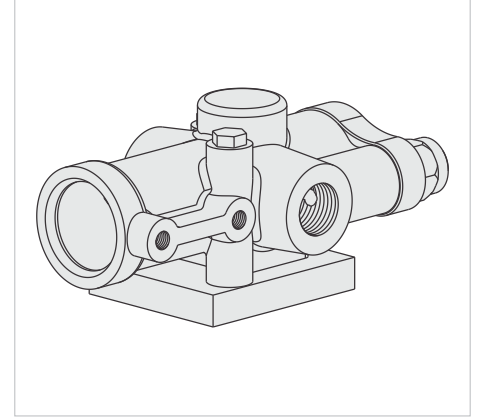
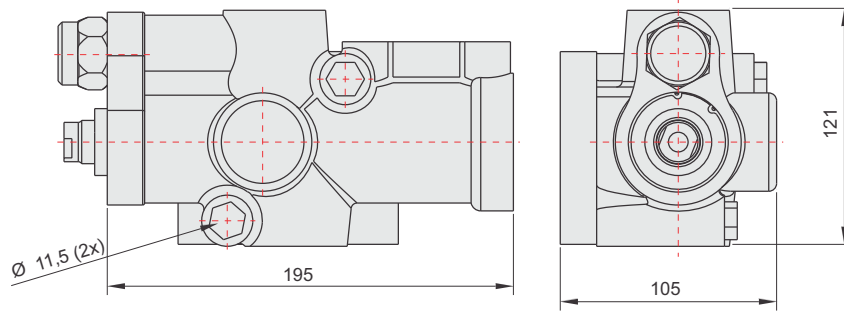
VALVE CODE	3/4" Fittings	1" Fittings
Flow Rate	110 lt/dk	140 lt/dk
Max. Press.	190 bar	190 bar
Weight(kg)	1,9 kg	1,9 kg
Fluid	Mineral based hydraulic oil	

## GENERAL DATA

VALVE CODE	3/4" Fittings	1" Fittings
Flow Rate	110 lt/dk	140 lt/dk
Max. Press.	190 bar	190 bar
Weight(kg)	1,9 kg	1,9 kg
Fluid	Mineral based hydraulic oil	

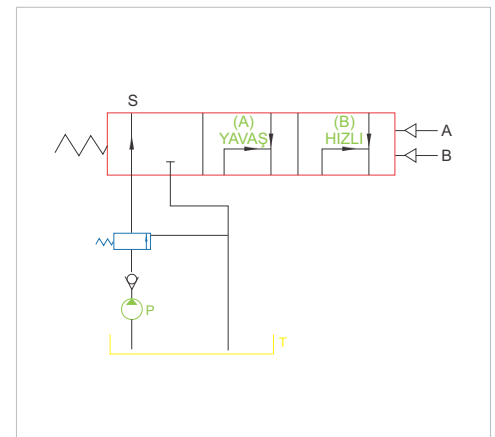


# Directional Tank Valve

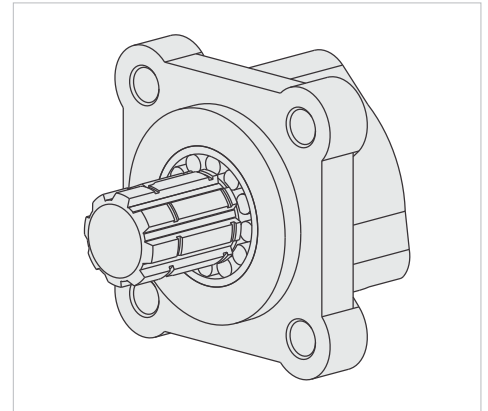


## GENEL BİLGİLER/GENERAL DATA

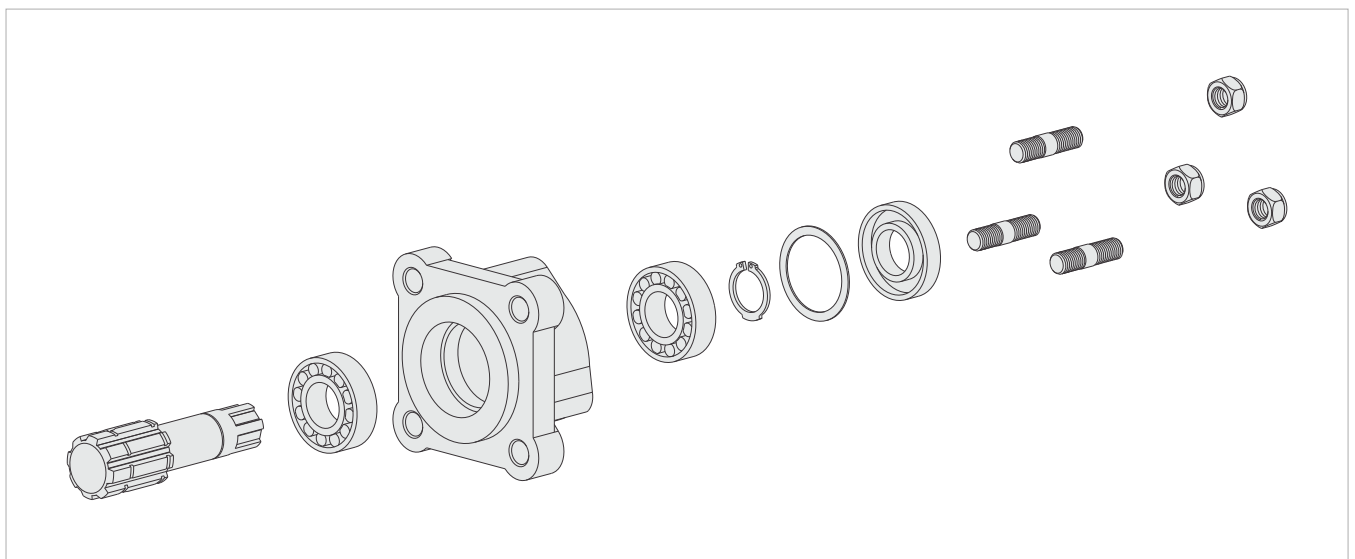
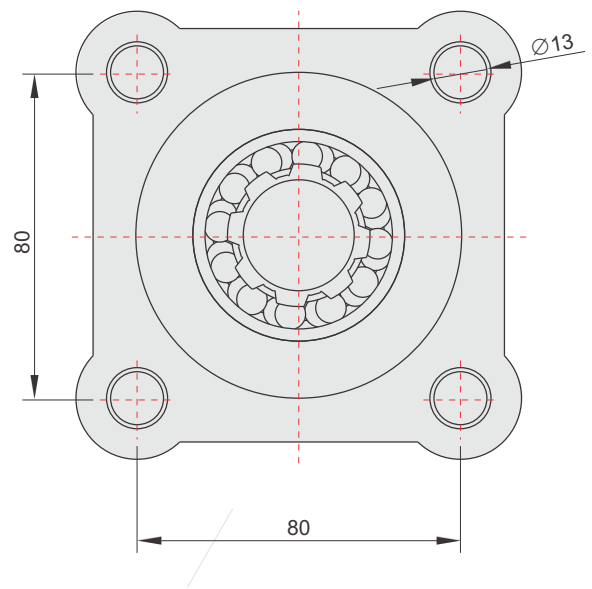
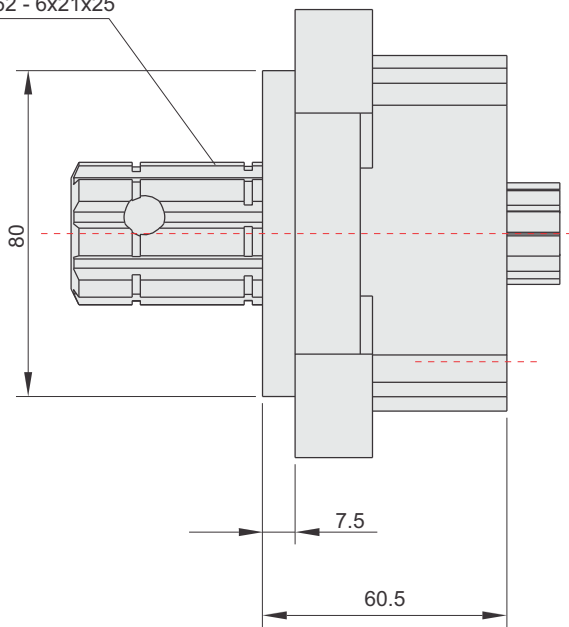
VALVE CODE	3/4"Fitting	1" Straight Fitting	1" Reverse Fitting
Flow Rate	110 lt/dk	140 lt/dk	140 lt/dk
Max. Press.	190 bar	190 bar	190 bar
Working Press.	170 bar	170 bar	170 bar
Weight(kg)	7,5 kg	7,5 kg	7,5 kg
Max. Pneumatic Press.	12 bar	12 bar	12 bar
Fluid	Mineral based hydraulic oil		



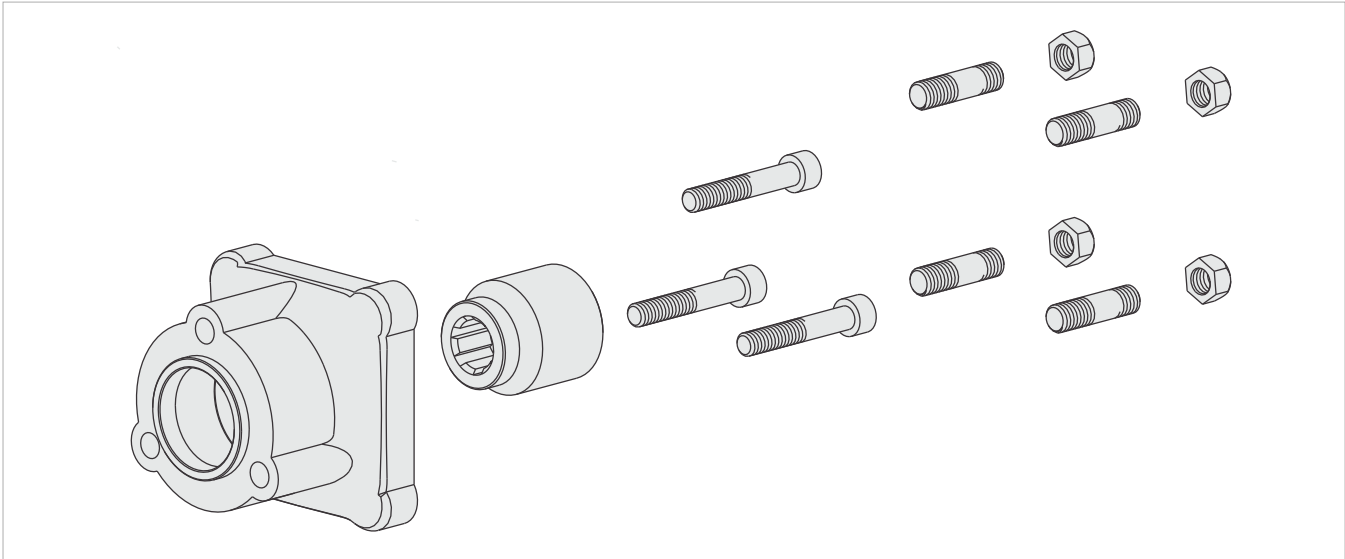
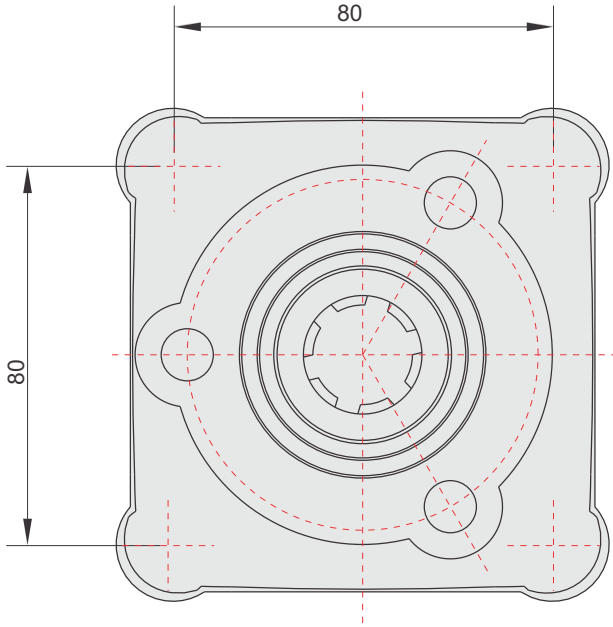
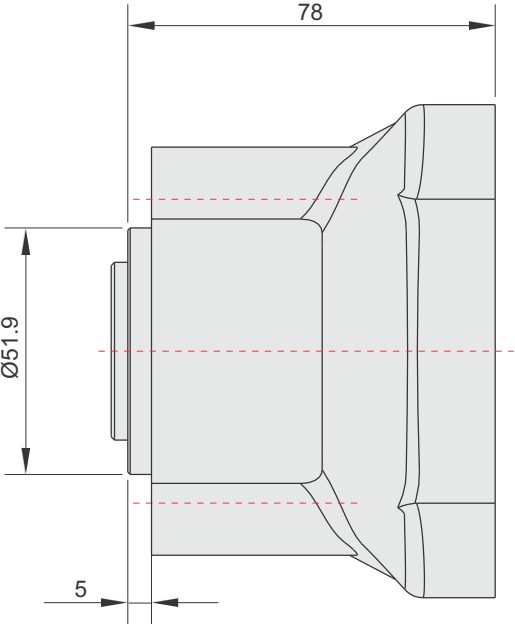
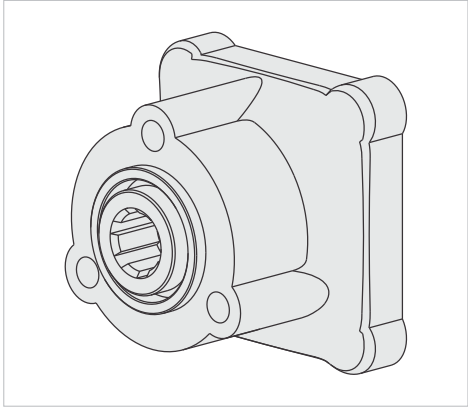
# ISO Adapter 4x3



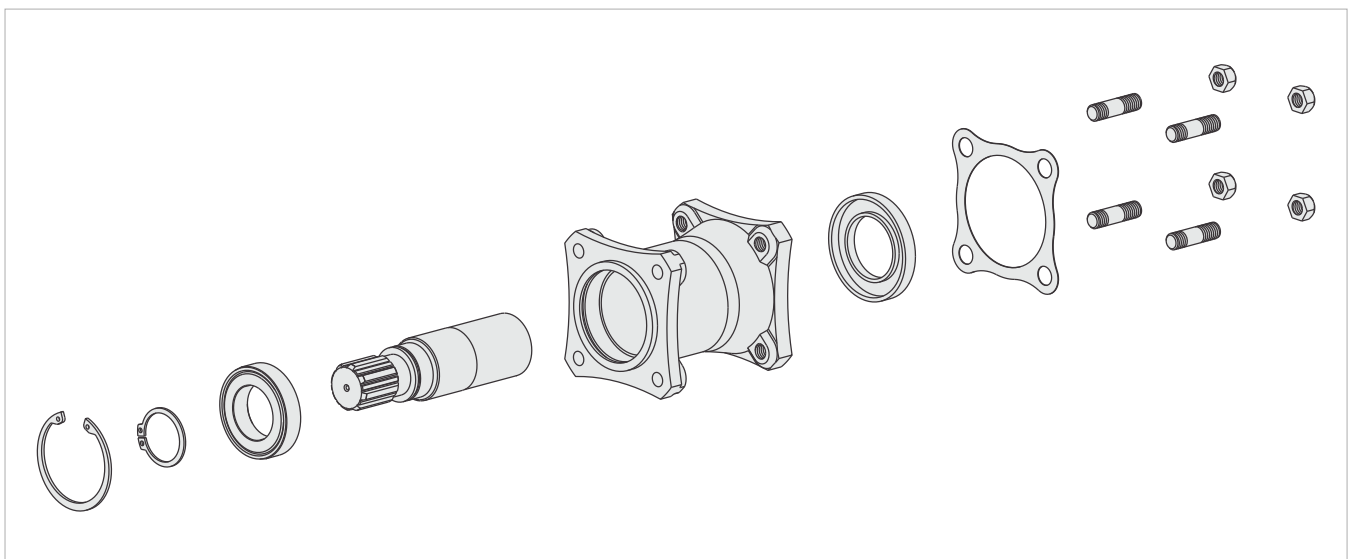
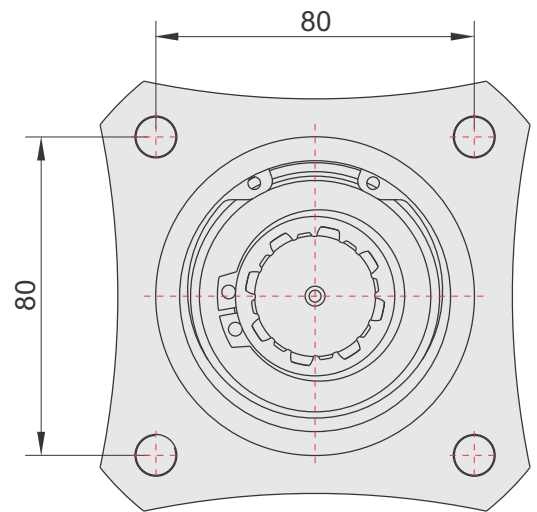
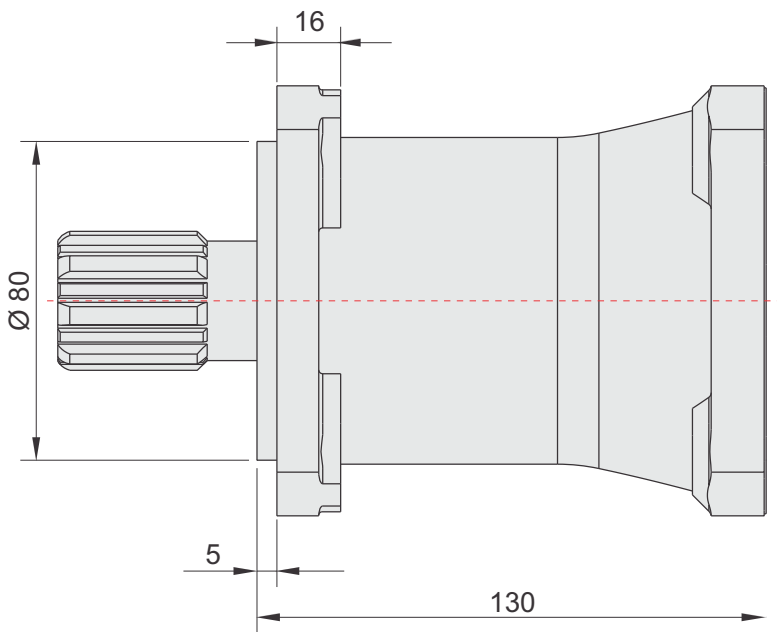
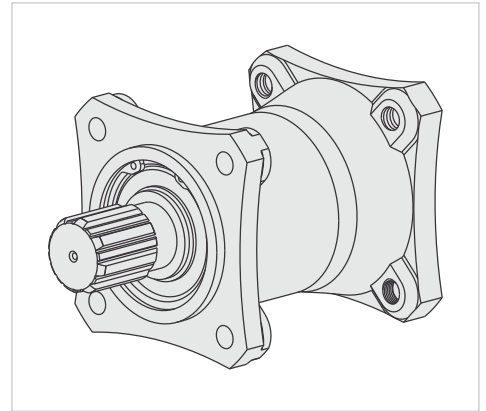
DIN 5462 - 6x21x25



# UNI Adapter 3x4



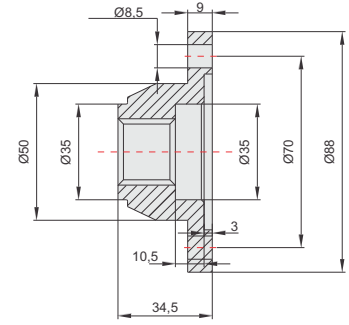
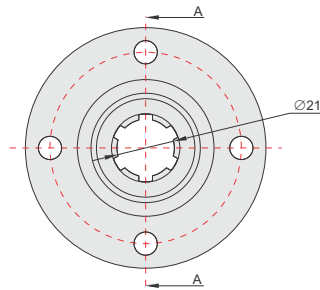
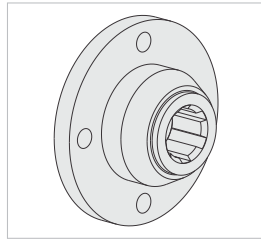
# ISO Adapter 4x4





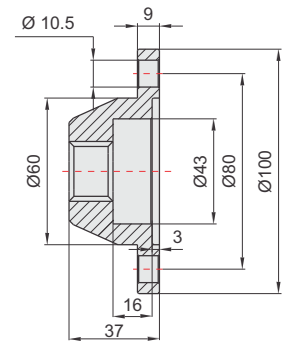
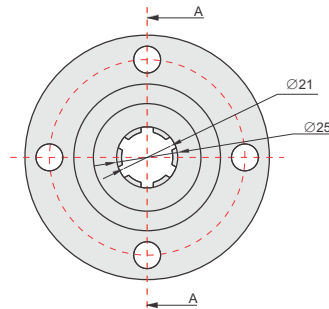
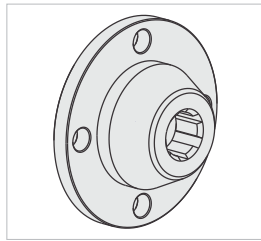
# Flange

1300 Flange  
6 Spline



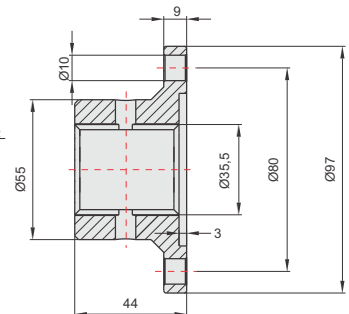
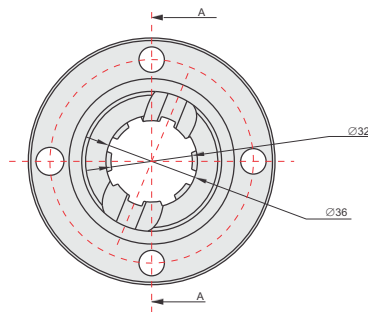
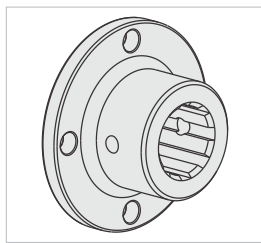
A-A Kesiti / A-A Section

1120 Flange  
6 Spline



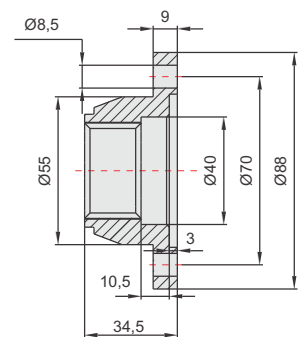
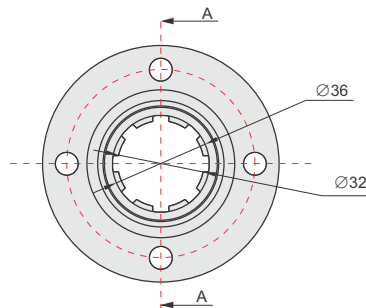
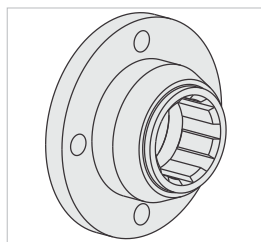
A-A Kesiti / A-A Section

1300 Flange  
8 Spline



A-A Kesiti / A-A Section

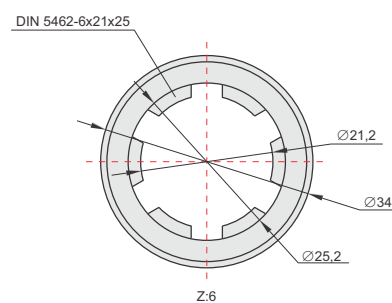
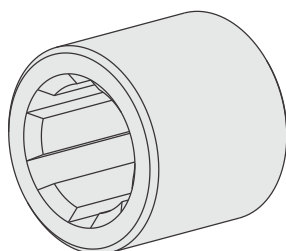
1120 Flange  
8 Spline



A-A Kesiti / A-A Section

# Couplar

## 6x6 Couplar



## 6x8 Couplar

