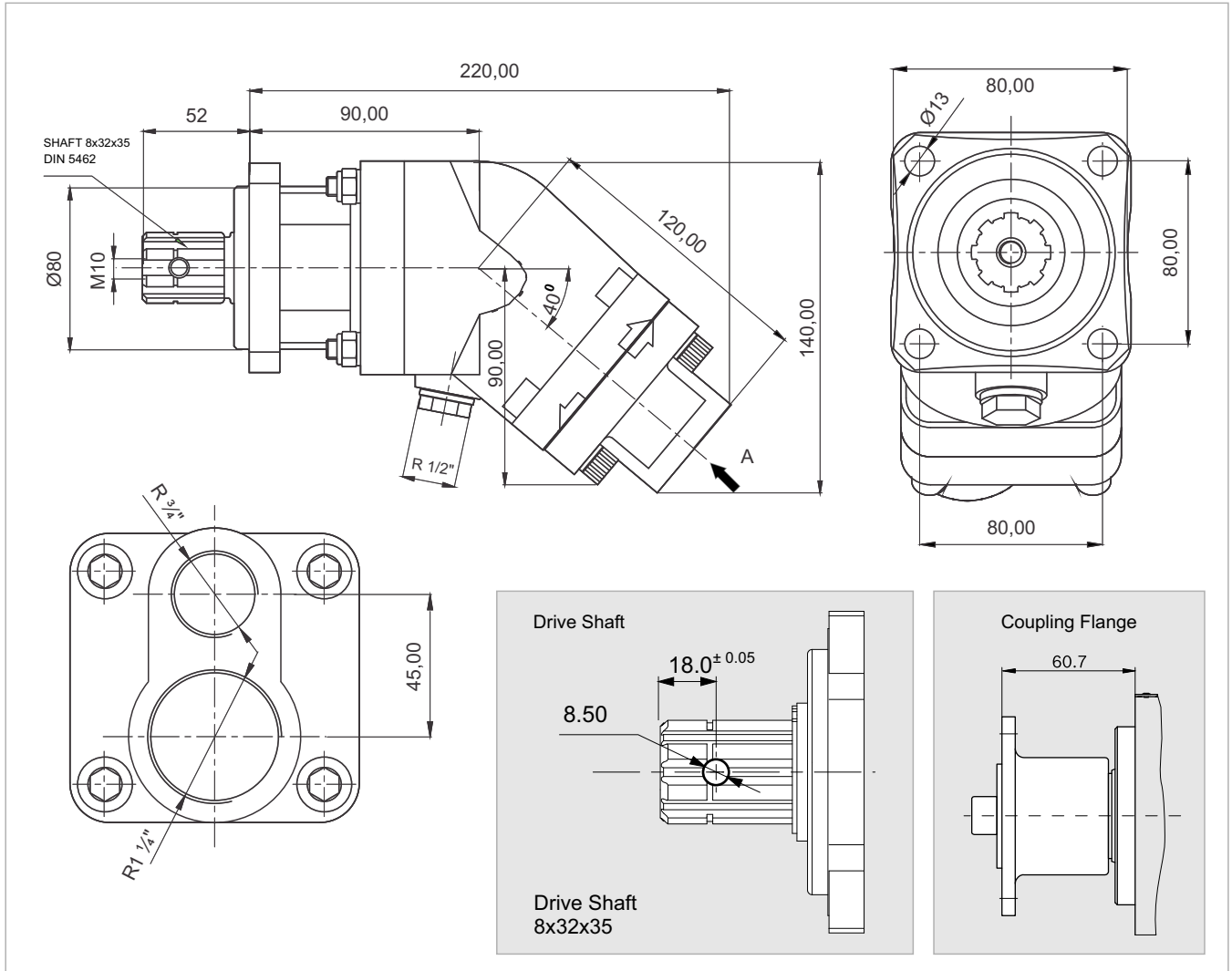
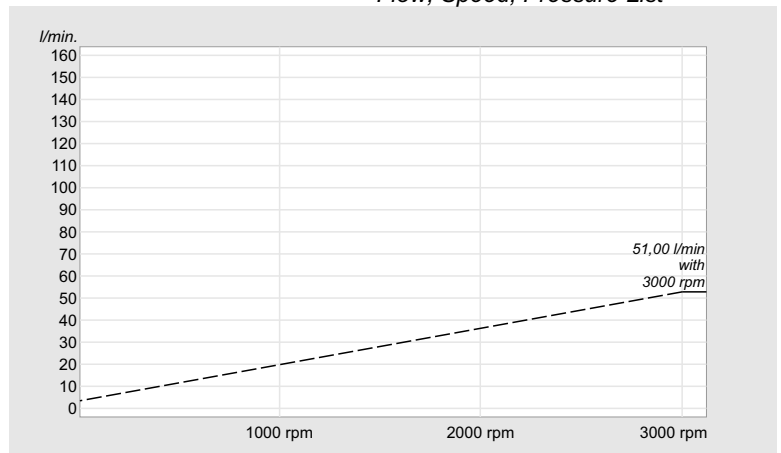


17 cc

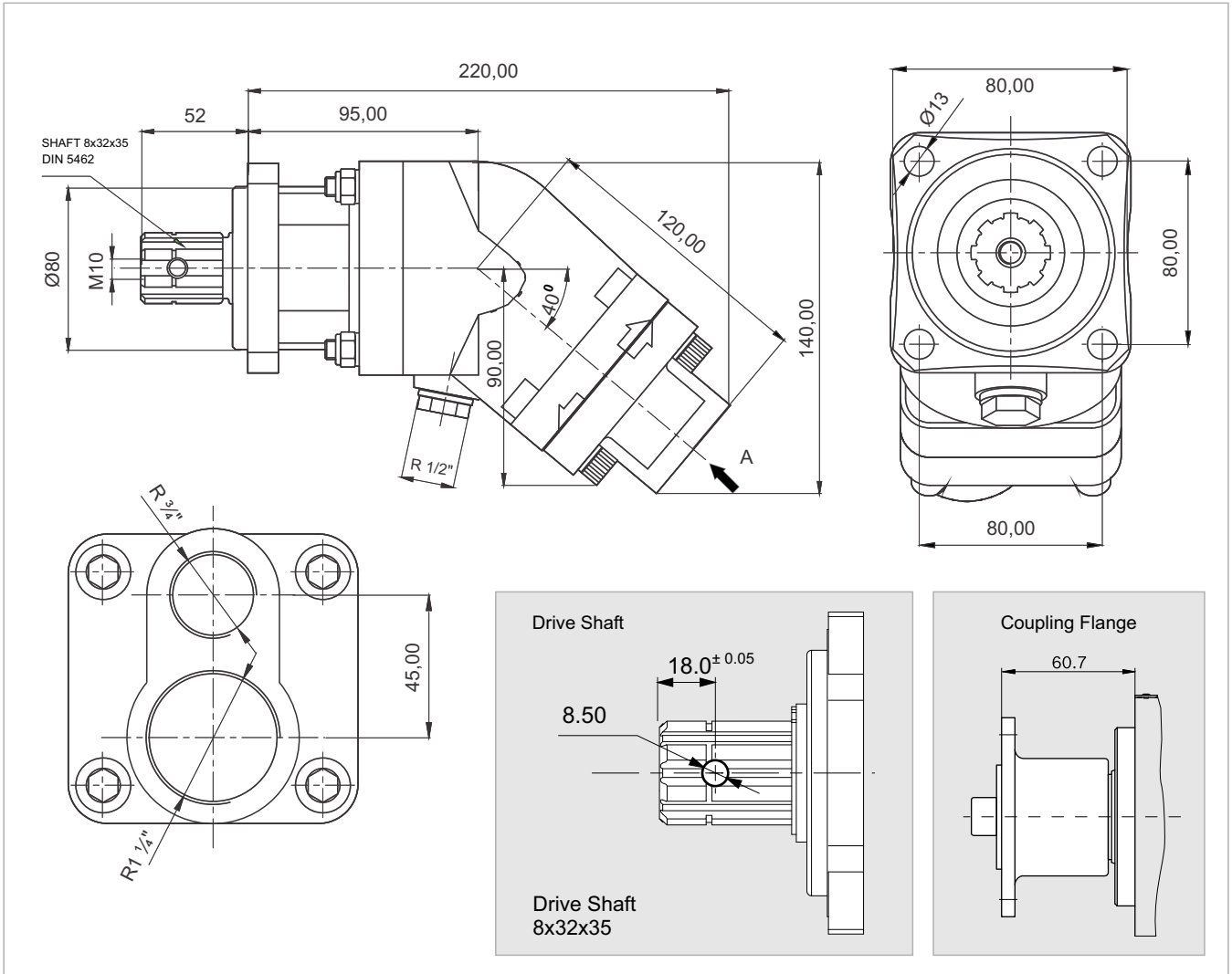


x 1000 rpm	17,00 cc
x 1500 rpm	25,50 cc
Max. Continuous Pump Speed	2300 rpm
Max. Limited Pump Speed	3000 rpm
Max. Continuous Pressure	350 bar
Max. Intermit. Peak Pressure	400 bar
Weight without inlet fitting	8,00 kg
Weight with inlet fitting	8,35 kg
Rotation	CW-CCW
Fluid	Min.B.Hyd.Oil
Inlet	R1 1/4"
Outlet	R 3/4"

Flow, Speed, Pressure List

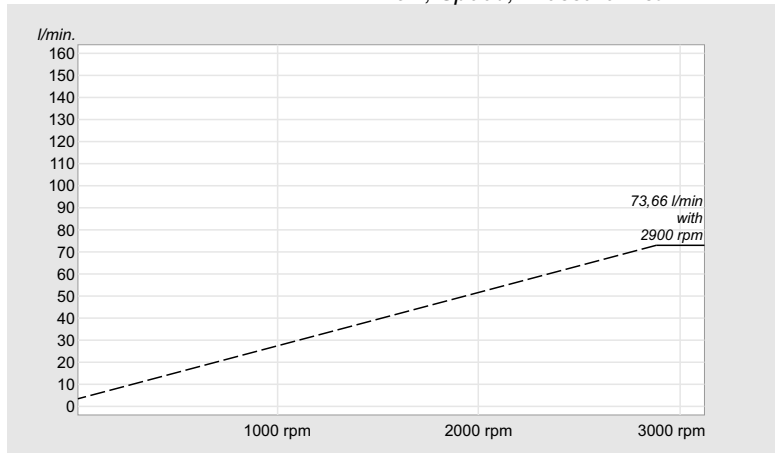


25 cc

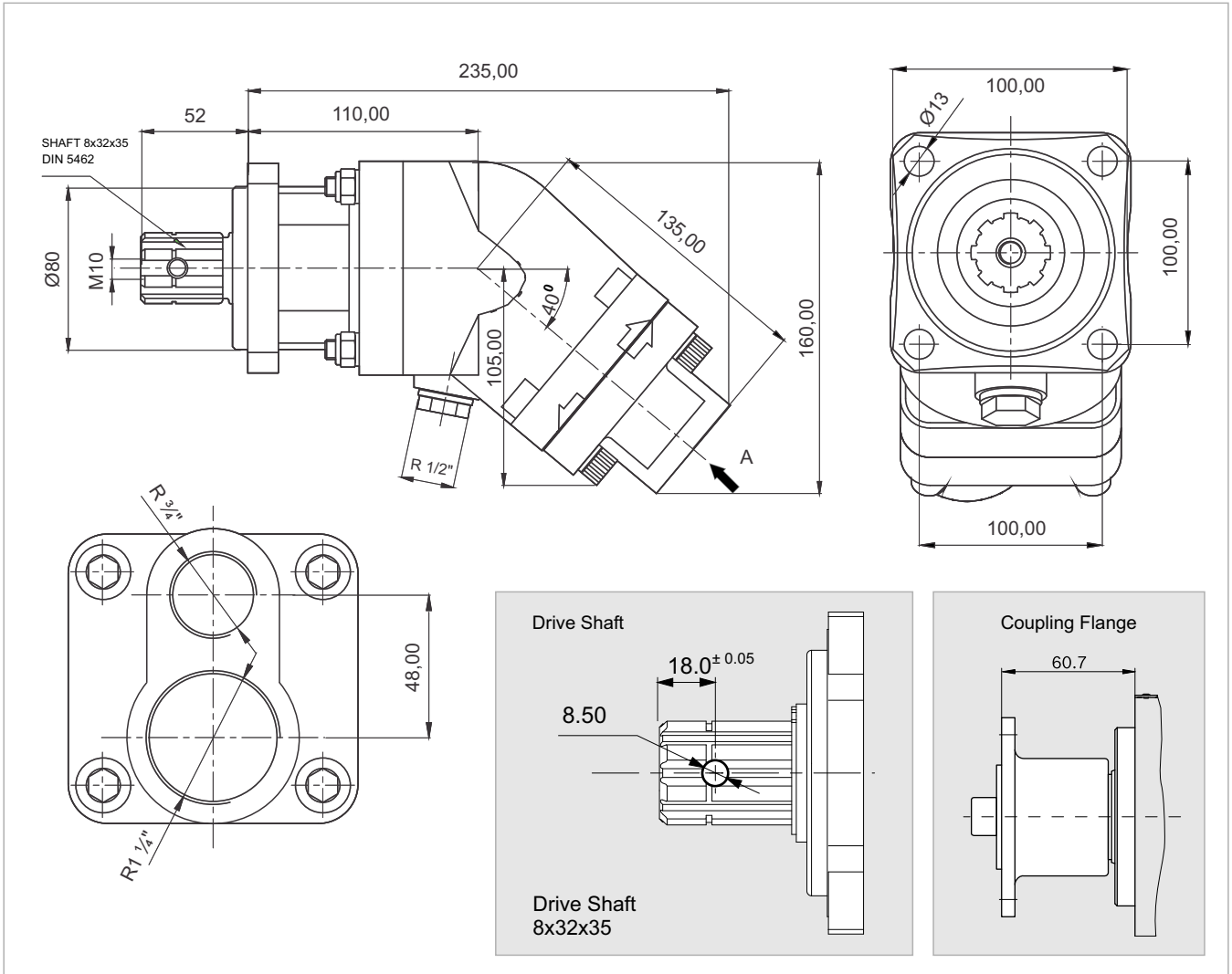


x 1000 rpm	25,40 cc
x 1500 rpm	38,10 cc
Max. Continuous Pump Speed	2300 rpm
Max. Limited Pump Speed	2900 rpm
Max. Continuous Pressure	350 bar
Max. Intermit. Peak Pressure	400 bar
Weight without inlet fitting	9,00 kg
Weight with inlet fitting	9,35 kg
Rotation	CW-CCW
Fluid	Min.B.Hyd.Oil
Inlet	R1 1/4"
Outlet	R 3/4"

Flow, Speed, Pressure List

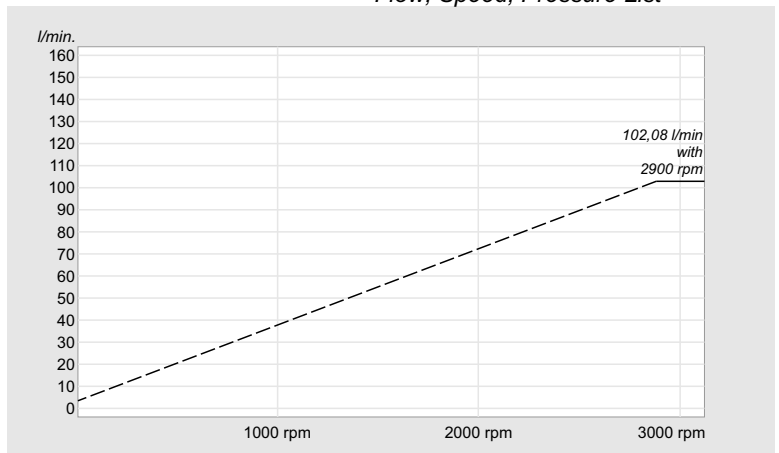


35 cc

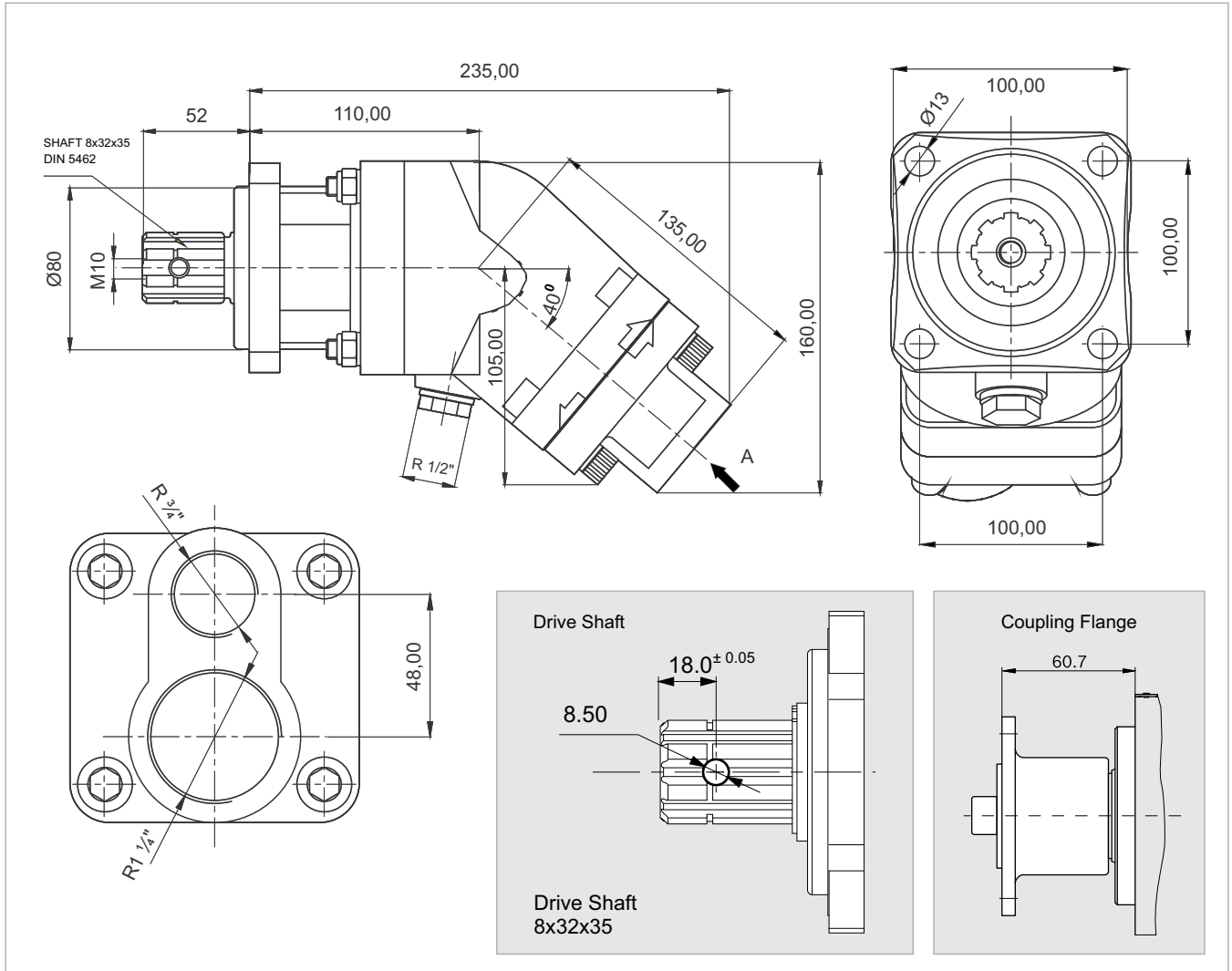


x 1000 rpm	35,20 cc
x 1500 rpm	52,80 cc
Max. Continuous Pump Speed	2300 rpm
Max. Limited Pump Speed	2900 rpm
Max. Continuous Pressure	350 bar
Max. Intermit. Peak Pressure	400 bar
Weight without inlet fitting	13,00 kg
Weight with inlet fitting	13,40 kg
Rotation	CW-CCW
Fluid	Min.B.Hyd.Oil
Inlet	R1 1/4"
Outlet	R 3/4"

Flow, Speed, Pressure List

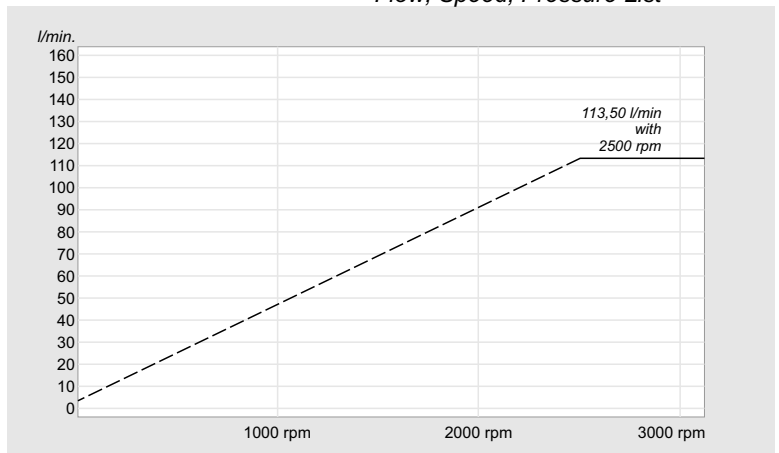


45 cc

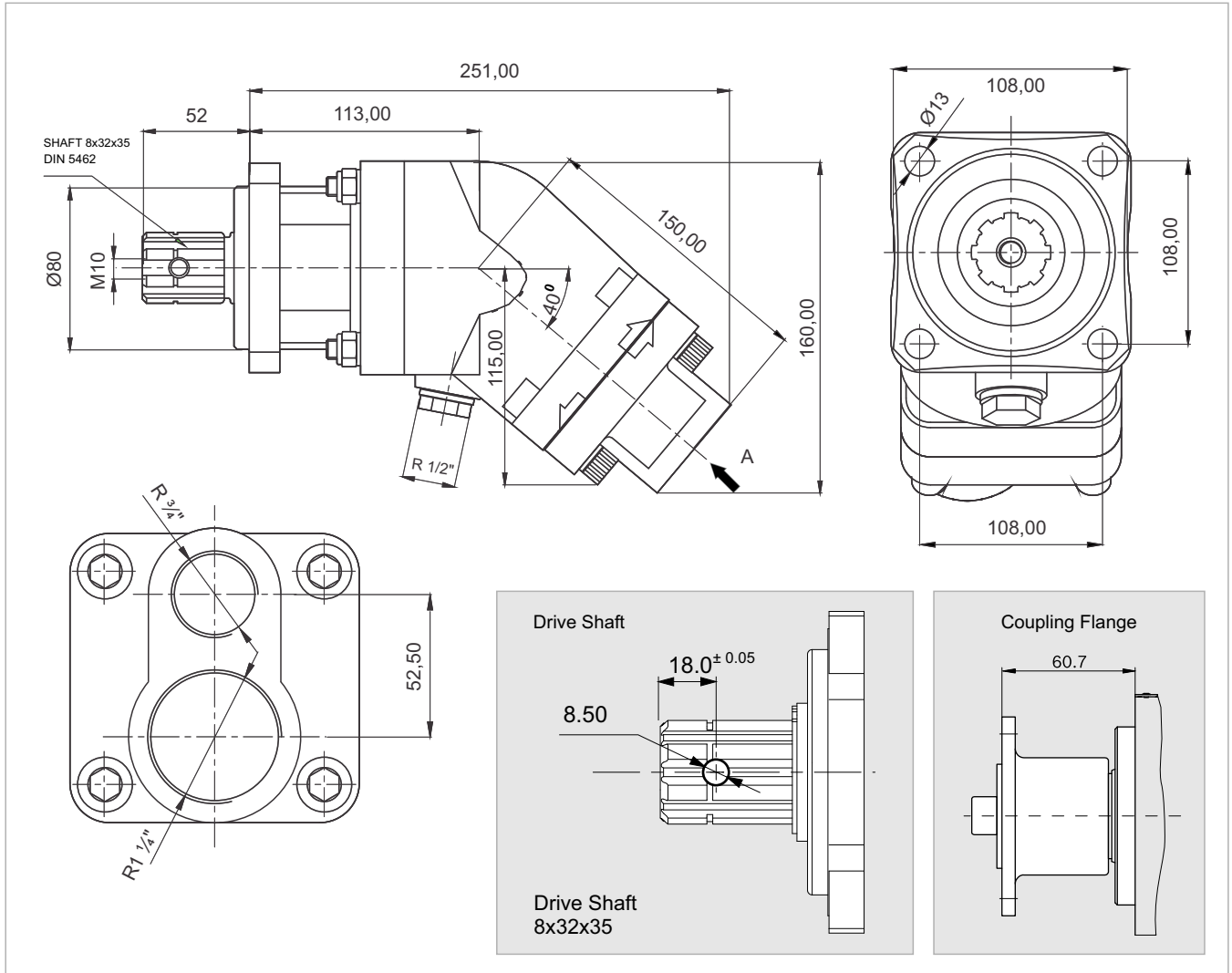


x 1000 rpm	45,40 cc
x 1500 rpm	68,10 cc
Max. Continuous Pump Speed	2000 rpm
Max. Limited Pump Speed	2500 rpm
Max. Continuous Pressure	350 bar
Max. Intermit. Peak Pressure	400 bar
Weight without inlet fitting	14,00 kg
Weight with inlet fitting	14,40 kg
Rotation	CW-CCW
Fluid	Min.B.Hyd.Oil
Inlet	R1 1/4"
Outlet	R 3/4"

Flow, Speed, Pressure List

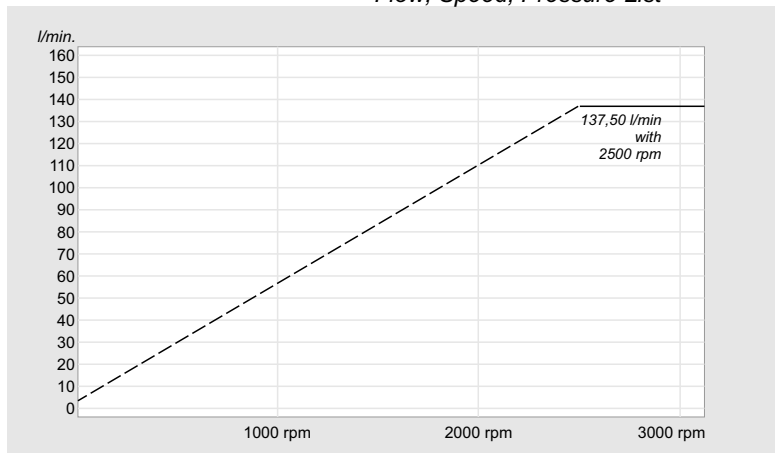


55 cc

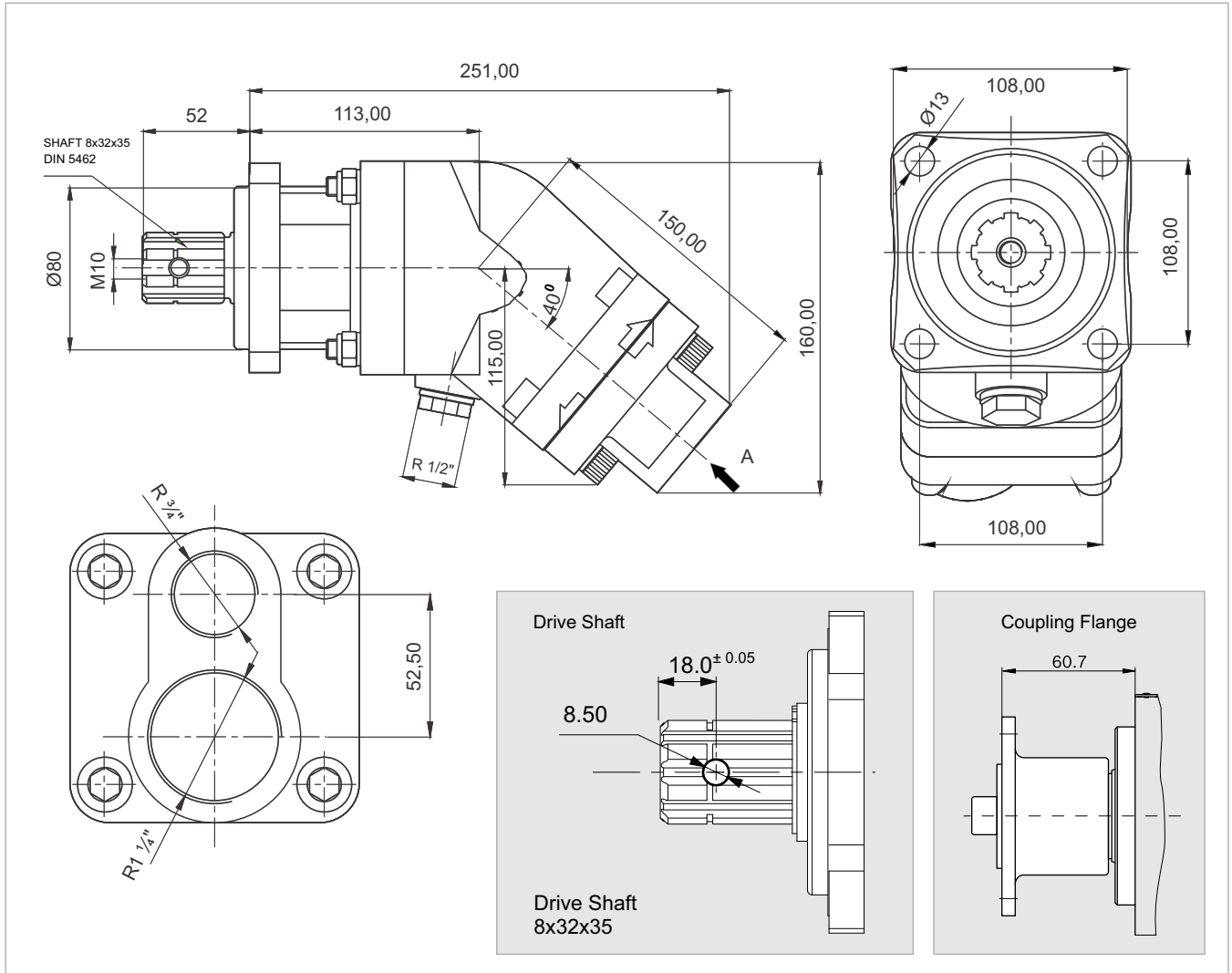


x 1000 rpm	55,00 cc
x 1500 rpm	82,50 cc
Max. Continuous Pump Speed	1900 rpm
Max. Limited Pump Speed	2500 rpm
Max. Continuous Pressure	350 bar
Max. Intermit. Peak Pressure	400 bar
Weight without inlet fitting	15,00 kg
Weight with inlet fitting	15,40 kg
Rotation	CW-CCW
Fluid	Min.B.Hyd.Oil
Inlet	R1 1/4"
Outlet	R 3/4"

Flow, Speed, Pressure List

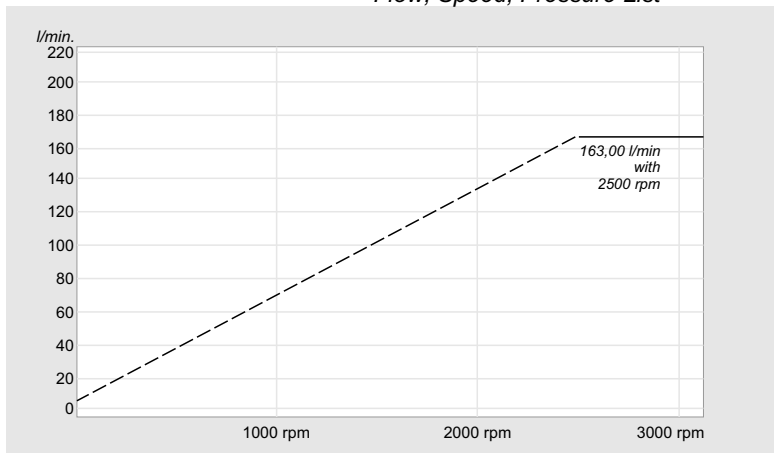


65 cc

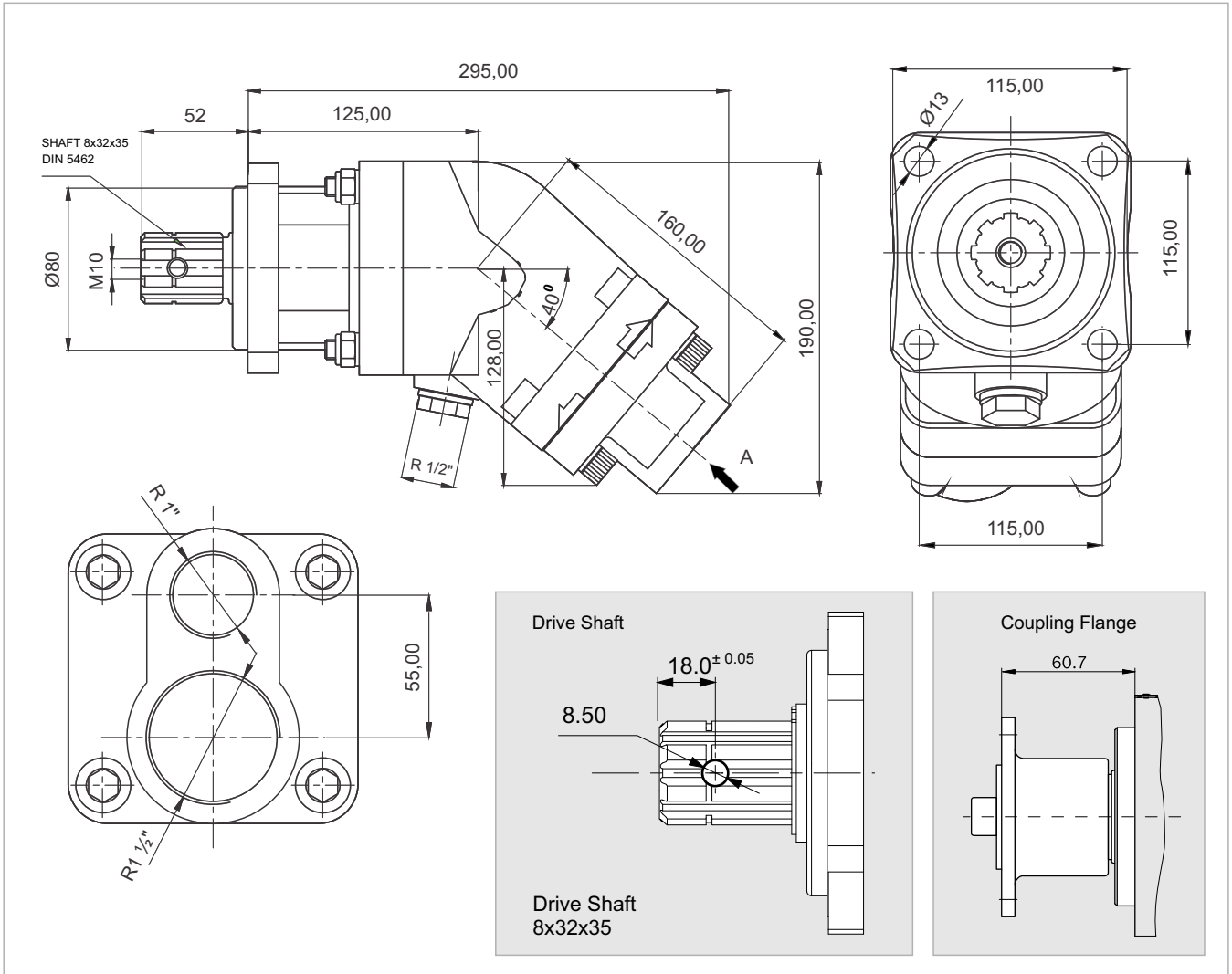


x 1000 rpm	65,20 cc
x 1500 rpm	97,80 cc
Max. Continuous Pump Speed	1900 rpm
Max. Limited Pump Speed	2500 rpm
Max. Continuous Pressure	350 bar
Max. Intermit. Peak Pressure	400 bar
Weight without inlet fitting	15,00 kg
Weight with inlet fitting	15,40 kg
Rotation	CW-CCW
Fluid	Min.B.Hyd.Oil
Inlet	R1 1/4"
Outlet	R 3/4"

Flow, Speed, Pressure List

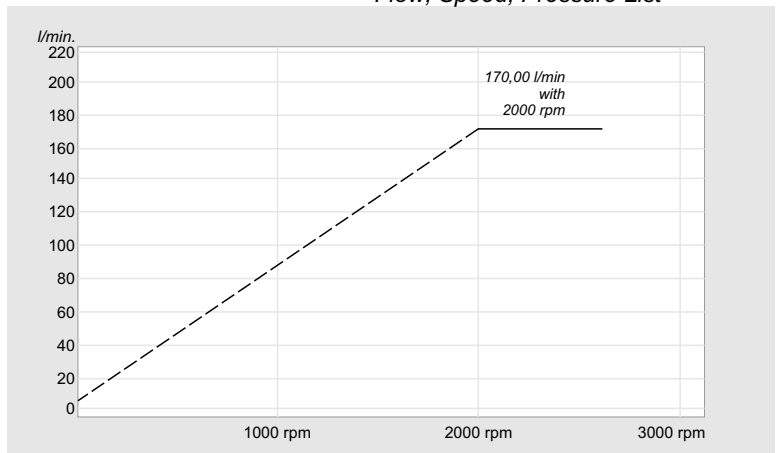


85 cc

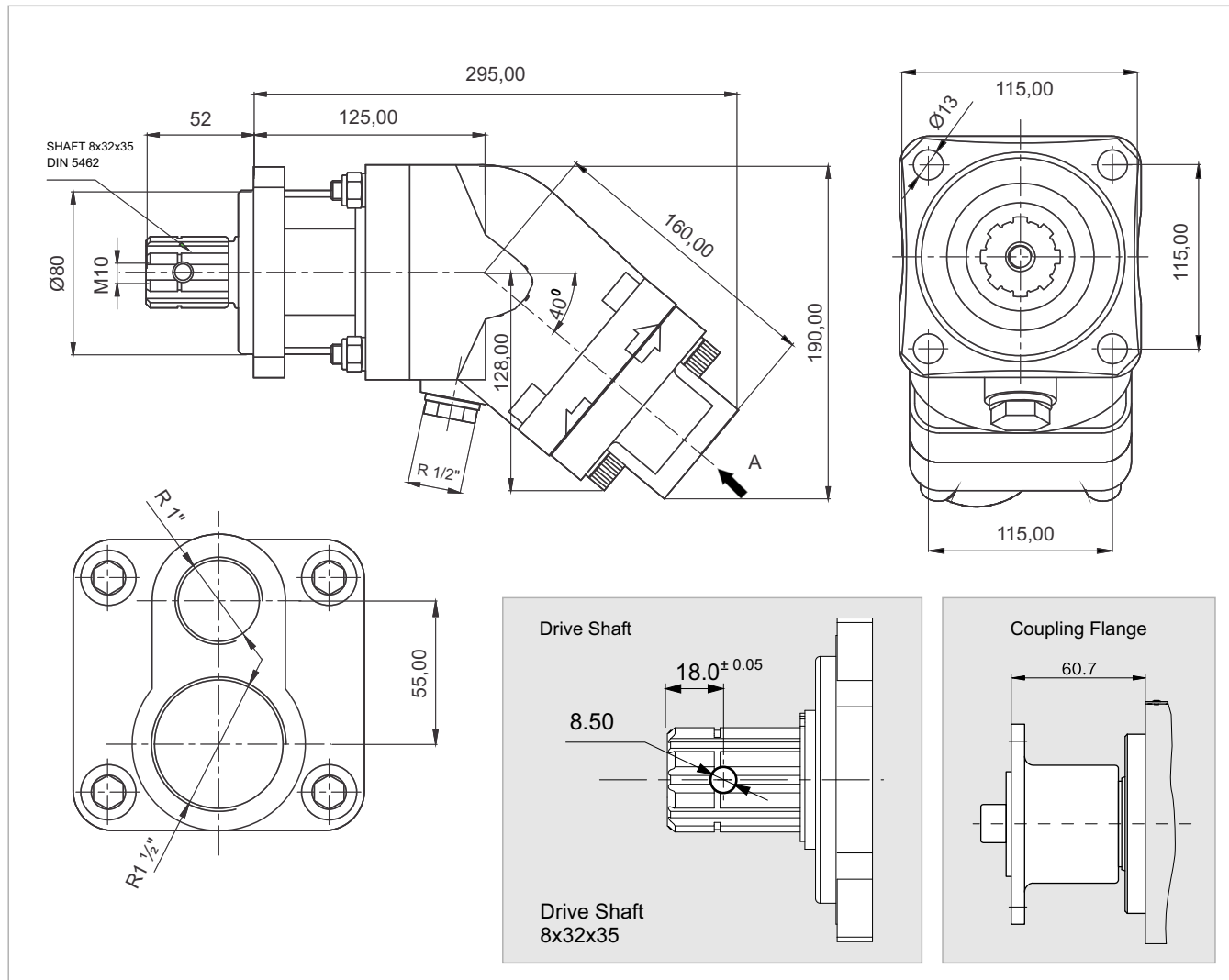


x 1000 rpm	85,00 cc
x 1500 rpm	127,50 cc
Max. Continuous Pump Speed	1500 rpm
Max. Limited Pump Speed	2000 rpm
Max. Continuous Pressure	350 bar
Max. Intermit. Peak Pressure	400 bar
Weight without inlet fitting	17,50 kg
Weight with inlet fitting	17,90 kg
Rotation	CW-CCW
Fluid	Min.B.Hyd.Oil
Inlet	R1 1/2"
Outlet	R 1"

Flow, Speed, Pressure List



105 cc



x 1000 rpm	105,40 cc
x 1500 rpm	158,10 cc
Max. Continuous Pump Speed	1500 rpm
Max. Limited Pump Speed	2000 rpm
Max. Continuous Pressure	350 bar
Max. Intermit. Peak Pressure	400 bar
Weight without inlet fitting	18,00 kg
Weight with inlet fitting	18,50 kg
Rotation	CW-CCW
Fluid	Min.B.Hyd.Oil
Inlet	R 1 1/2"
Outlet	R 1"

Flow, Speed, Pressure List

