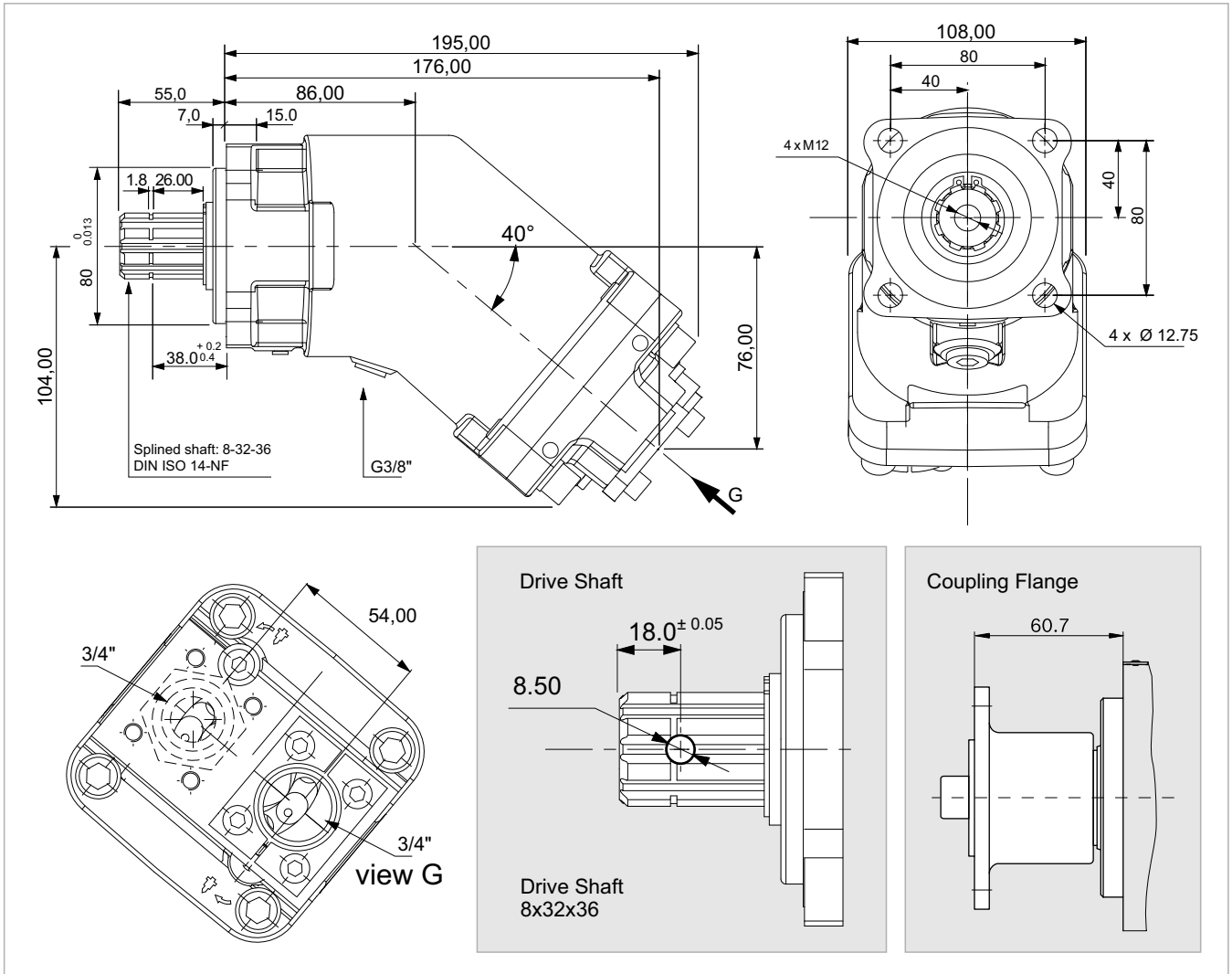
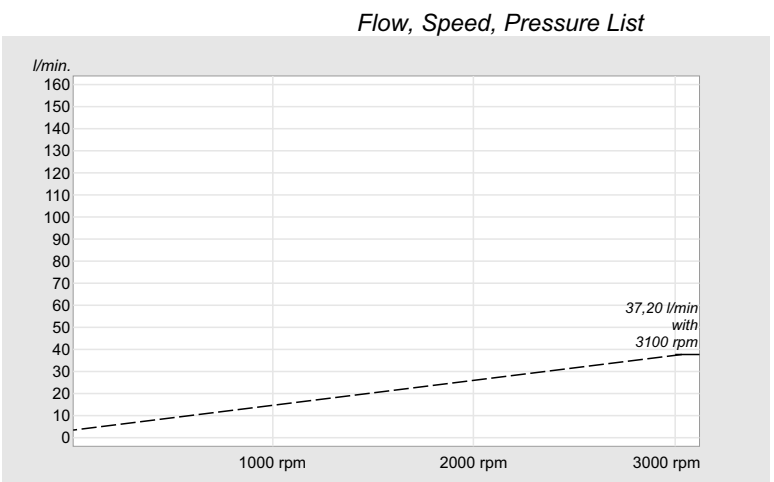


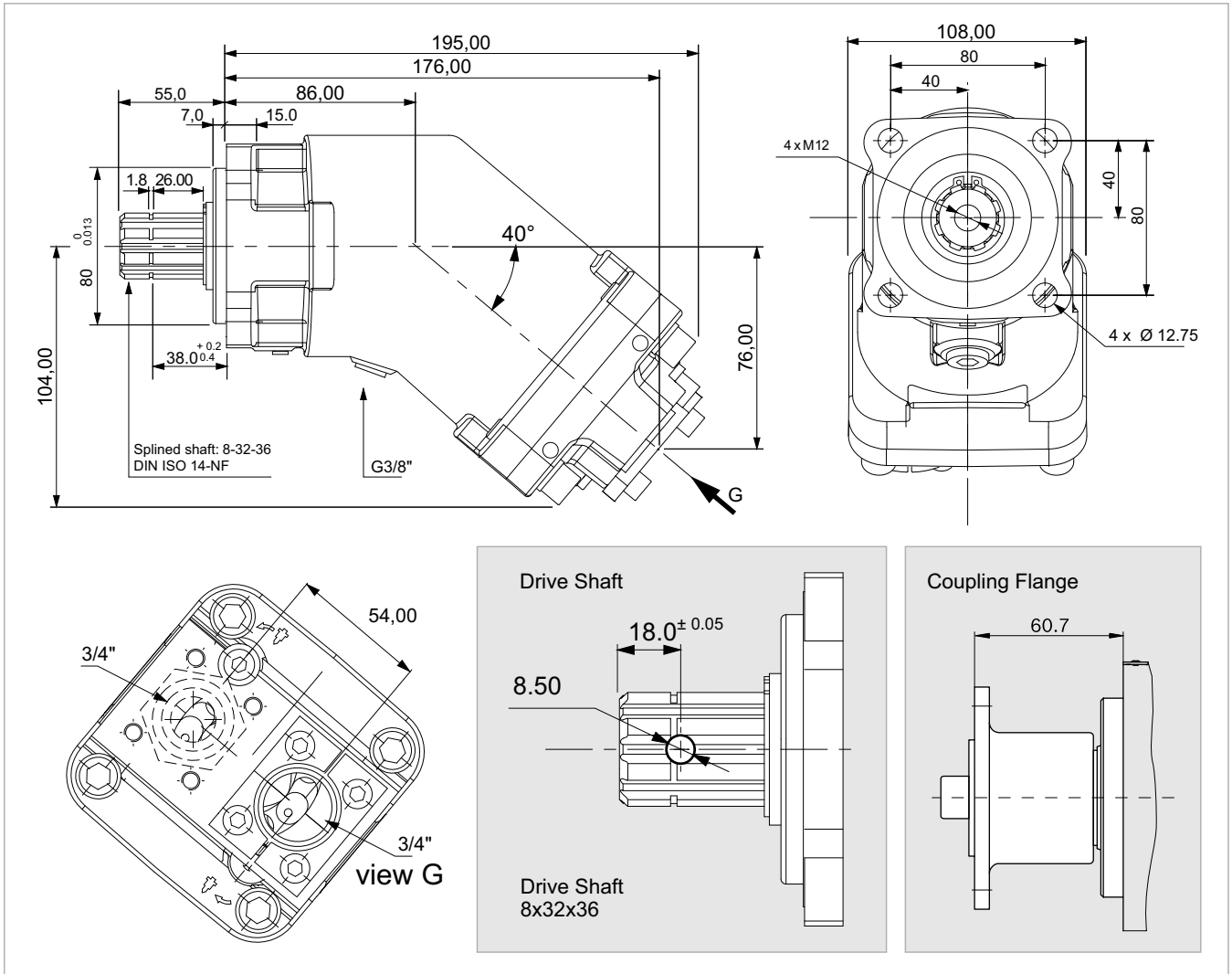
12 cc



| | |
|-------------------------------------|---------------|
| x 1000 rpm | 12,00 cc |
| x 1500 rpm | 18,00 cc |
| Max. Continuous Pump Speed | 2300 rpm |
| Max. Limited Pump Speed | 3100 rpm |
| Max. Continuous Pressure | 350 bar |
| Max. Intermit. Peak Pressure | 400 bar |
| Max. Torque at 350 bar | 71 Nm |
| Weight without inlet fitting | 9,00 kg |
| Weight with inlet fitting | 9,40 kg |
| Torque without inlet fitting | 8,70 N.m |
| Torque with inlet fitting | 9,15 N.m |
| Rotation | CW-CCW |
| Fluid | Min.B.Hyd.Oil |
| Inlet & Outlet | 3/4" |

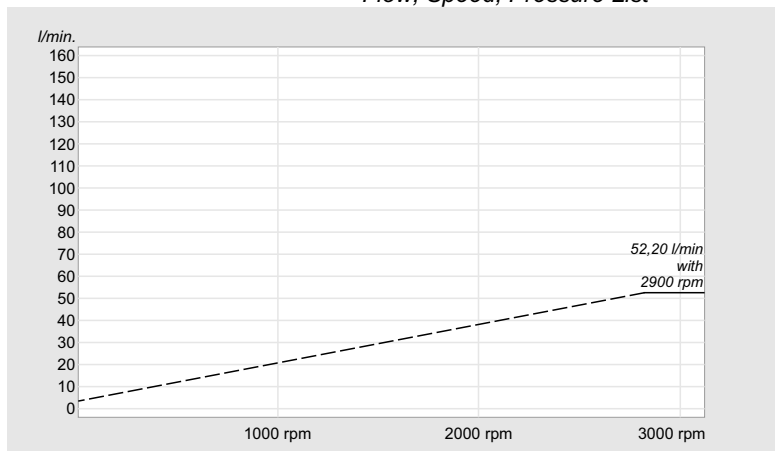


18 cc

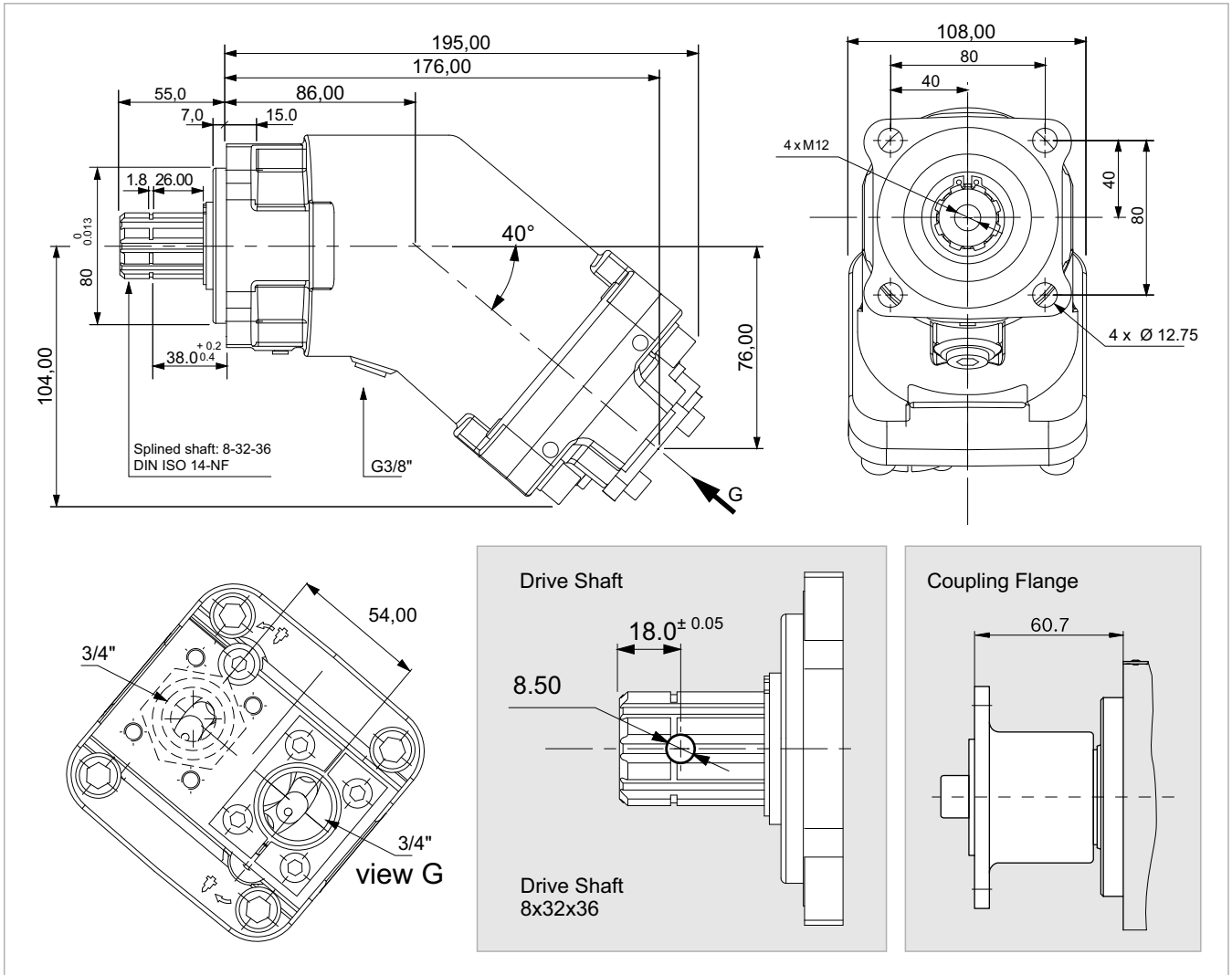


| | |
|-------------------------------------|---------------|
| x 1000 rpm | 18,00 cc |
| x 1500 rpm | 27,00 cc |
| Max. Continuous Pump Speed | 2300 rpm |
| Max. Limited Pump Speed | 2900 rpm |
| Max. Continuous Pressure | 350 bar |
| Max. Intermit. Peak Pressure | 400 bar |
| Max. Torque at 350 bar | 105 Nm |
| Weight without inlet fitting | 9,00 kg |
| Weight with inlet fitting | 9,40 kg |
| Torque without inlet fitting | 8,75 N.m |
| Torque with inlet fitting | 9,19 N.m |
| Rotation | CW-CCW |
| Fluid | Min.B.Hyd.Oil |
| Inlet & Outlet | 3/4" |

Flow, Speed, Pressure List

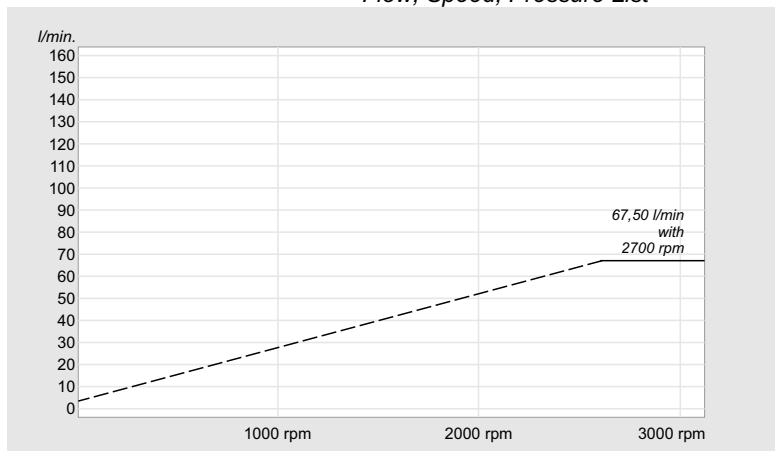


25 cc

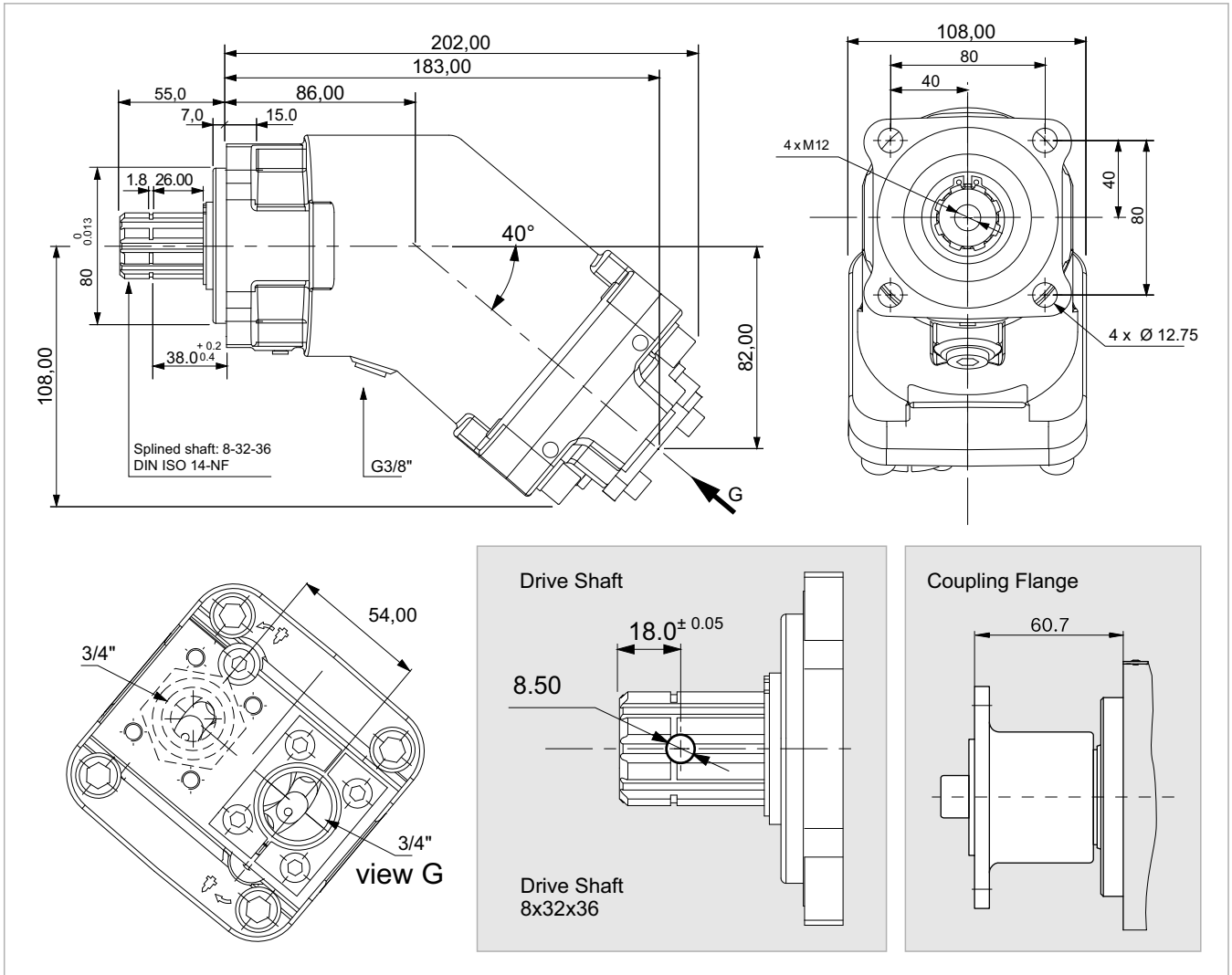


| | |
|-------------------------------------|---------------|
| x 1000 rpm | 25,00 cc |
| x 1500 rpm | 37,50 cc |
| Max. Continuous Pump Speed | 2300 rpm |
| Max. Limited Pump Speed | 2700 rpm |
| Max. Continuous Pressure | 350 bar |
| Max. Intermit. Peak Pressure | 400 bar |
| Max. Torque at 350 bar | 146 Nm |
| Weight without inlet fitting | 9,50 kg |
| Weight with inlet fitting | 9,90 kg |
| Torque without inlet fitting | 8,82 N.m |
| Torque with inlet fitting | 9,23 N.m |
| Rotation | CW-CCW |
| Fluid | Min.B.Hyd.Oil |
| Inlet & Outlet | 3/4" |

Flow, Speed, Pressure List

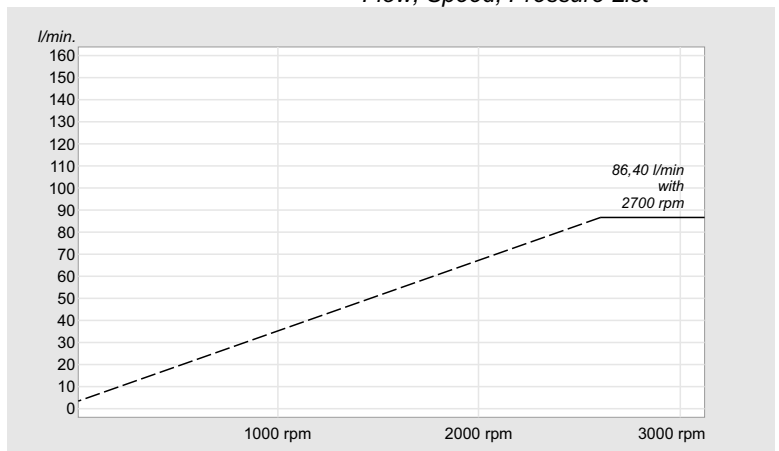


32 cc

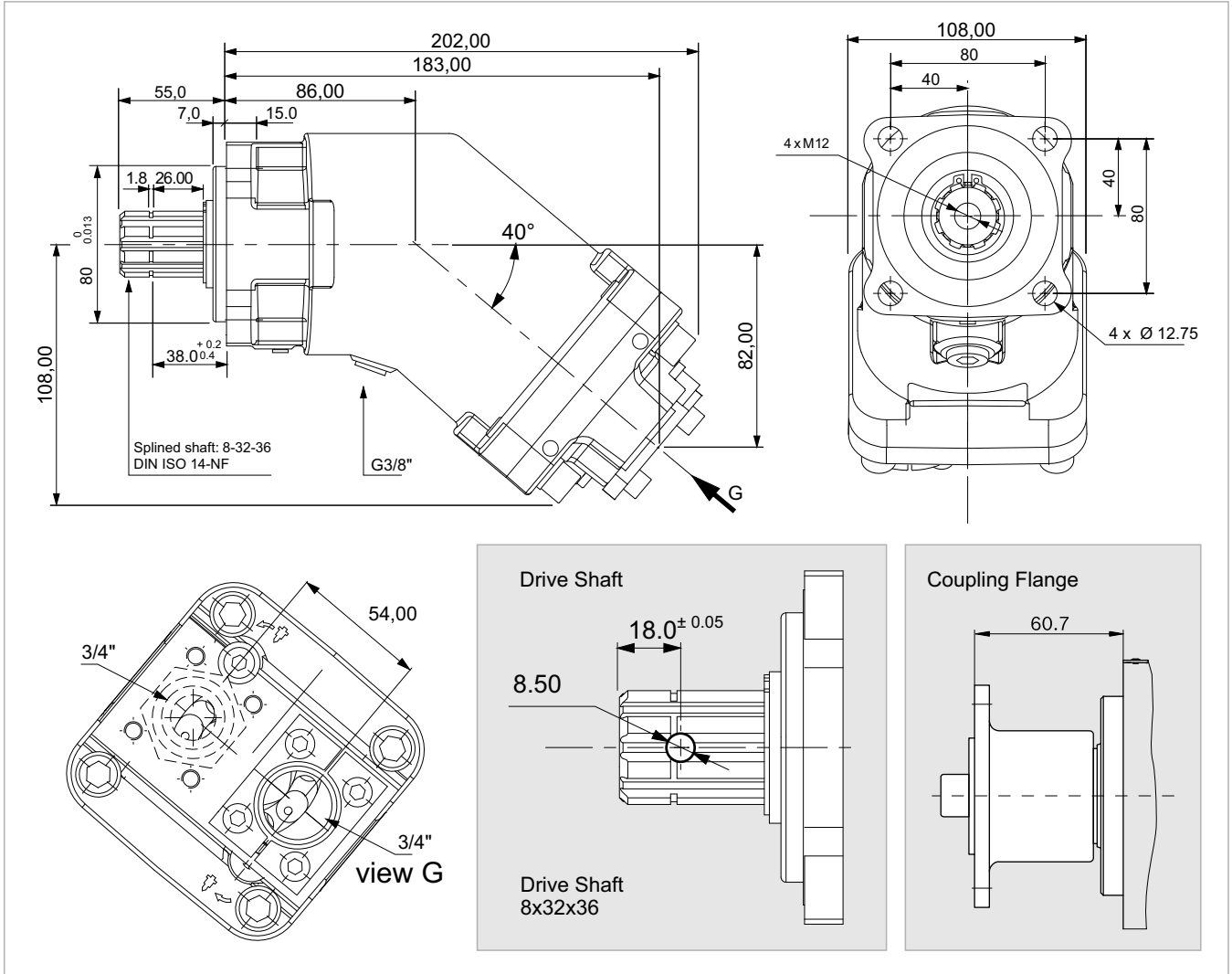


| | |
|-------------------------------------|---------------|
| x 1000 rpm | 32,00 cc |
| x 1500 rpm | 48,00 cc |
| Max. Continuous Pump Speed | 2250 rpm |
| Max. Limited Pump Speed | 2700 rpm |
| Max. Continuous Pressure | 350 bar |
| Max. Intermit. Peak Pressure | 400 bar |
| Max. Torque at 350 bar | 190 Nm |
| Weight without inlet fitting | 10,50 kg |
| Weight with inlet fitting | 10,90 kg |
| Torque without inlet fitting | 11,00 N.m |
| Torque with inlet fitting | 11,52 N.m |
| Rotation | CW-CCW |
| Fluid | Min.B.Hyd.Oil |
| Inlet & Outlet | 3/4" |

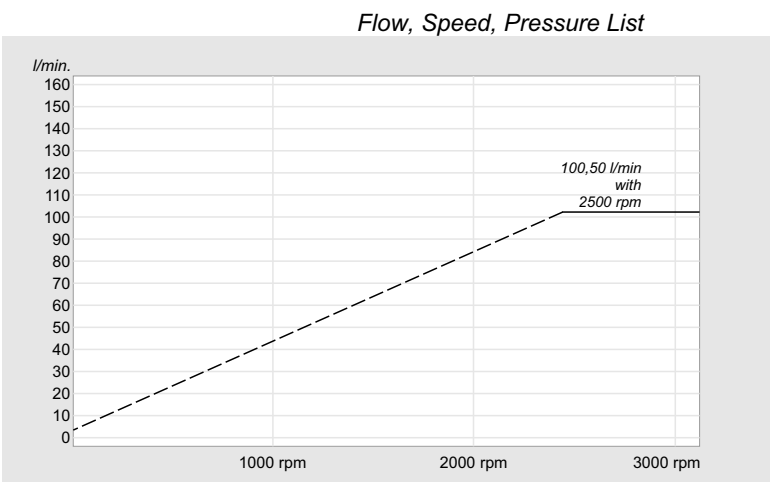
Flow, Speed, Pressure List



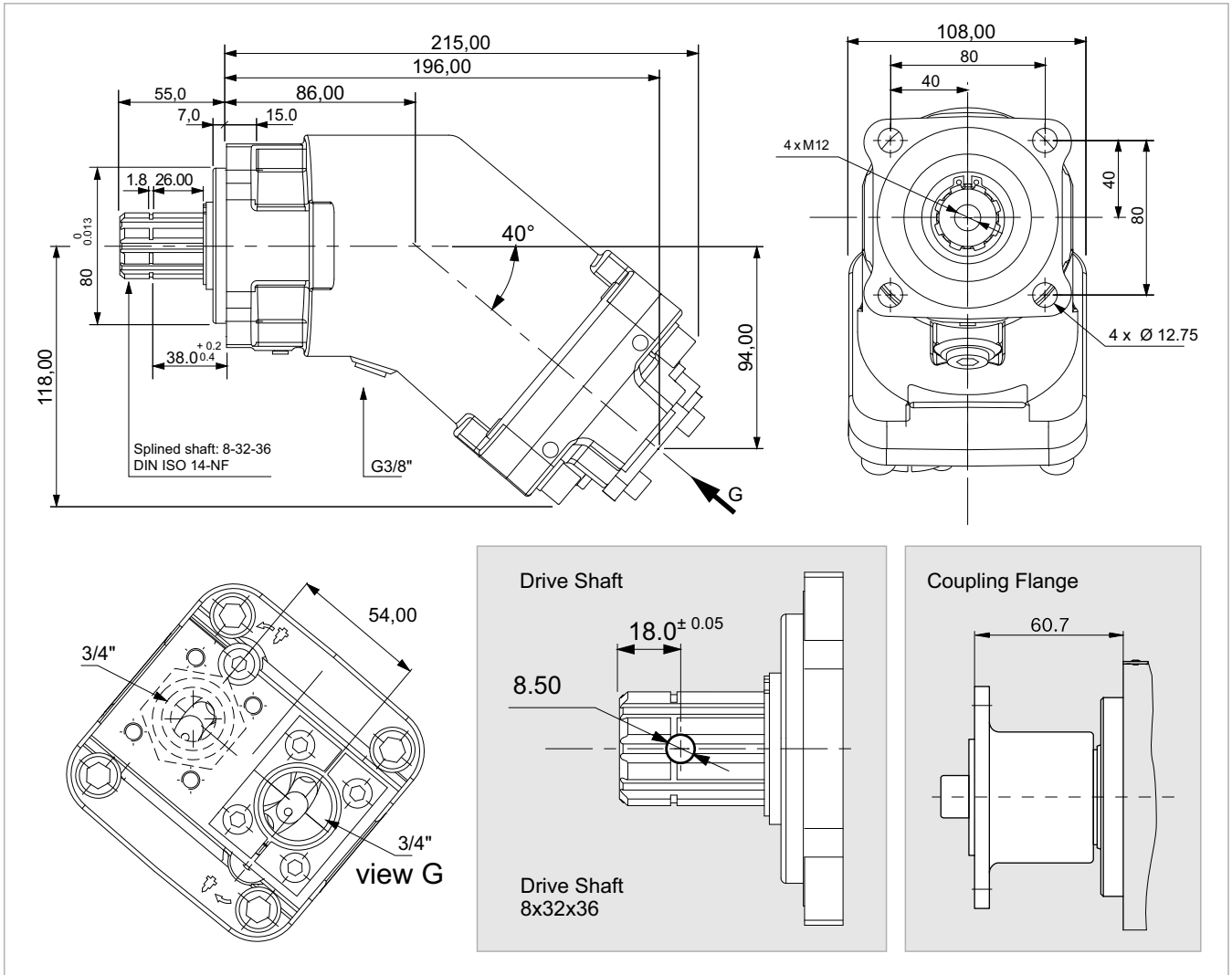
40 cc



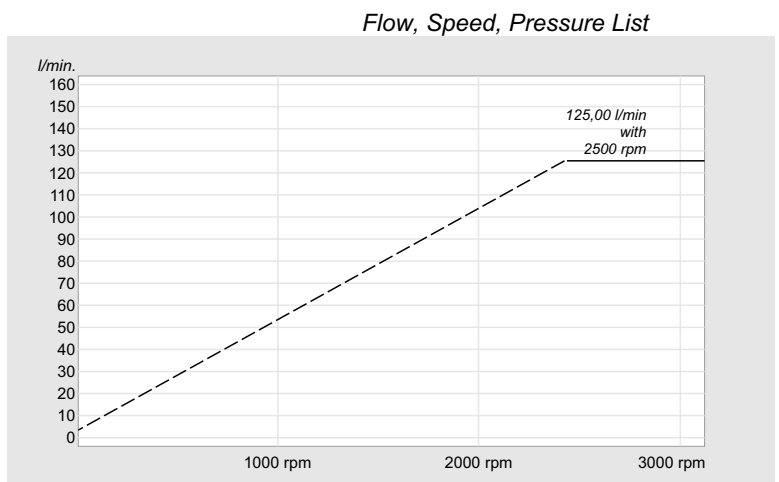
| | |
|-------------------------------------|---------------|
| x 1000 rpm | 40,20 cc |
| x 1500 rpm | 60,30 cc |
| Max. Continuous Pump Speed | 1900 rpm |
| Max. Limited Pump Speed | 2500 rpm |
| Max. Continuous Pressure | 350 bar |
| Max. Intermit. Peak Pressure | 400 bar |
| Max. Torque at 350 bar | 240 Nm |
| Weight without inlet fitting | 10,50 kg |
| Weight with inlet fitting | 10,90 kg |
| Torque without inlet fitting | 11,12 N.m |
| Torque with inlet fitting | 11,40 N.m |
| Rotation | CW-CCW |
| Fluid | Min.B.Hyd.Oil |
| Inlet & Outlet | 3/4" |



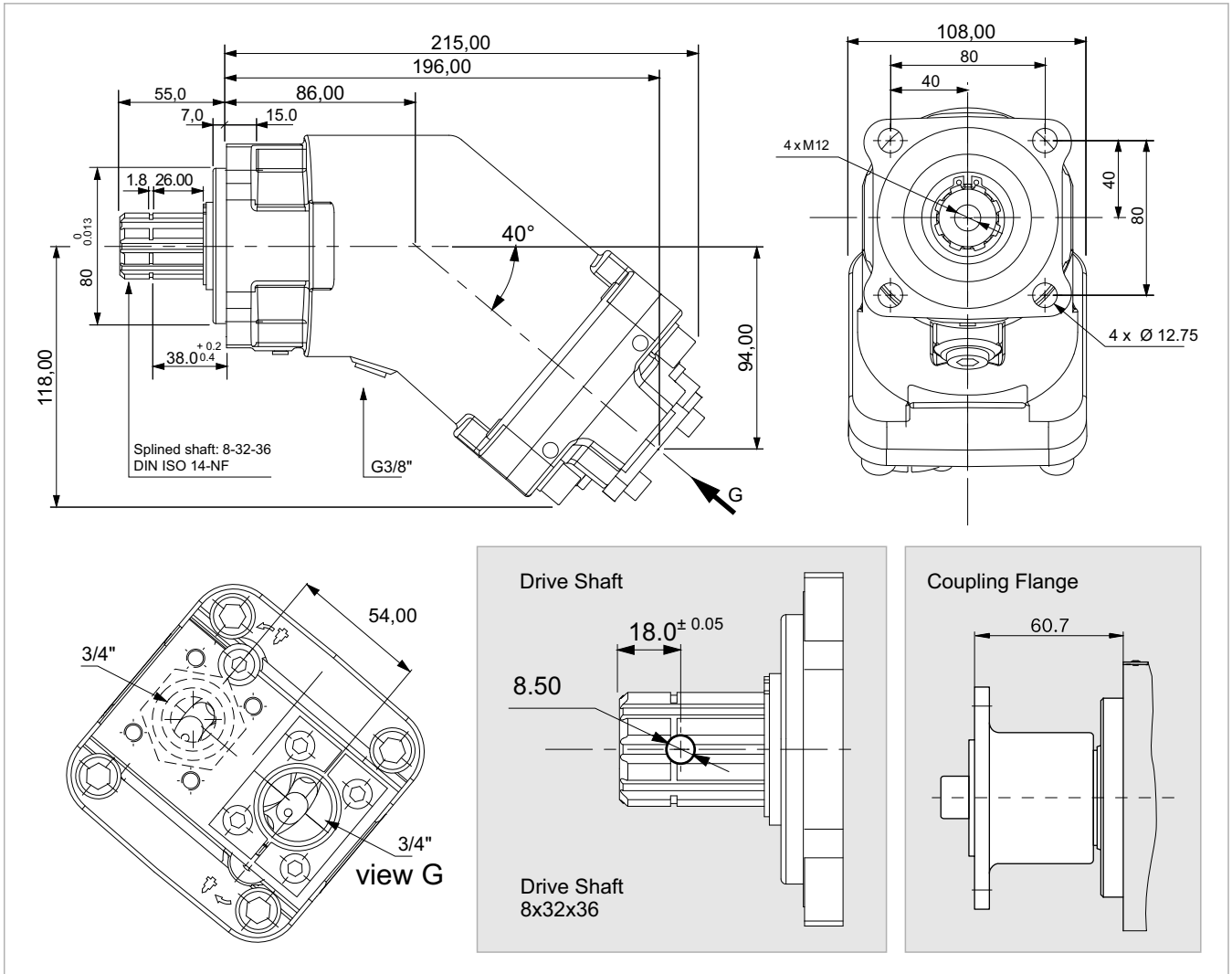
50 cc



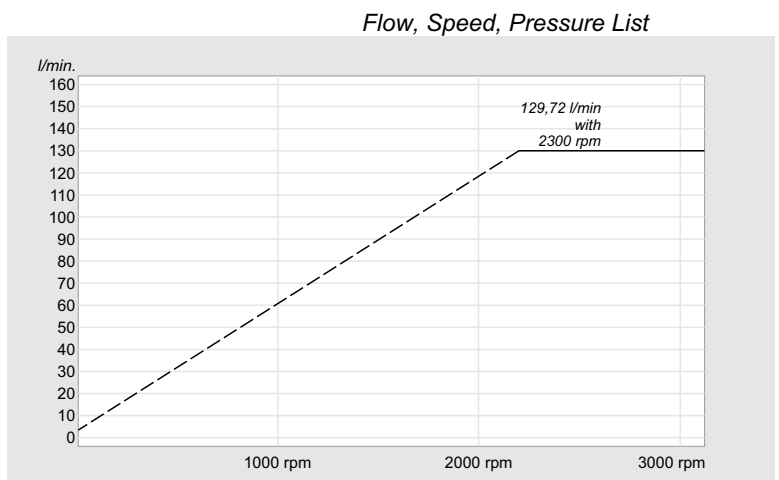
| | |
|-------------------------------------|---------------|
| x 1000 rpm | 50,00 cc |
| x 1500 rpm | 75,00 cc |
| Max. Continuous Pump Speed | 1900 rpm |
| Max. Limited Pump Speed | 2500 rpm |
| Max. Continuous Pressure | 350 bar |
| Max. Intermit. Peak Pressure | 400 bar |
| Max. Torque at 350 bar | 292 Nm |
| Weight without inlet fitting | 11,00 kg |
| Weight with inlet fitting | 11,40 kg |
| Torque without inlet fitting | 11,72 N.m |
| Torque with inlet fitting | 12,20 N.m |
| Rotation | CW-CCW |
| Fluid | Min.B.Hyd.Oil |
| Inlet & Outlet | 3/4" |



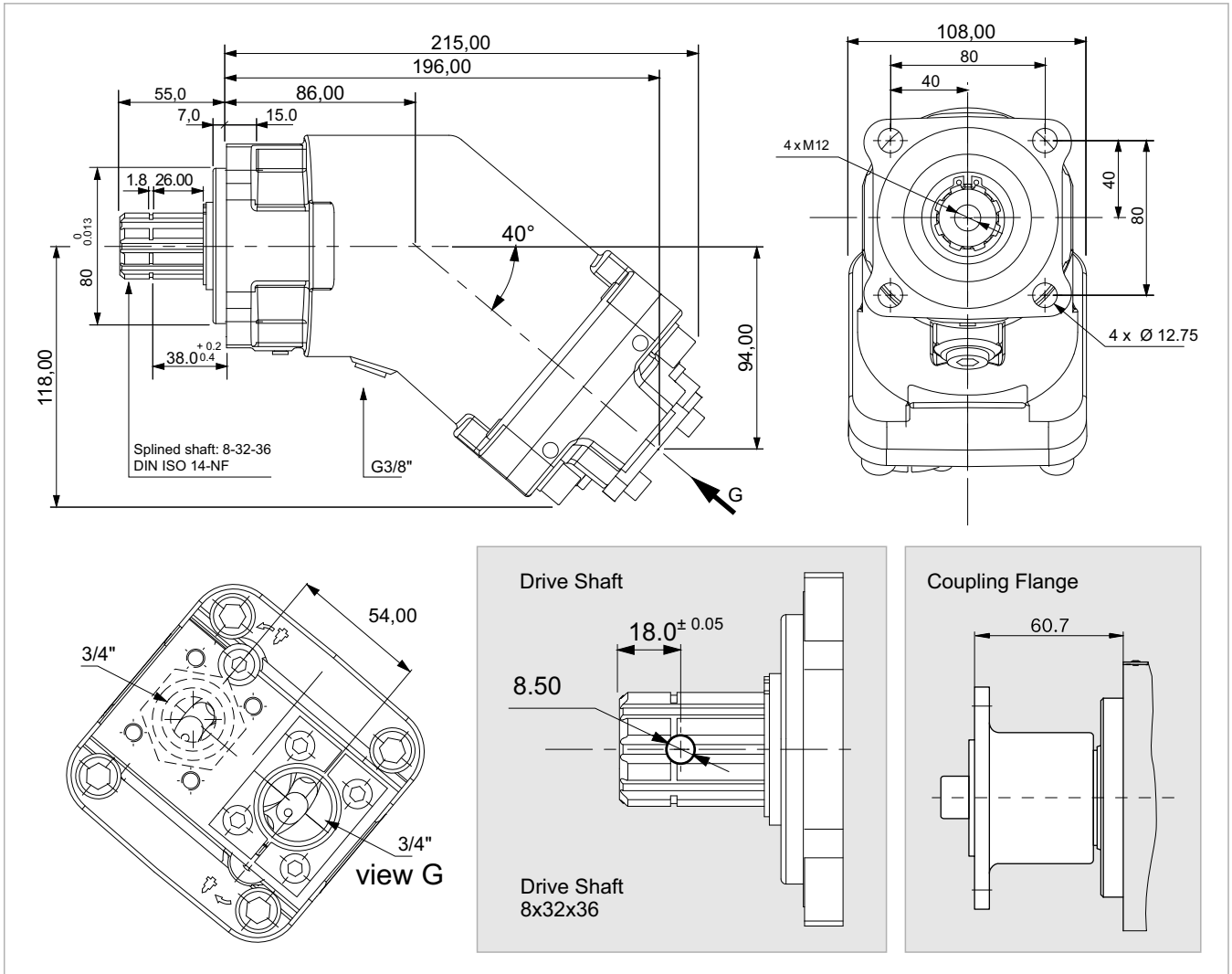
56 cc



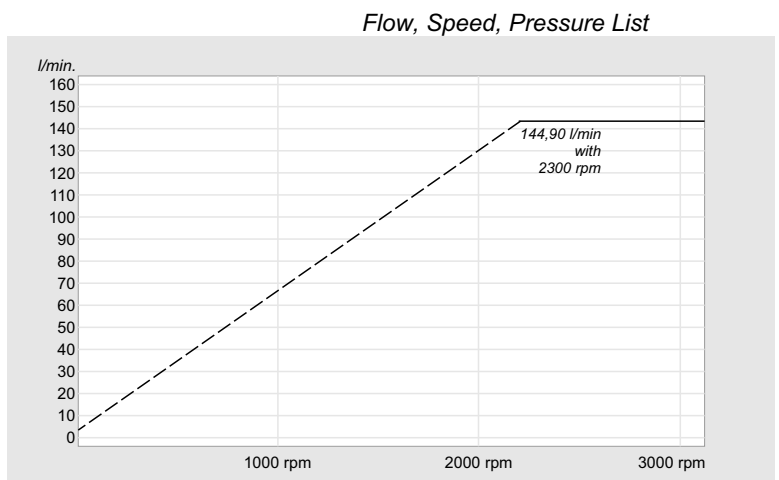
| | |
|-------------------------------------|---------------|
| x 1000 rpm | 56,40 cc |
| x 1500 rpm | 84,60 cc |
| Max. Continuous Pump Speed | 1900 rpm |
| Max. Limited Pump Speed | 2300 rpm |
| Max. Continuous Pressure | 350 bar |
| Max. Intermit. Peak Pressure | 400 bar |
| Max. Torque at 350 bar | 330 Nm |
| Weight without inlet fitting | 11,50 kg |
| Weight with inlet fitting | 11,90 kg |
| Torque without inlet fitting | 11,79 N.m |
| Torque with inlet fitting | 12,24 N.m |
| Rotation | CW-CCW |
| Fluid | Min.B.Hyd.Oil |
| Inlet & Outlet | 3/4" |



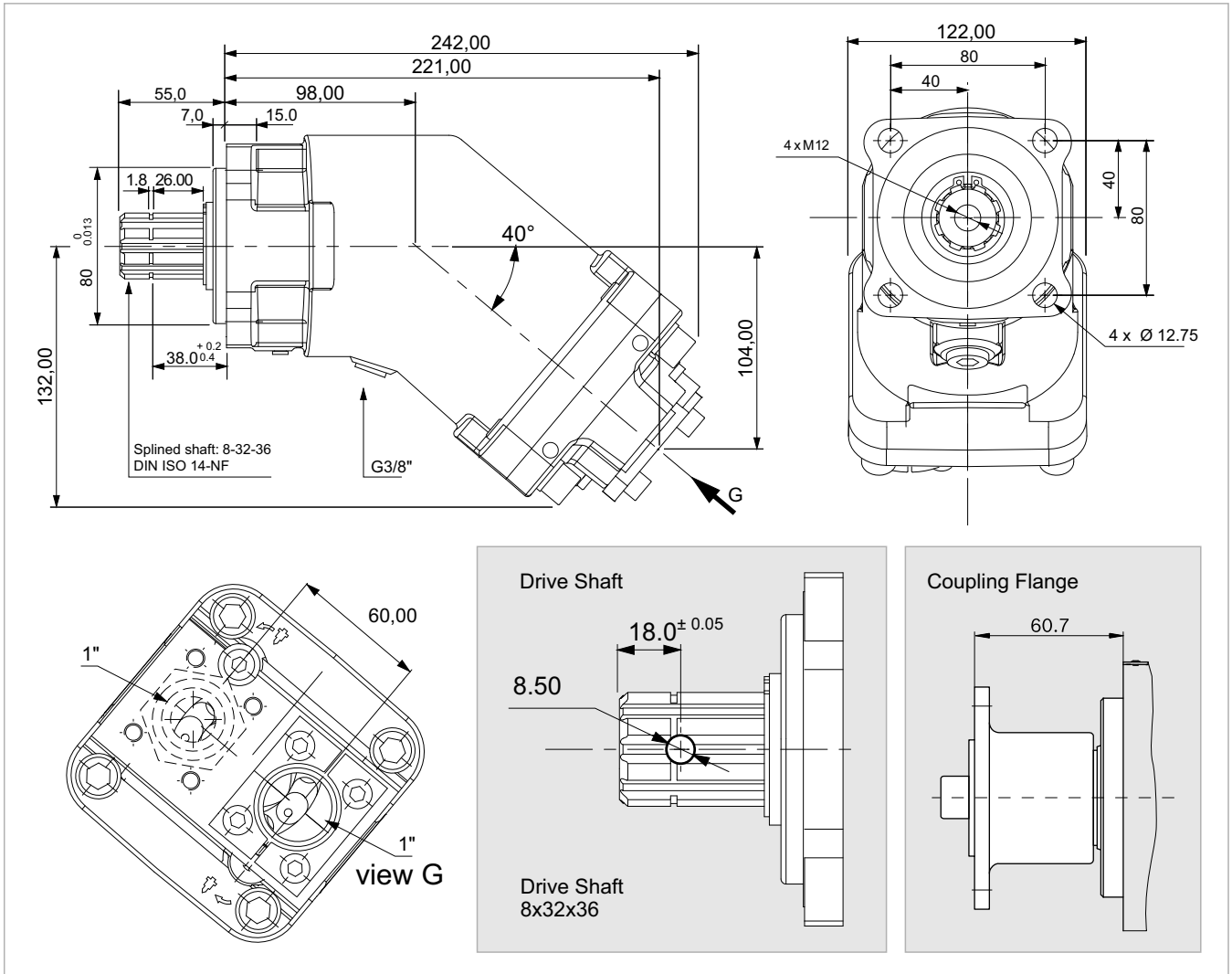
63 cc



| | |
|-------------------------------------|---------------|
| x 1000 rpm | 63,00 cc |
| x 1500 rpm | 94,50 cc |
| Max. Continuous Pump Speed | 1900 rpm |
| Max. Limited Pump Speed | 2300 rpm |
| Max. Continuous Pressure | 350 bar |
| Max. Intermit. Peak Pressure | 400 bar |
| Max. Torque at 350 bar | 360 Nm |
| Weight without inlet fitting | 11,50 kg |
| Weight with inlet fitting | 11,90 kg |
| Torque without inlet fitting | 11,82 N.m |
| Torque with inlet fitting | 12,28 N.m |
| Rotation | CW-CCW |
| Fluid | Min.B.Hyd.Oil |
| Inlet & Outlet | 3/4" |

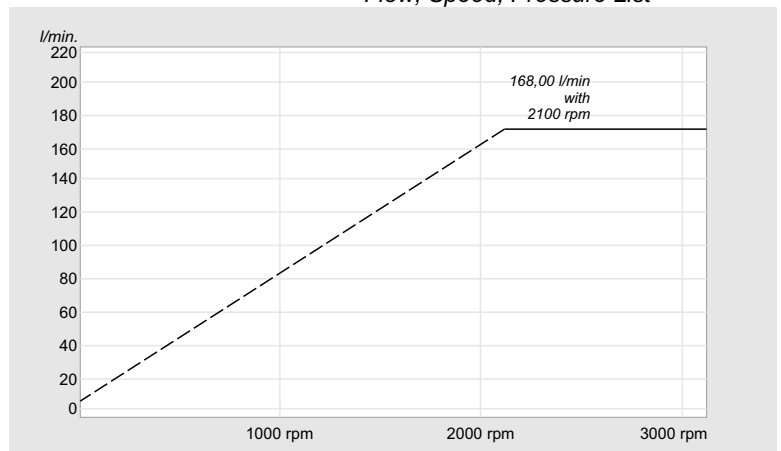


80 cc

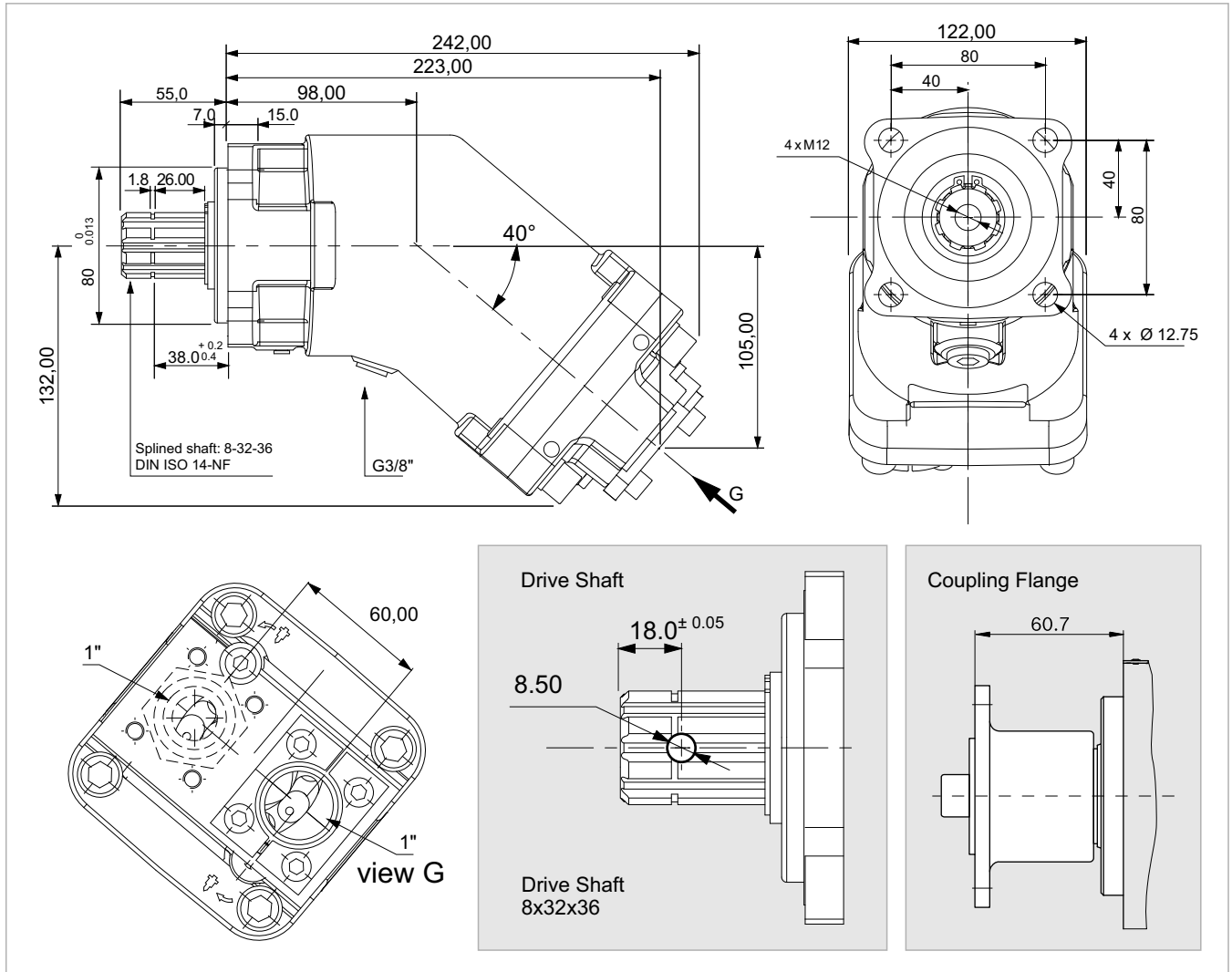


| | |
|-------------------------------------|---------------|
| x 1000 rpm | 80,00 cc |
| x 1500 rpm | 120,00 cc |
| Max. Continuous Pump Speed | 1700 rpm |
| Max. Limited Pump Speed | 2100 rpm |
| Max. Continuous Pressure | 350 bar |
| Max. Intermit. Peak Pressure | 400 bar |
| Max. Torque at 350 bar | 460 Nm |
| Weight without inlet fitting | 15,00 kg |
| Weight with inlet fitting | 15,40 kg |
| Torque without inlet fitting | 17,80 N.m |
| Torque with inlet fitting | 18,33 N.m |
| Rotation | CW-CCW |
| Fluid | Min.B.Hyd.Oil |
| Inlet & Outlet | 1" |

Flow, Speed, Pressure List



108 cc



| | |
|-------------------------------------|---------------|
| x 1000 rpm | 108,40 cc |
| x 1500 rpm | 162,60 cc |
| Max. Continuous Pump Speed | 1700 rpm |
| Max. Limited Pump Speed | 1900 rpm |
| Max. Continuous Pressure | 350 bar |
| Max. Intermit. Peak Pressure | 400 bar |
| Max. Torque at 350 bar | 620 Nm |
| Weight without inlet fitting | 15,50 kg |
| Weight with inlet fitting | 15,90 kg |
| Torque without inlet fitting | 17,92 N.m |
| Torque with inlet fitting | 18,45 N.m |
| Rotation | CW-CCW |
| Fluid | Min.B.Hyd.Oil |
| Inlet & Outlet | 1" |

