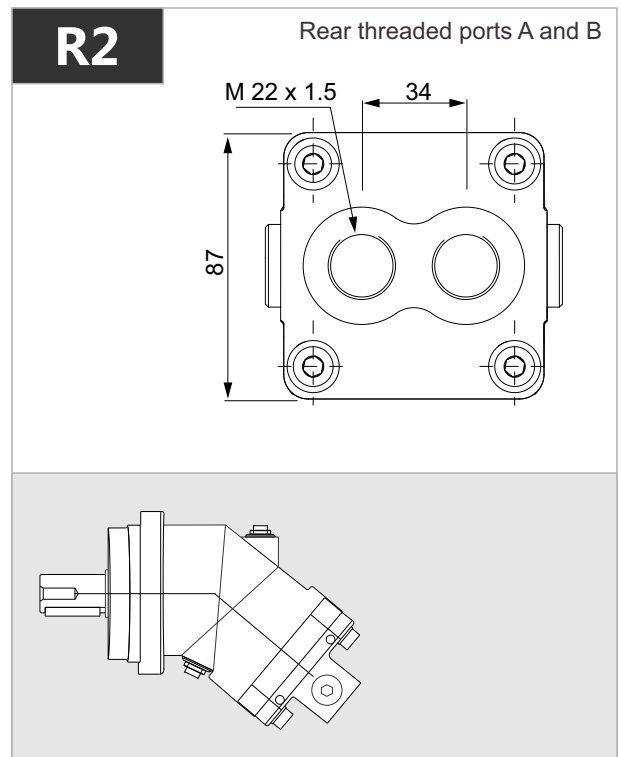
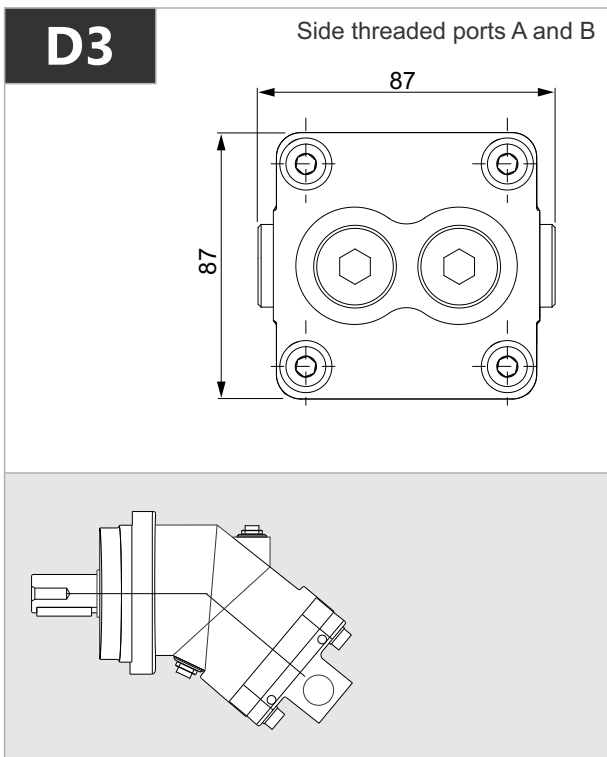
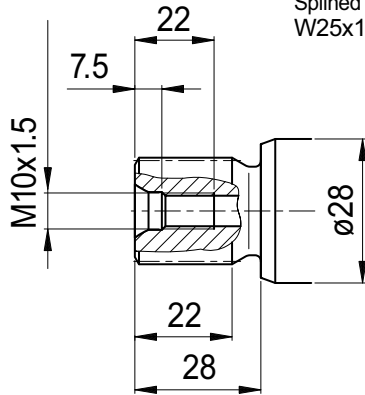


x 1000 rpm	x 1500 rpm	Max. Contin. Pump Speed	Max. Intermit. Pump Speed	Max. Contin. Pressure	Max. Peak Pressure	Torque bar	Torque at 350 bar	Max. Flow	Weight without accessor.	Weight with accessor.	Max. Motor Temp.	Min. Motor Temp.
10,00 cc	15,00 cc	8000 rpm	8800 rpm	400 bar	450 bar	0.17 m.N/bar	64 m.N	80	6,00 kg	6,20 kg	-25°	110°



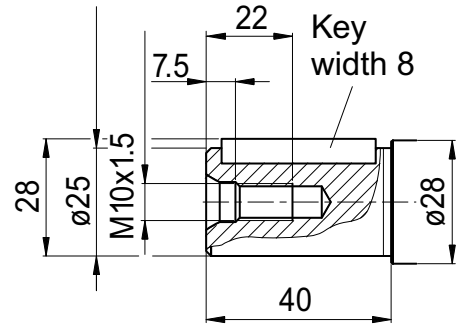
**S1**

Splined shaft DIN 5480  
W25x1.25x18x9g



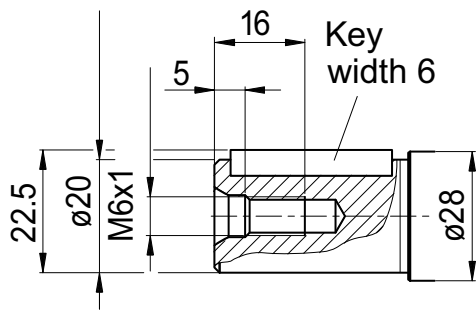
**K1**

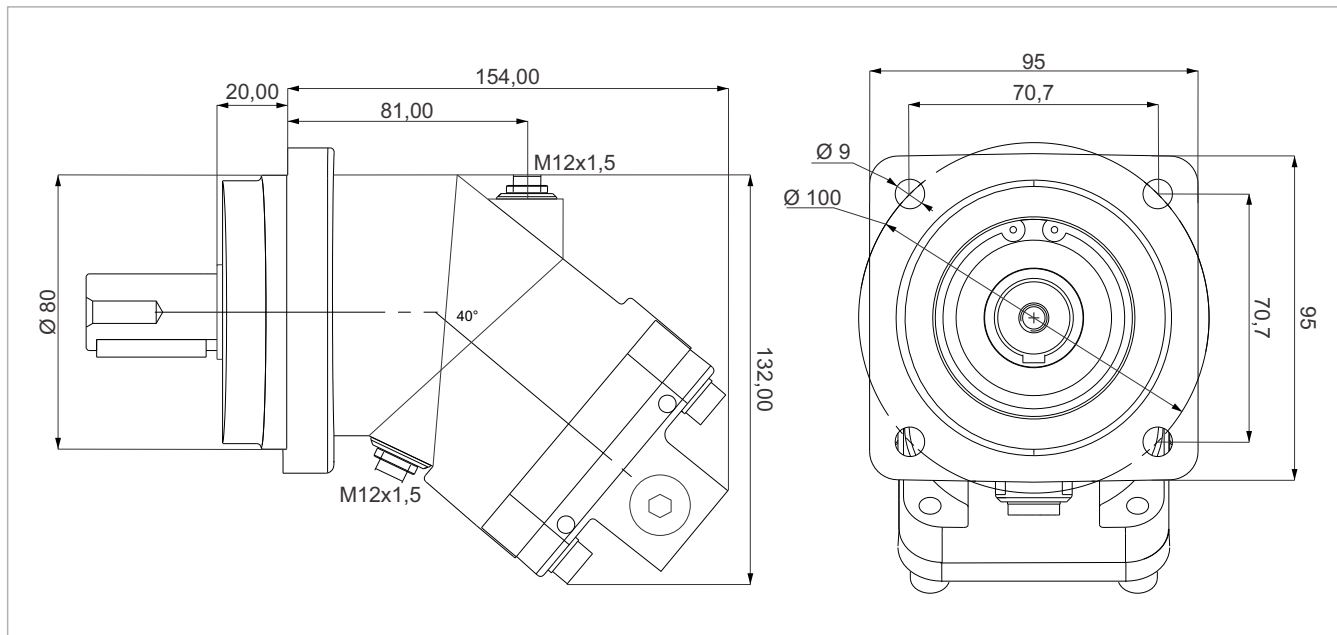
Parallel keyed shaft  
DIN 6885, AS8x7x32



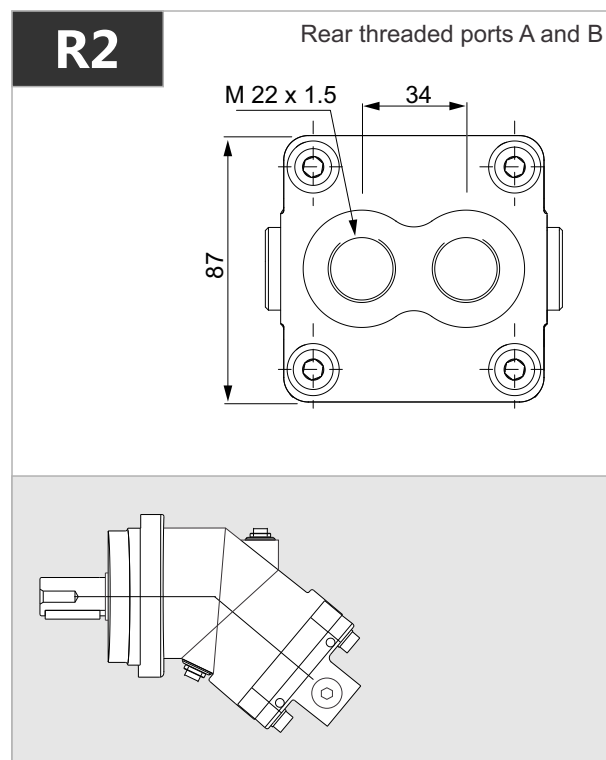
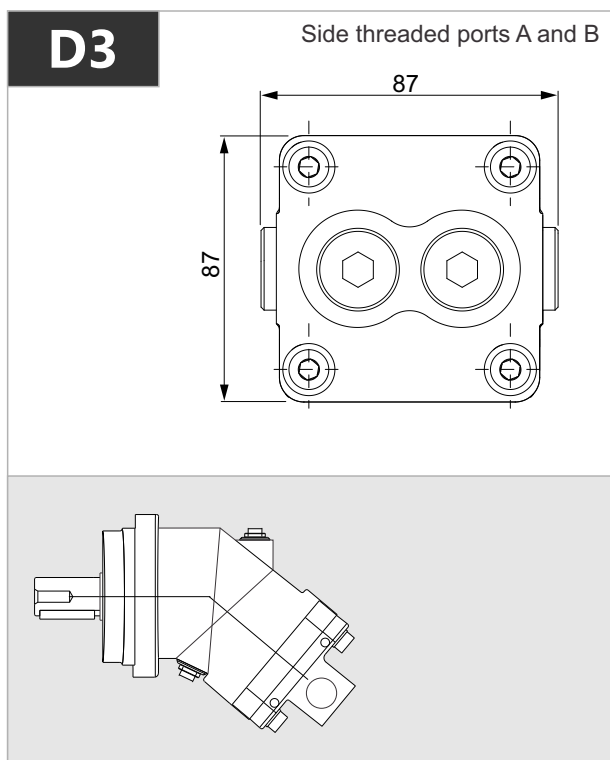
**K2**

Parallel keyed shaft  
DIN 6885, AS6x6x32



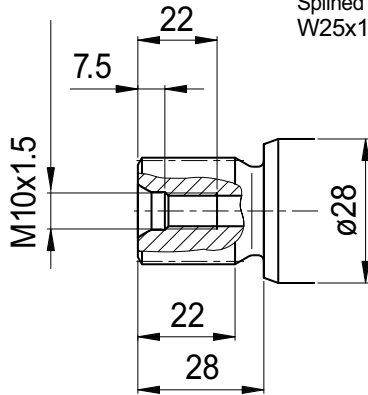


x 1000 rpm	x 1500 rpm	Max. Contin. Pump Speed	Max. Intermit. Pump Speed	Max. Contin. Pressure	Max. Peak Pressure	Torque bar	Torque at 350 bar	Max. Flow	Weight without accessor.	Weight with accessor.	Max. Motor Temp.	Min. Motor Temp.
12,00 cc	18,00 cc	8000 rpm	8800 rpm	400 bar	450 bar	0.18 m.N/bar	66 m.N	96	6,00 kg	6,20 kg	-25°	110°



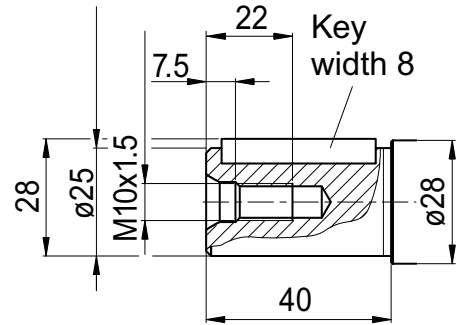
**S1**

Splined shaft DIN 5480  
W25x1.25x18x9g



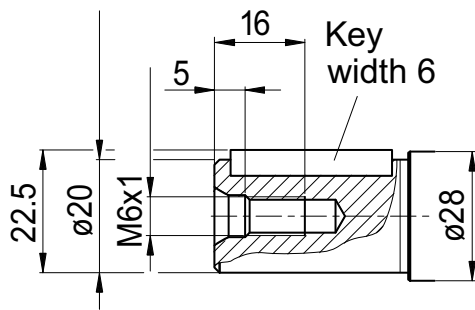
**K1**

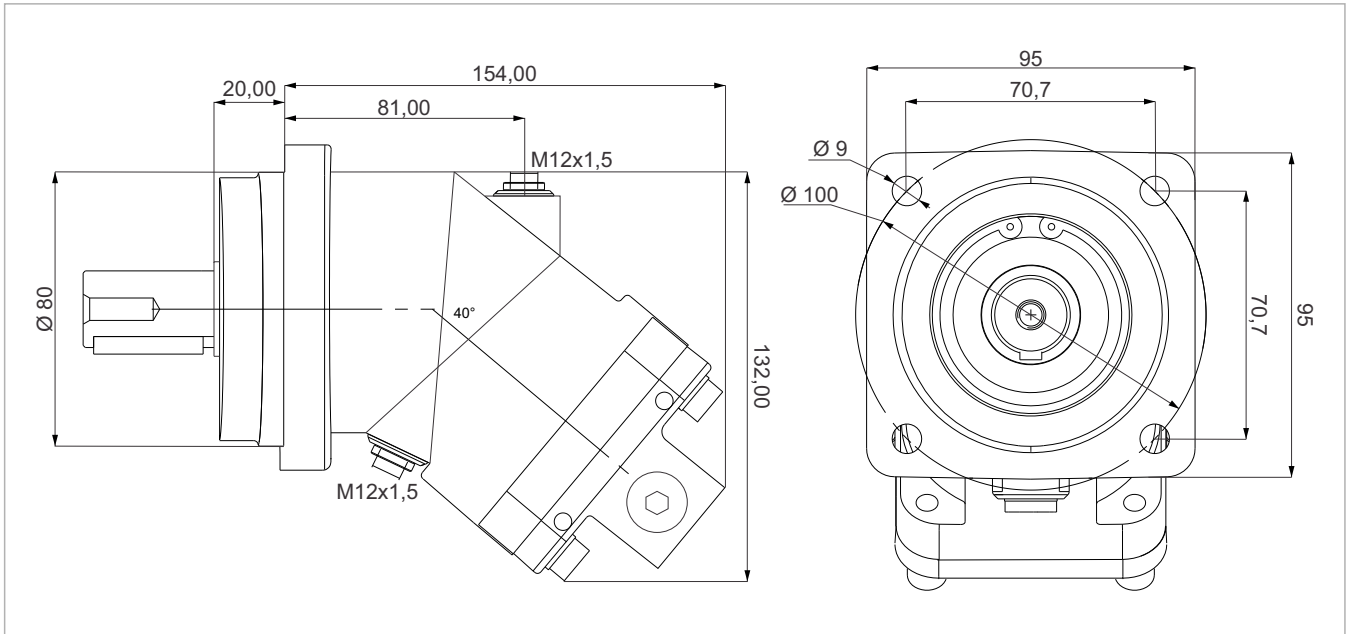
Parallel keyed shaft  
DIN 6885, AS8x7x32



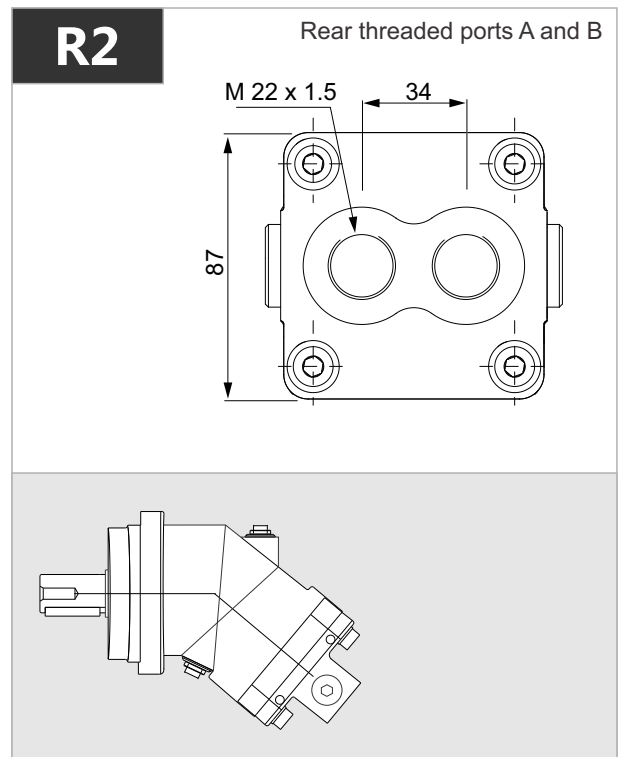
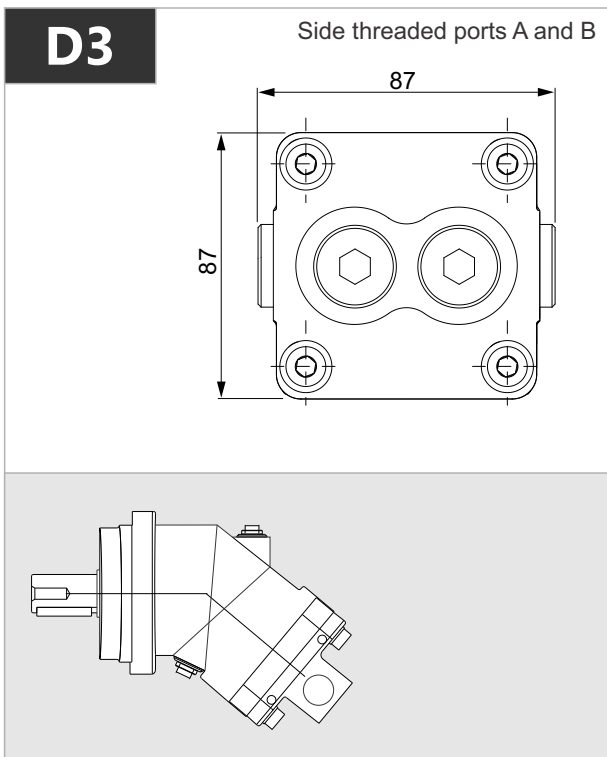
**K2**

Parallel keyed shaft  
DIN 6885, AS6x6x32



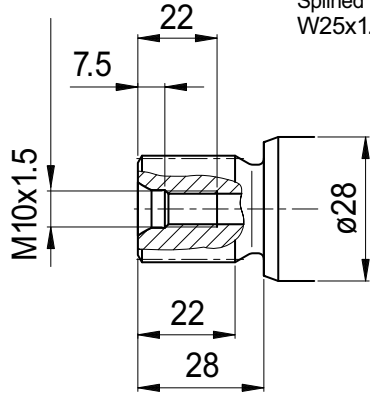


x 1000 rpm	x 1500 rpm	Max. Contin. Pump Speed	Max. Intermit. Pump Speed	Max. Contin. Pressure	Max. Peak Pressure	Torque bar	Torque at 350 bar	Max. Flow	Weight without accessor.	Weight with accessor.	Max. Motor Temp.	Min. Motor Temp.
18,00 cc	27,00 cc	8000 rpm	8800 rpm	400 bar	450 bar	0.28 m.N/bar	98 m.N	144	6,00 kg	6,20 kg	-25°	110°



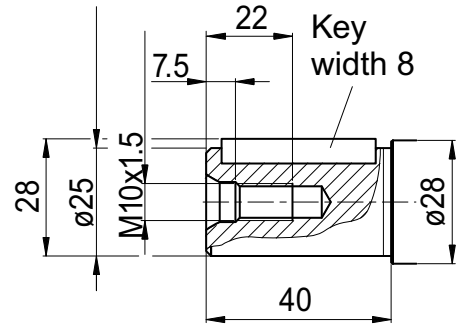
**S1**

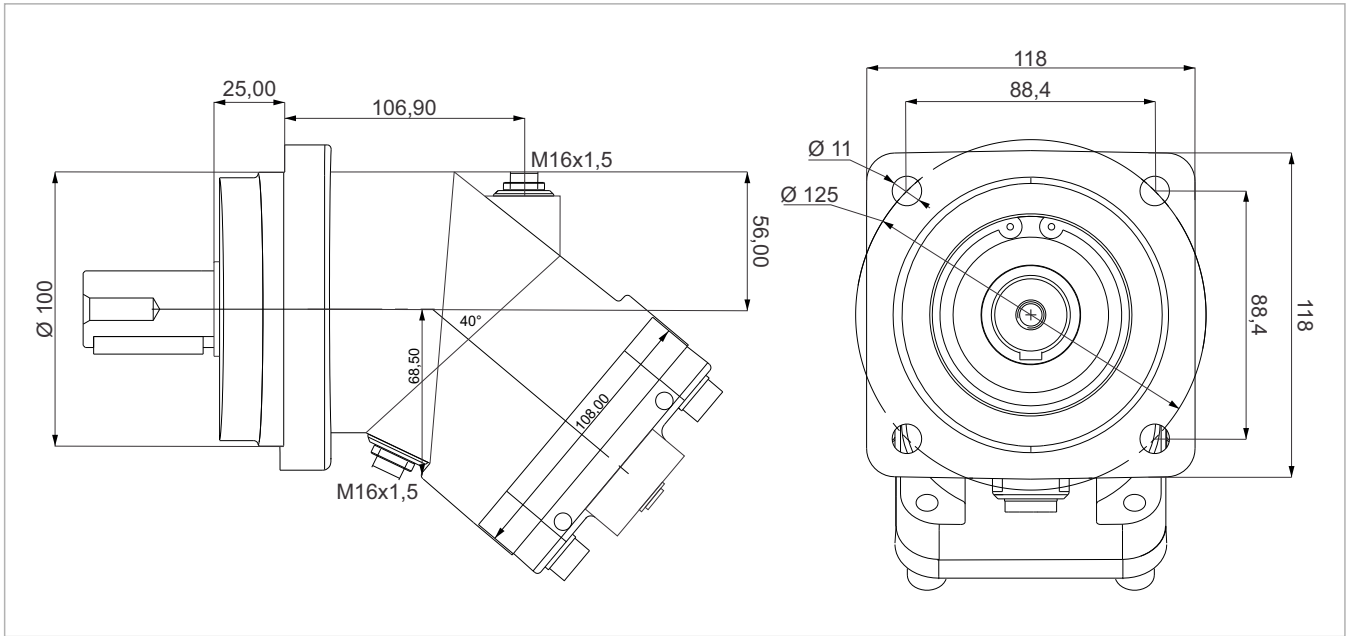
Splined shaft DIN 5480  
W25x1.25x18x9g



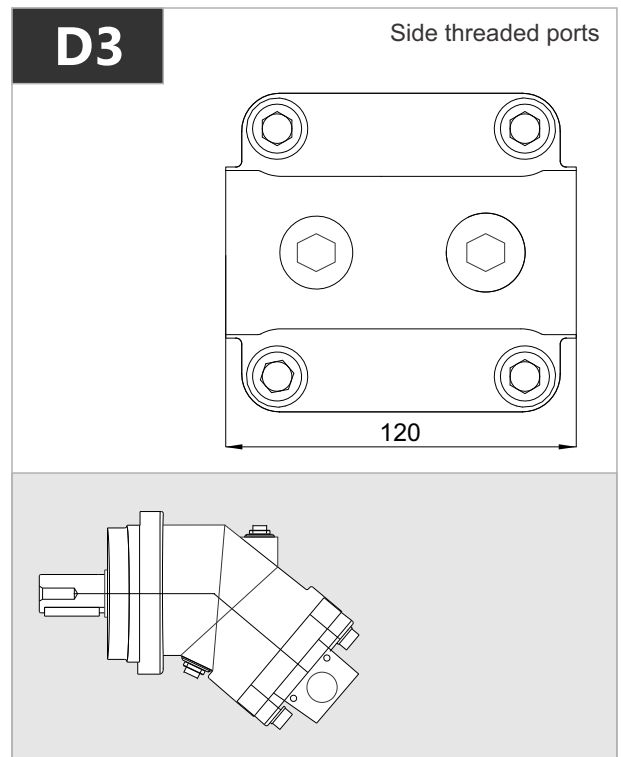
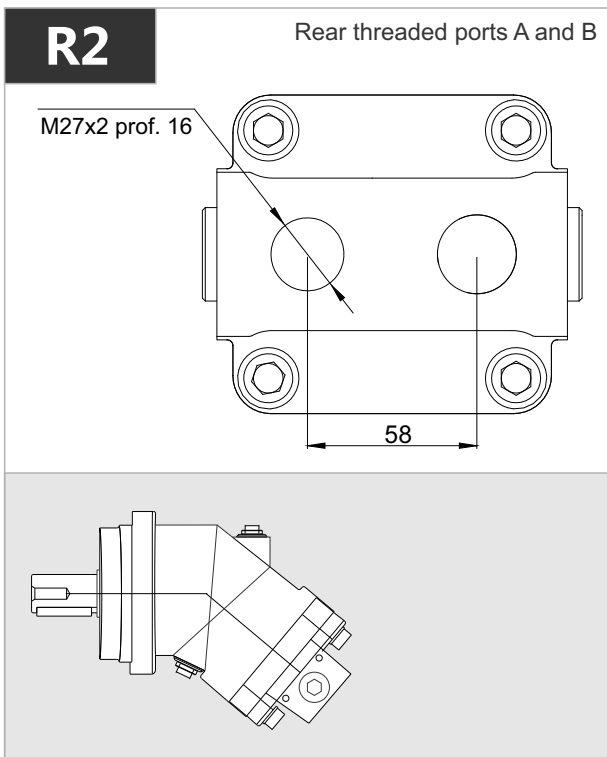
**K1**

Parallel keyed shaft  
DIN 6885, AS8x7x32



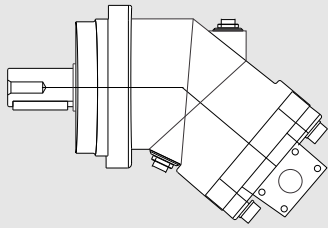
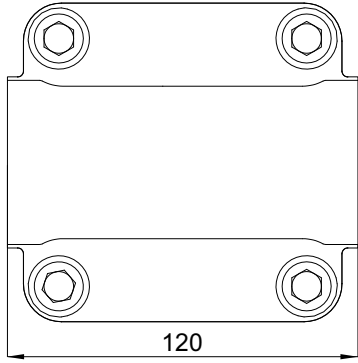


x 1000 rpm	x 1500 rpm	Max. Contin. Pump Speed	Max. Intermit. Pump Speed	Max. Contin. Pressure	Max. Peak Pressure	Torque bar	Torque at 350 bar	Max. Flow	Weight without accessor.	Weight with accessor.	Max. Motor Temp.	Min. Motor Temp.
25,00 cc	37,50 cc	6250 rpm	6800 rpm	400 bar	450 bar	0.40 m.N/bar	140 m.N	156	11,50 kg	11,80 kg	-25°	110°



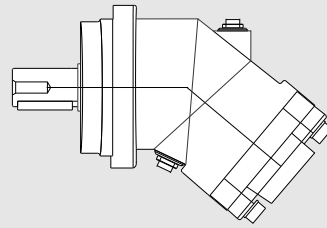
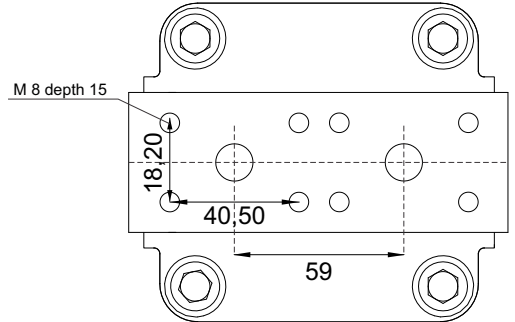
**D1-D2**

Side flange ports A and B  
SAE 1/2" 6000 PSI



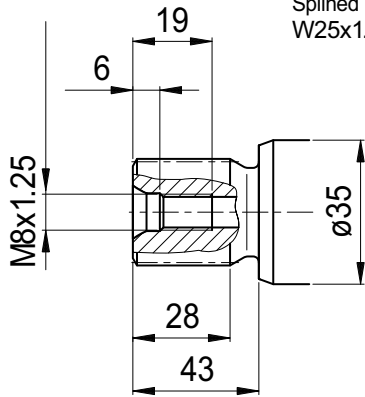
**R1**

Rear flange ports A and B  
SAE 1/2" 6000 PSI



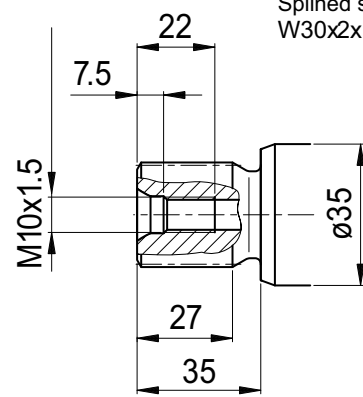
**S1**

Splined shaft DIN 5480  
W25x1.25x18x9g



**S2**

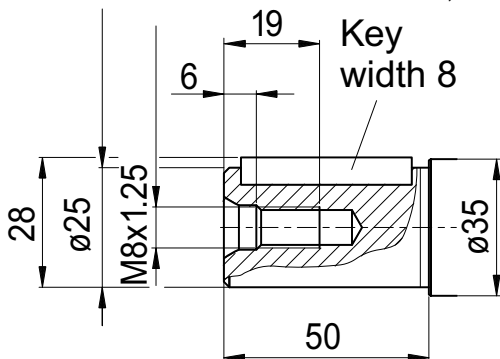
Splined shaft DIN 5480  
W30x2x14x9g



**K1**

Parallel keyed shaft  
DIN 6885, As8x7x40

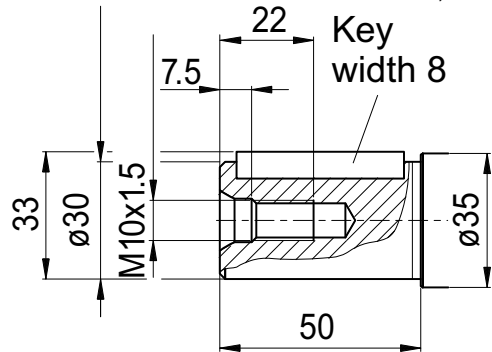
Key  
width 8



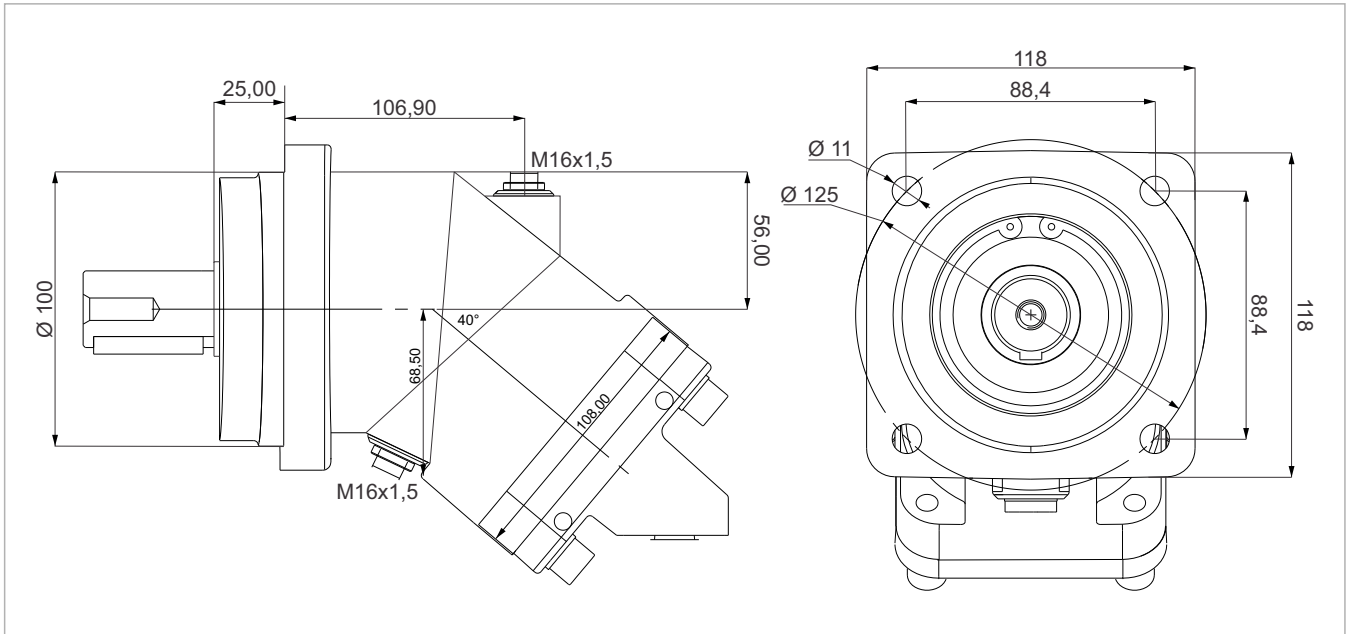
**K2**

Parallel keyed shaft  
DIN 6885, As8x7x40

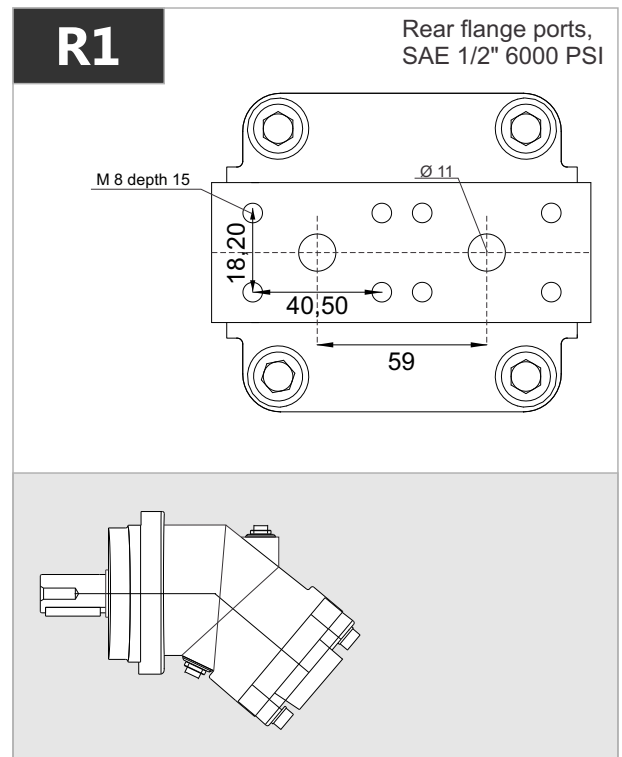
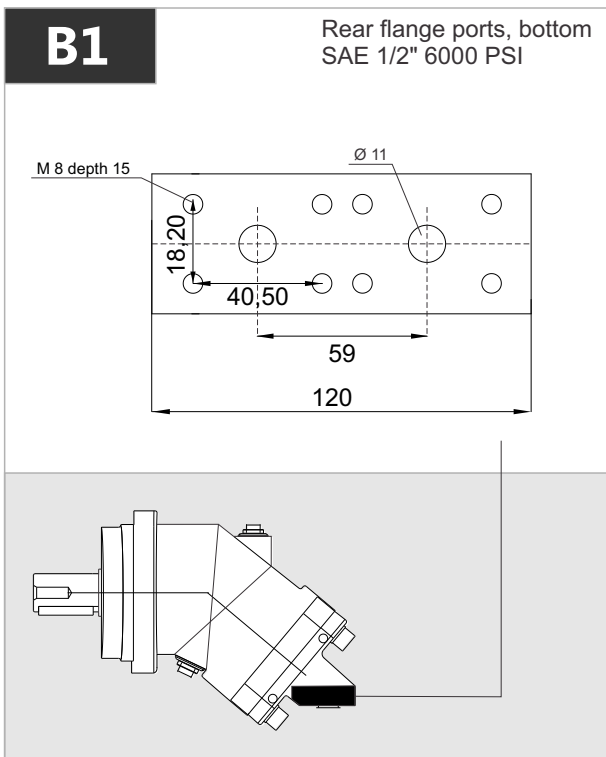
Key  
width 8





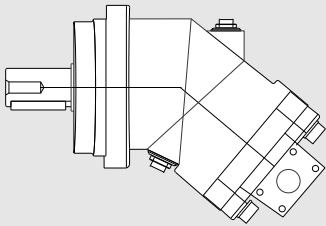
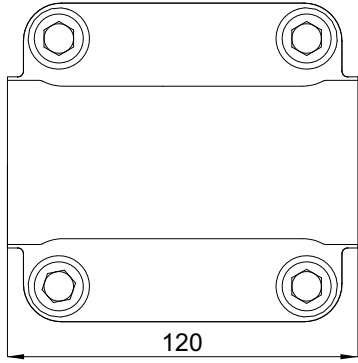


x 1000 rpm	x 1500 rpm	Max. Contin. Pump Speed	Max. Intermit. Pump Speed	Max. Contin. Pressure	Max. Peak Pressure	Torque bar	Torque at 350 bar	Max. Flow	Weight without accessor.	Weight with accessor.	Max. Motor Temp.	Min. Motor Temp.
32,00 cc	48,00 cc	6250 rpm	6800 rpm	400 bar	450 bar	0.51 m.N/bar	174 m.N	200	11,50 kg	11,90 kg	-25°	110°



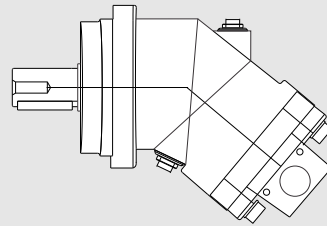
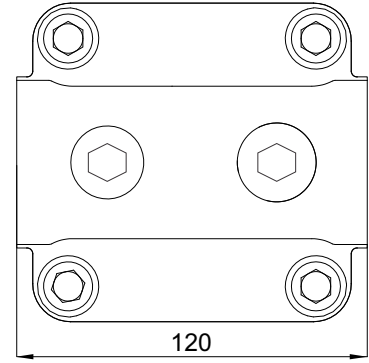
**D1-D2**

Side flange ports A and B  
SAE 1/2" 6000 PSI



**D3**

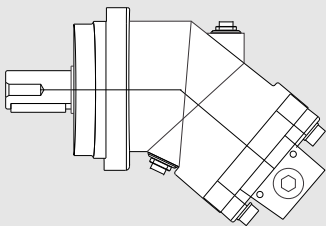
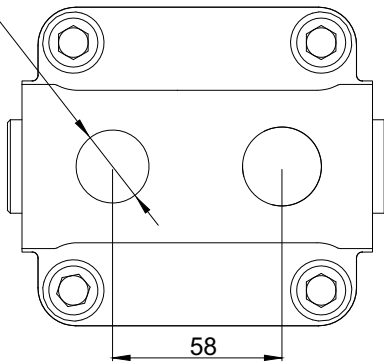
Side threaded ports A and B



**R2**

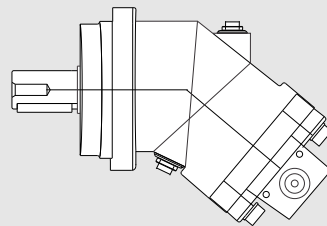
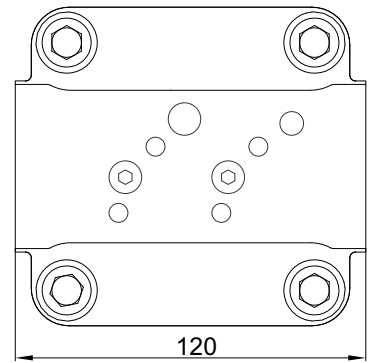
Rear threaded ports

M27x2 prof. 16



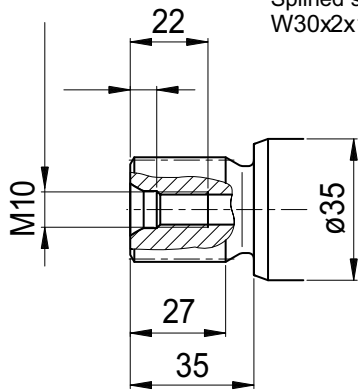
**D4**

Side threaded ports A and B



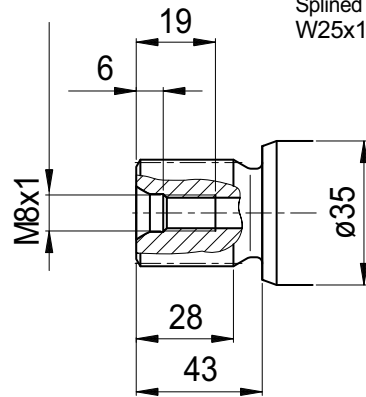
**S1**

Splined shaft DIN 5480  
W30x2x14x9g



**S2**

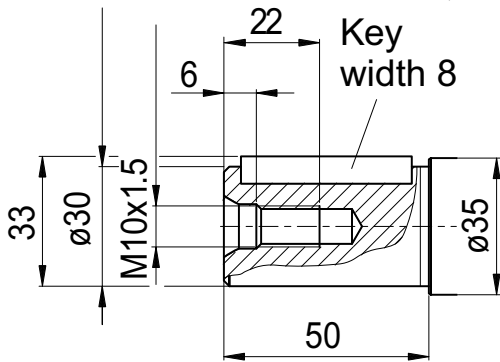
Splined shaft DIN 5480  
W25x1.25x18x9g



**K1**

Parallel keyed shaft  
DIN 6885, As8x7x40

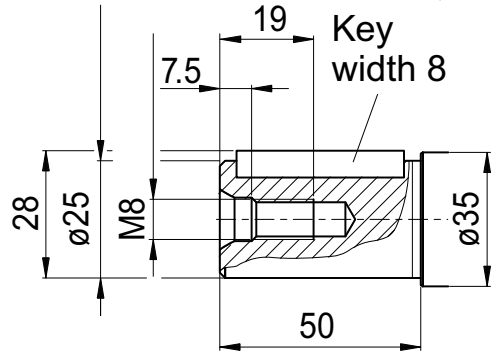
Key  
width 8

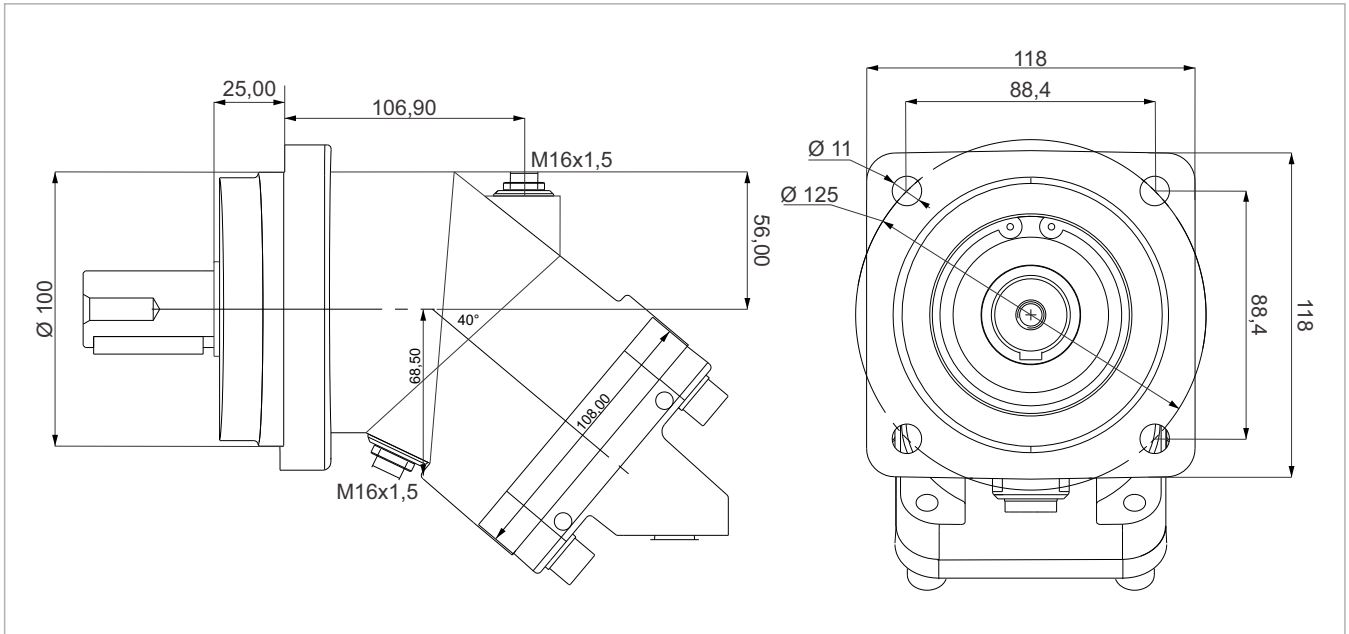


**K2**

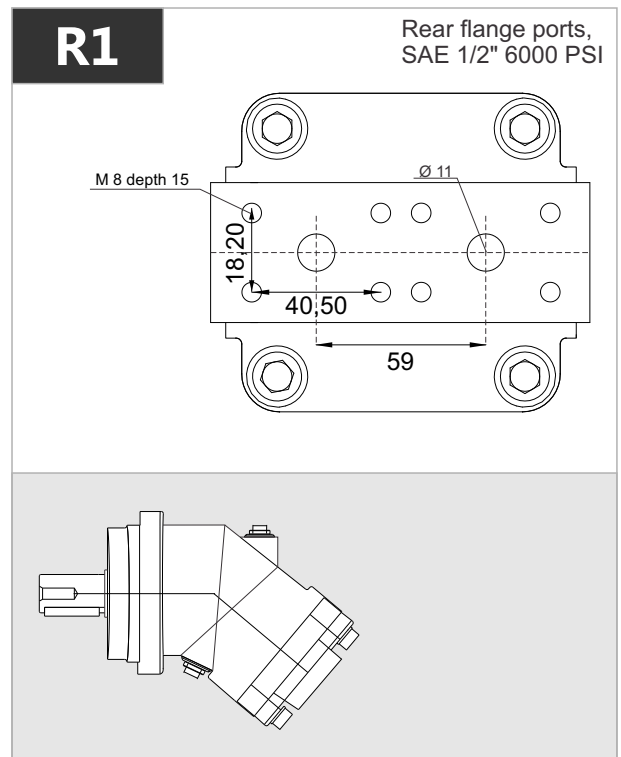
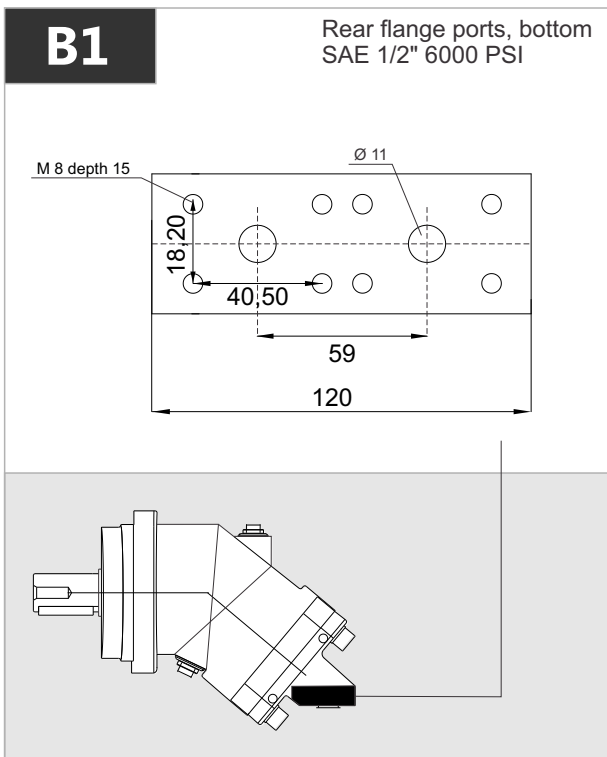
Parallel keyed shaft  
DIN 6885, As8x7x40

Key  
width 8



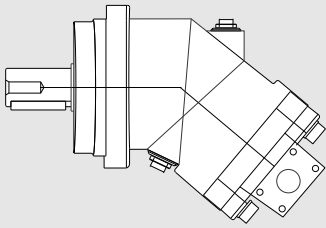
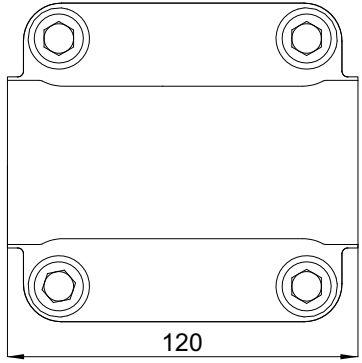


x 1000 rpm	x 1500 rpm	Max. Contin. Pump Speed	Max. Intermit. Pump Speed	Max. Contin. Pressure	Max. Peak Pressure	Torque bar	Torque at 350 bar	Max. Flow	Weight without accessor.	Weight with accessor.	Max. Motor Temp.	Min. Motor Temp.
40,20 cc	60,30 cc	5600 rpm	6300 rpm	400 bar	450 bar	0.68 m.N/bar	228 m.N	225	11,50 kg	11,90 kg	-25°	110°



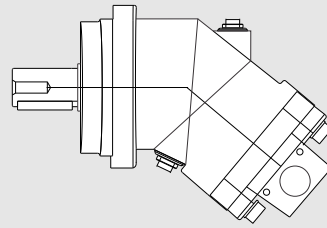
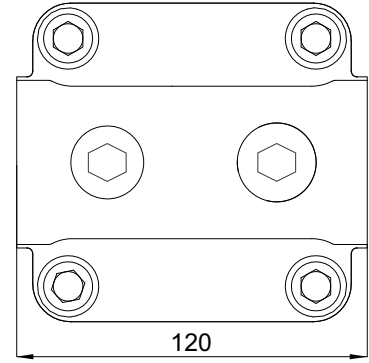
**D1-D2**

Side flange ports A and B  
SAE 1/2" 6000 PSI



**D3**

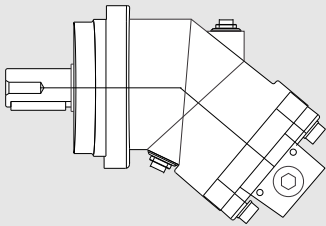
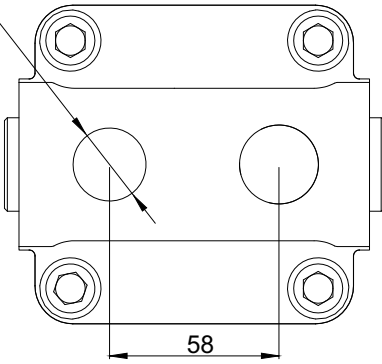
Side threaded ports A and B



**R2**

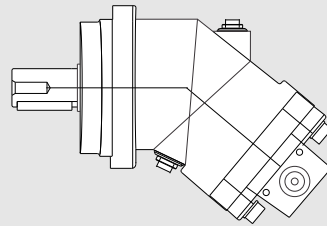
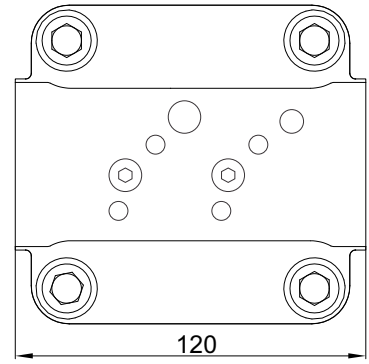
Rear threaded ports

M27x2 prof. 16



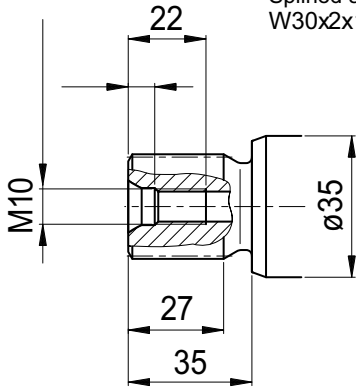
**D4**

Side threaded ports A and B



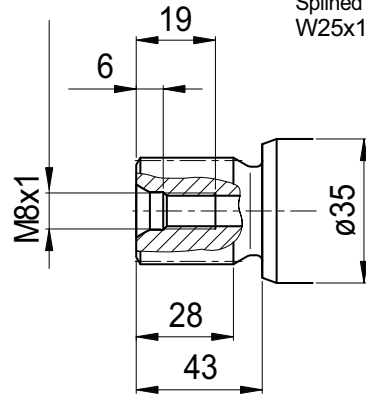
**S1**

Splined shaft DIN 5480  
W30x2x14x9g



**S2**

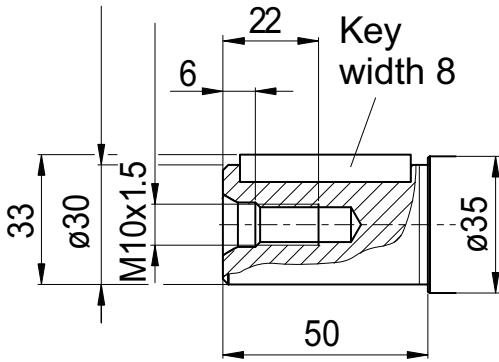
Splined shaft DIN 5480  
W25x1.25x18x9g



**K1**

Parallel keyed shaft  
DIN 6885, As8x7x40

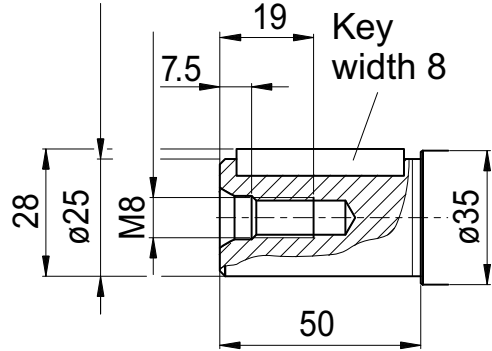
Key  
width 8

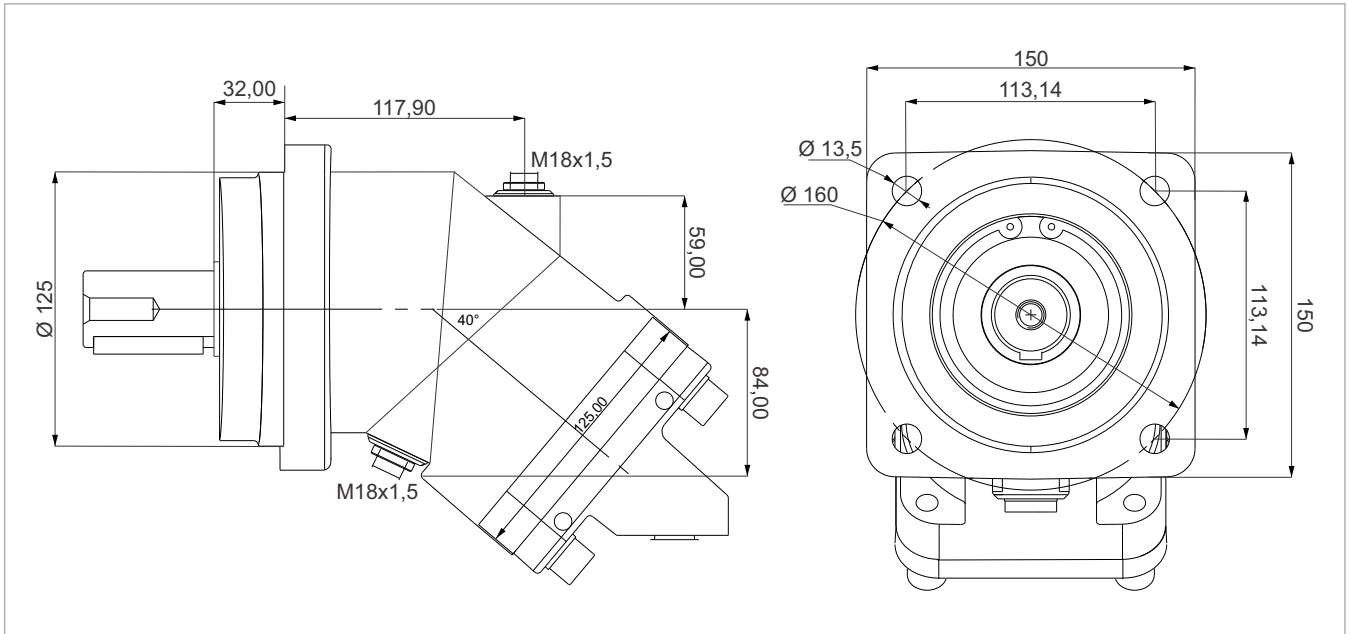


**K2**

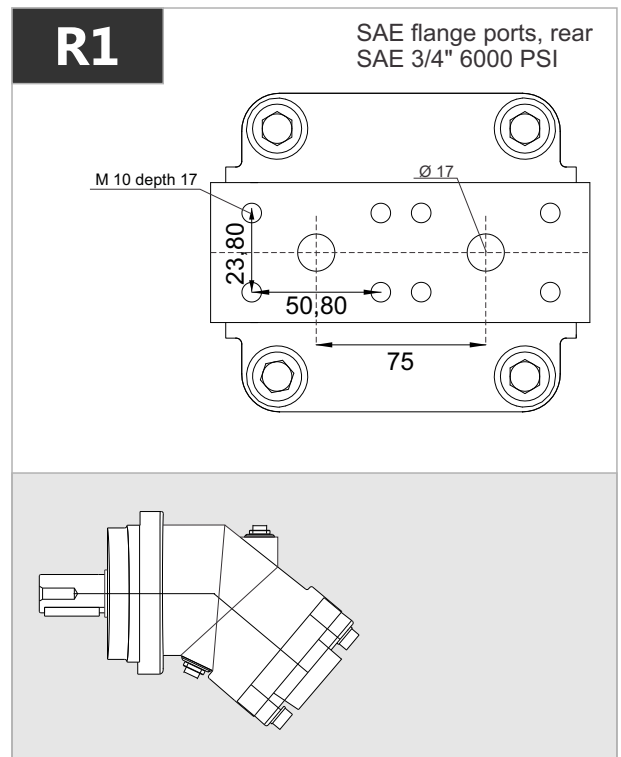
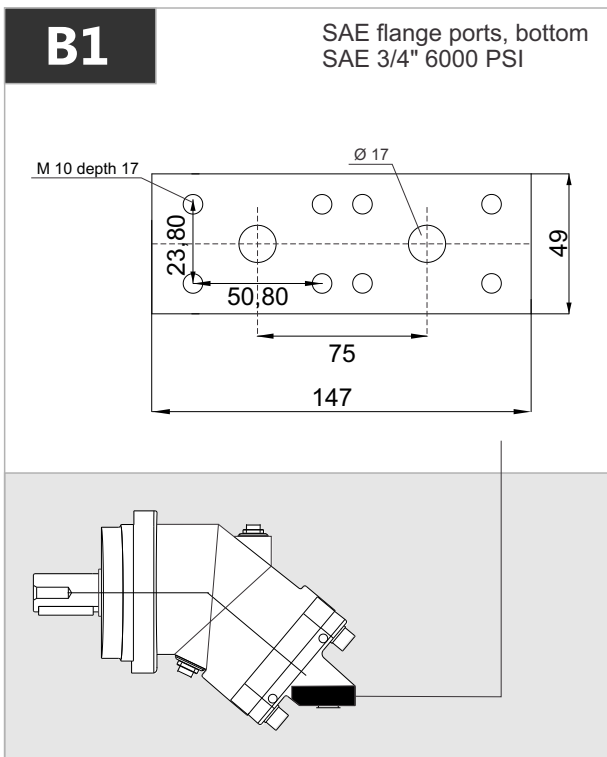
Parallel keyed shaft  
DIN 6885, As8x7x40

Key  
width 8



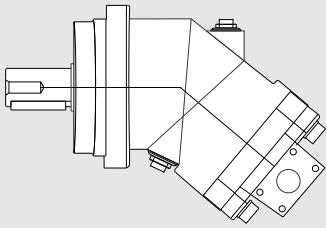
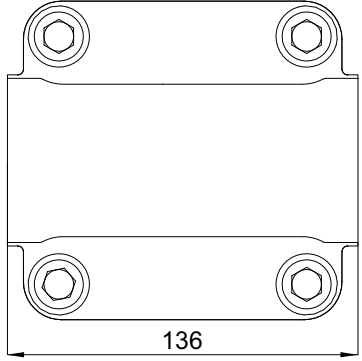


x 1000 rpm	x 1500 rpm	Max. Contin. Pump Speed	Max. Intermit. Pump Speed	Max. Contin. Pressure	Max. Peak Pressure	Torque bar	Torque at 350 bar	Max. Flow	Weight without accessor.	Weight with accessor.	Max. Motor Temp.	Min. Motor Temp.
50,00 cc	75,00 cc	5000 rpm	5500 rpm	400 bar	450 bar	0.80 m.N/bar	280 m.N	250	17,50 kg	18,00 kg	-25°	110°



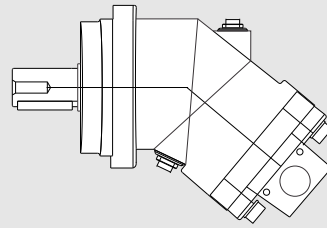
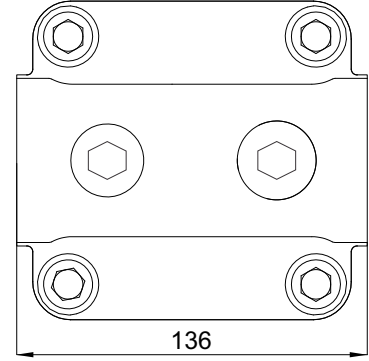
**D1-D2**

SAE flange ports, side A and B  
SAE 3/4" 6000 PSI



**D3**

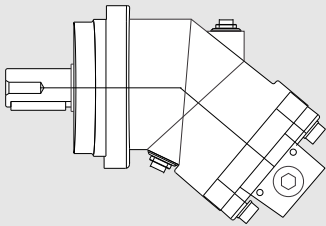
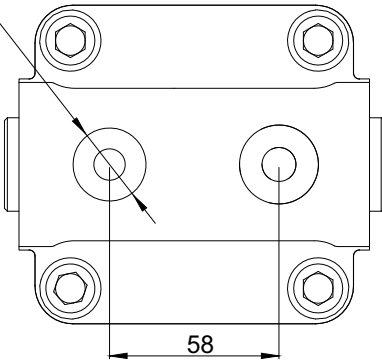
Side threaded ports A and B



**R2**

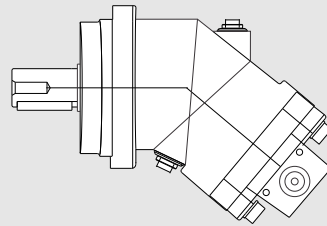
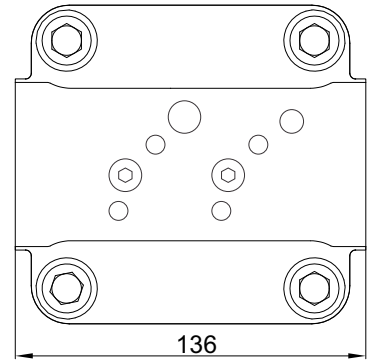
Rear threaded ports

M33x2 prof. 18



**D4**

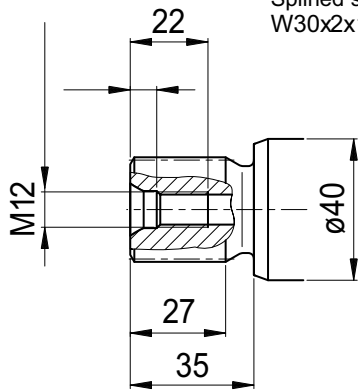
Side threaded ports A and B





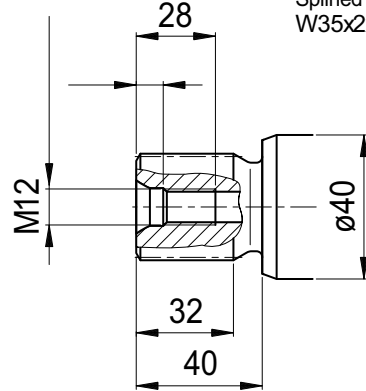
**S1**

Splined shaft DIN 5480  
W30x2x14x9g



**S2**

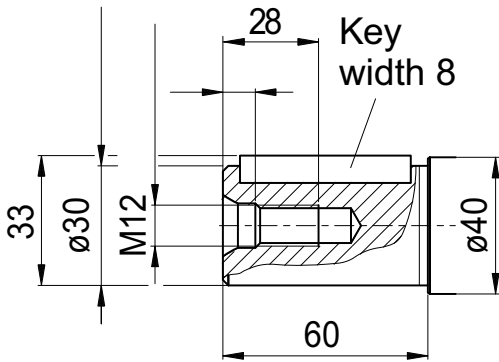
Splined shaft DIN 5480  
W35x2x16x9g



**K1**

Parallel keyed shaft  
DIN 6885, As8x7x50

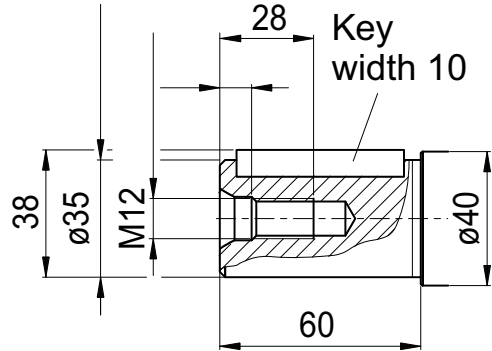
Key  
width 8

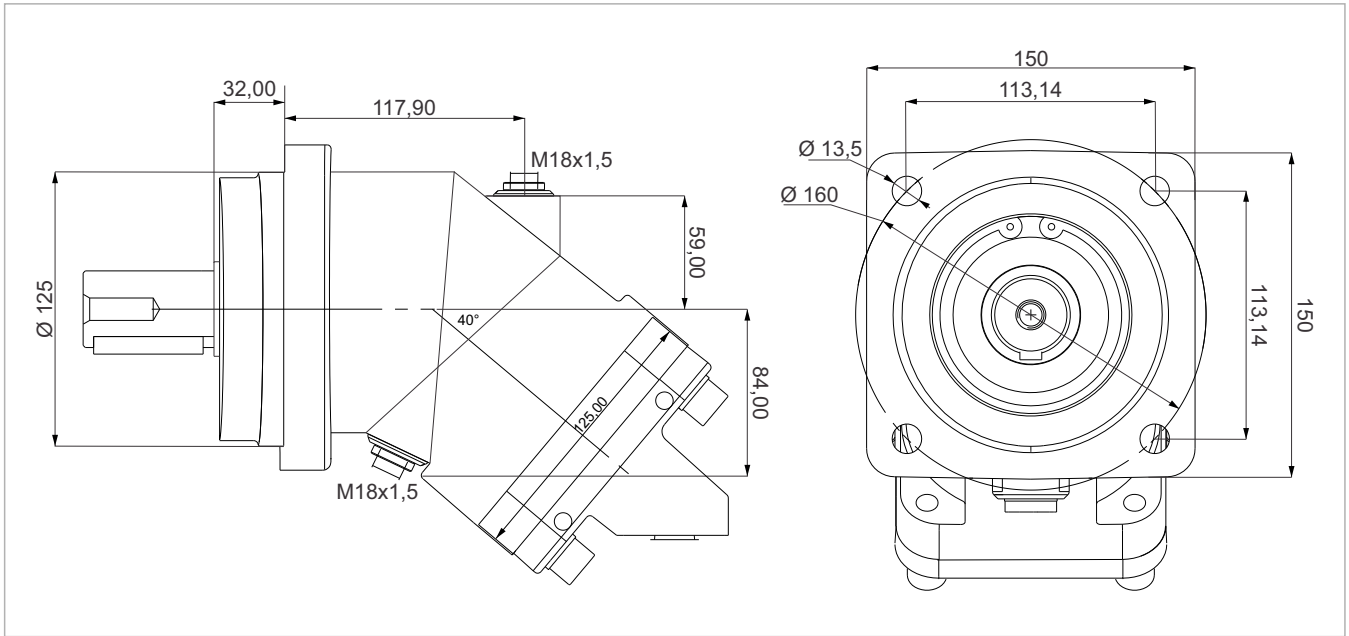


**K2**

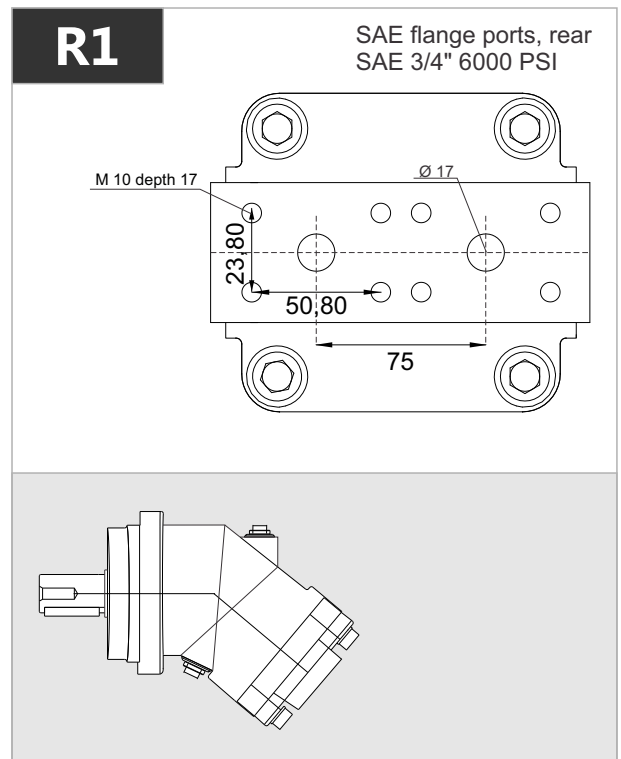
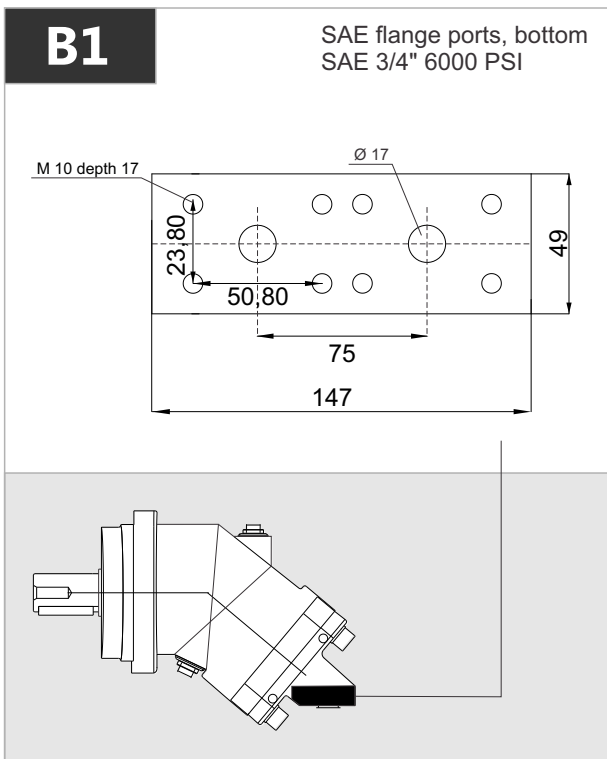
Parallel keyed shaft  
DIN 6885, As10x8x50

Key  
width 10



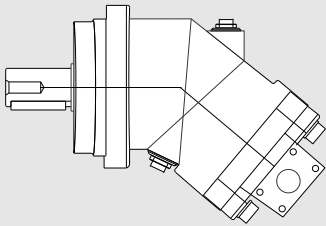
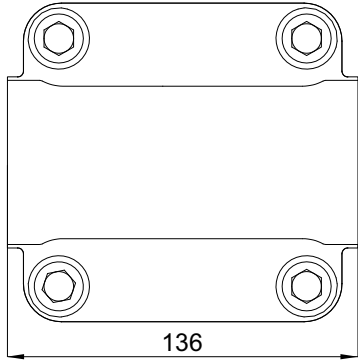


x 1000 rpm	x 1500 rpm	Max. Contin. Pump Speed	Max. Intermit. Pump Speed	Max. Contin. Pressure	Max. Peak Pressure	Torque bar	Torque at 350 bar	Max. Flow	Weight without accessor.	Weight with accessor.	Max. Motor Temp.	Min. Motor Temp.
56,40 cc	84,60 cc	5000 rpm	5500 rpm	400 bar	450 bar	0,92 m.N/bar	320 m.N	282	18,00 kg	18,50 kg	-25°	110°



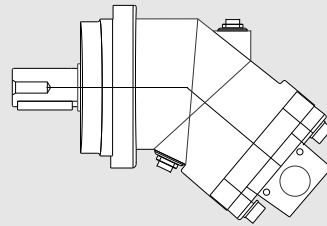
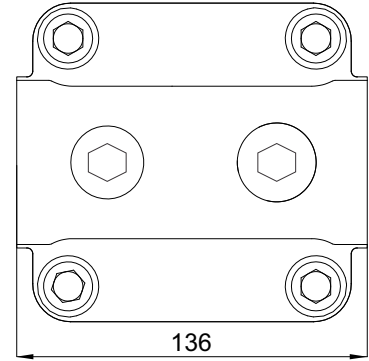
## D1-D2

SAE flange ports, side A and B  
SAE 3/4" 6000 PSI



## D3

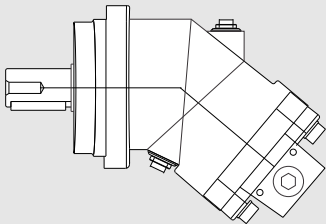
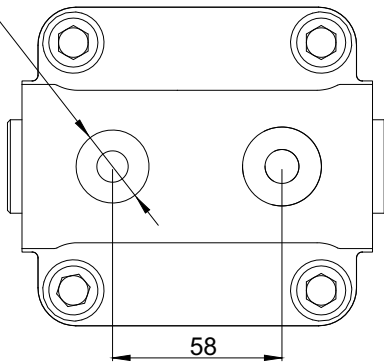
Side threaded ports A and B



## R2

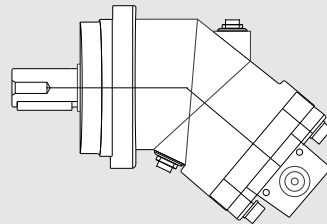
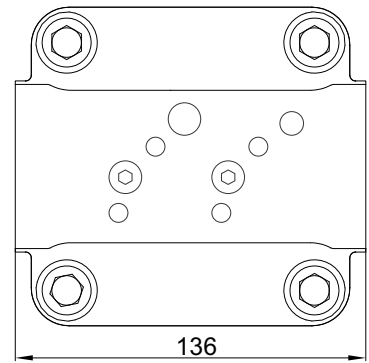
Rear threaded ports

M33x2 prof. 18



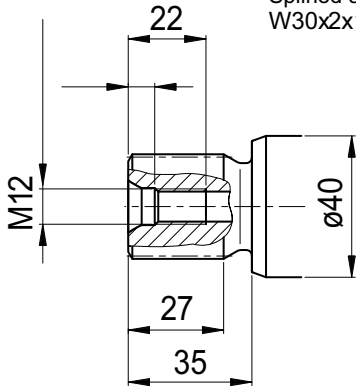
## D4

Side threaded ports A and B



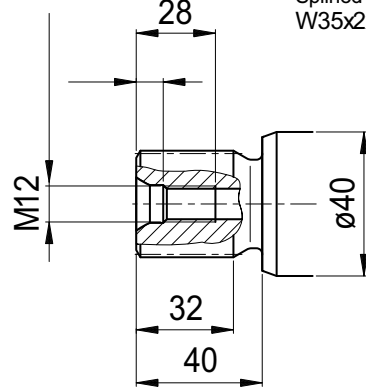
**S1**

Splined shaft DIN 5480  
W30x2x14x9g



**S2**

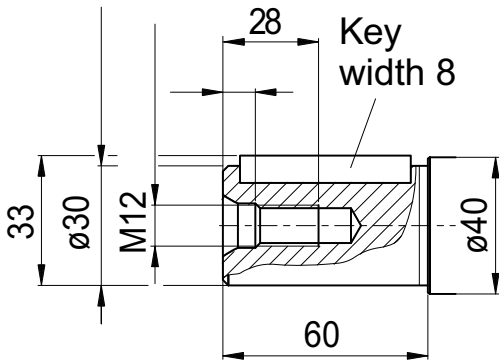
Splined shaft DIN 5480  
W35x2x16x9g



**K1**

Parallel keyed shaft  
DIN 6885, As8x7x50

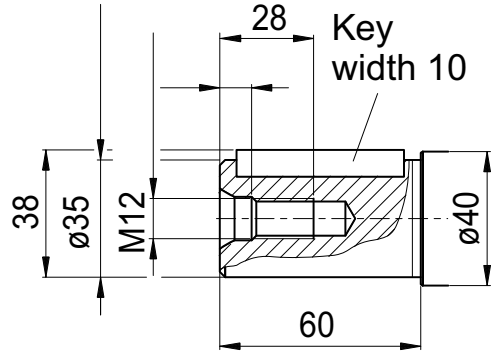
Key  
width 8

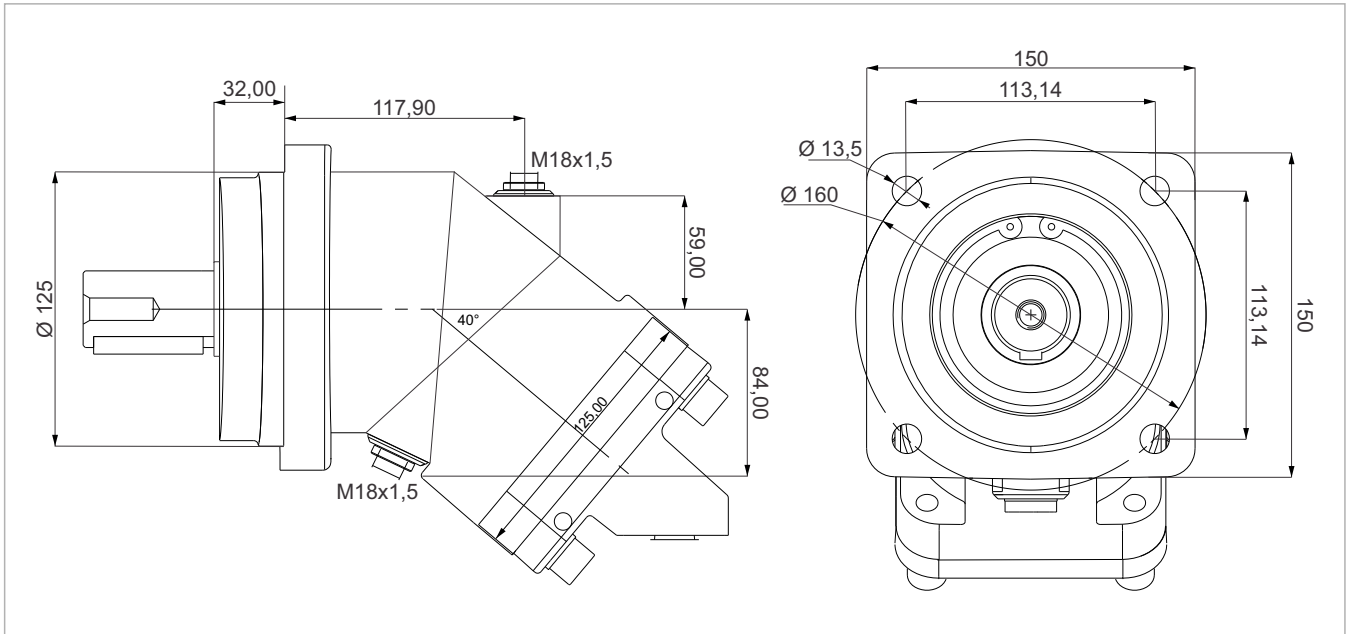


**K2**

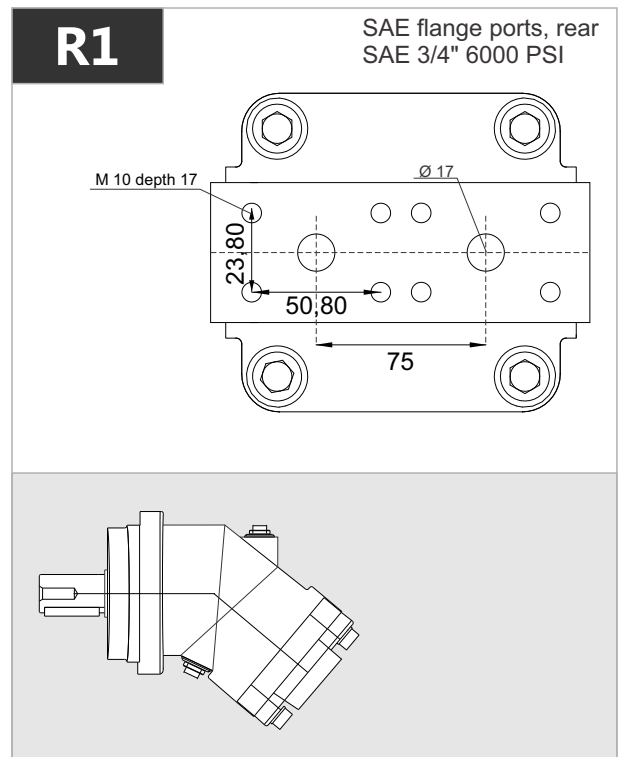
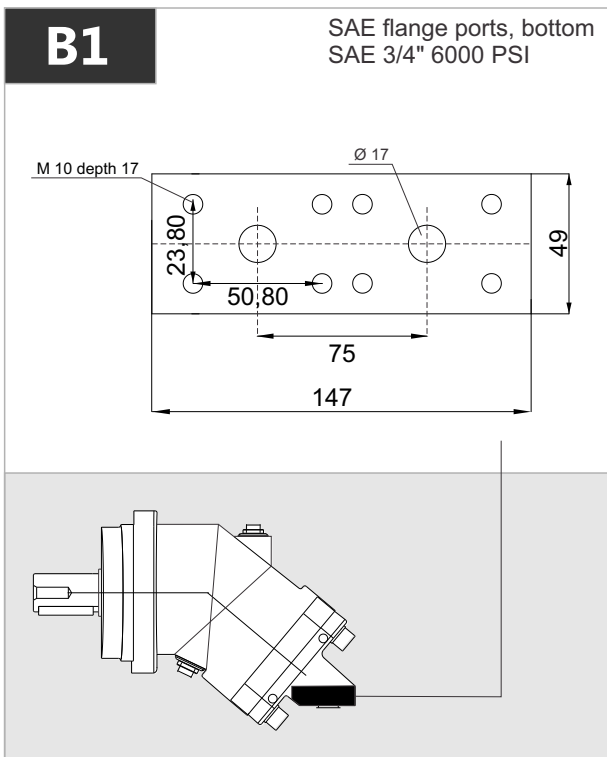
Parallel keyed shaft  
DIN 6885, As10x8x50

Key  
width 10



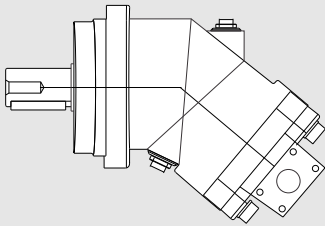
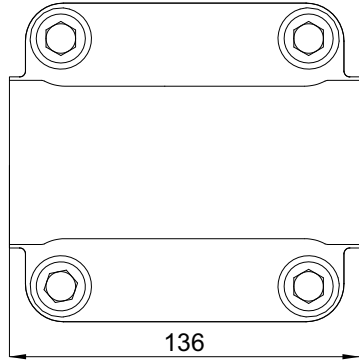


x 1000 rpm	x 1500 rpm	Max. Contin. Pump Speed	Max. Intermit. Pump Speed	Max. Contin. Pressure	Max. Peak Pressure	Torque bar	Torque at 350 bar	Max. Flow	Weight without accessor.	Weight with accessor.	Max. Motor Temp.	Min. Motor Temp.
63,00 cc	94,50 cc	5000 rpm	5500 rpm	400 bar	450 bar	1.00 m.N/bar	350 m.N	315	18,00 kg	18,50 kg	-25°	110°



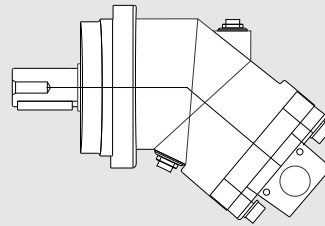
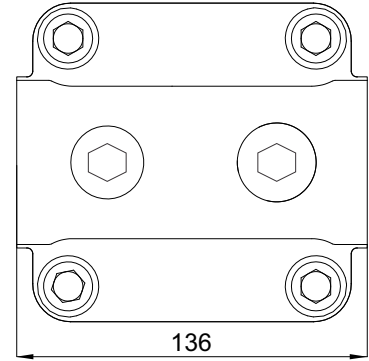
## D1-D2

SAE flange ports, side A and B  
SAE 3/4" 6000 PSI



## D3

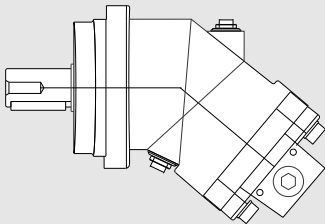
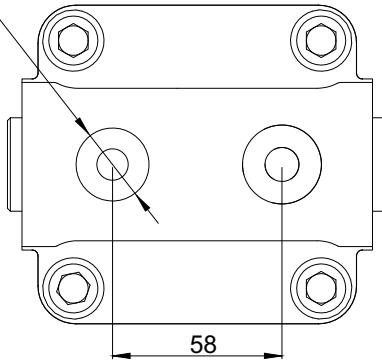
Side threaded ports A and B



## R2

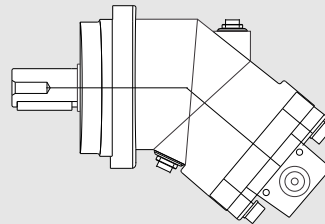
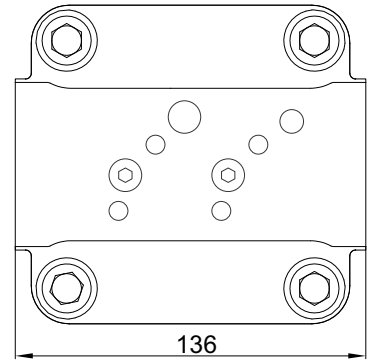
Rear threaded ports

M33x2 prof. 18



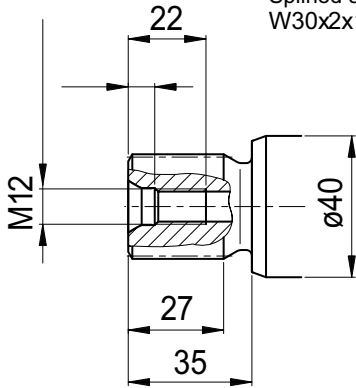
## D4

Side threaded ports A and B



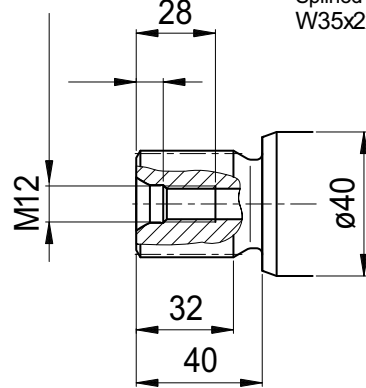
**S1**

Splined shaft DIN 5480  
W30x2x14x9g



**S2**

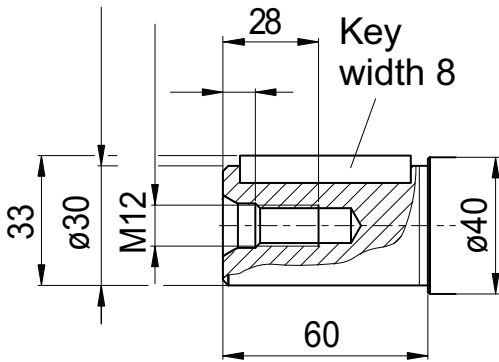
Splined shaft DIN 5480  
W35x2x16x9g



**K1**

Parallel keyed shaft  
DIN 6885, As8x7x50

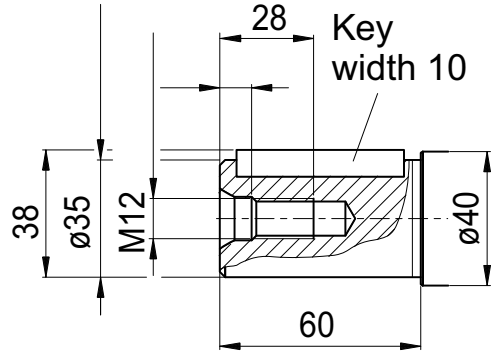
Key  
width 8

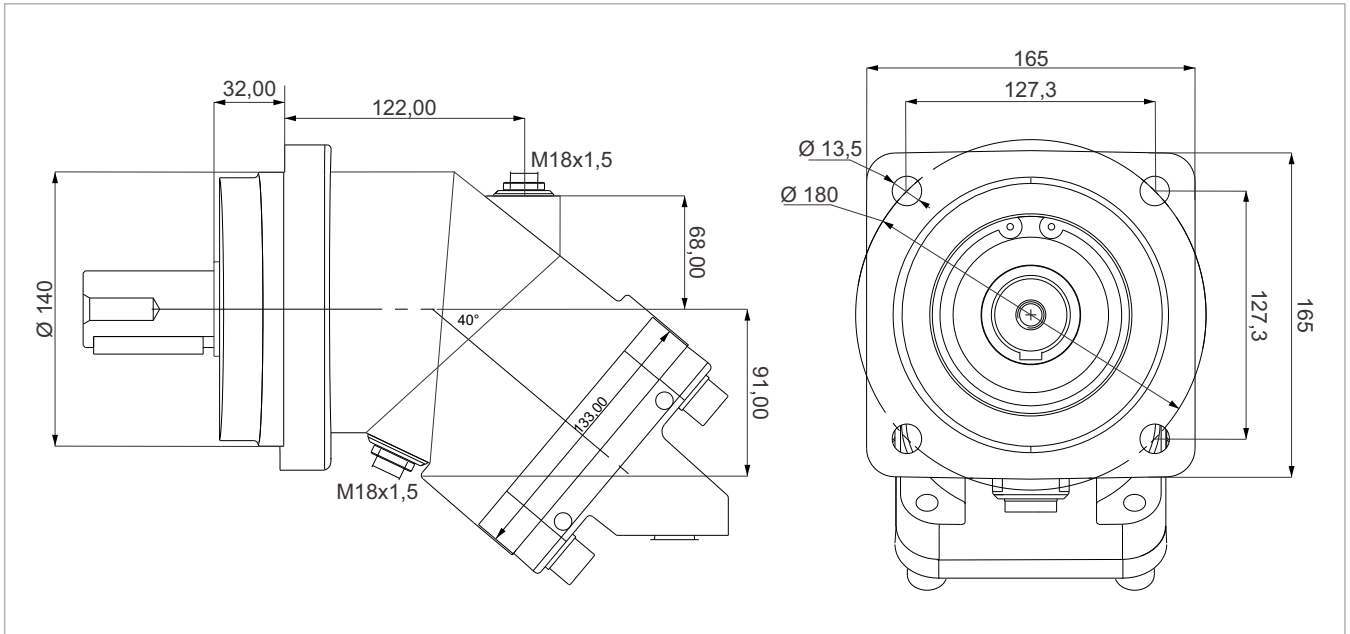


**K2**

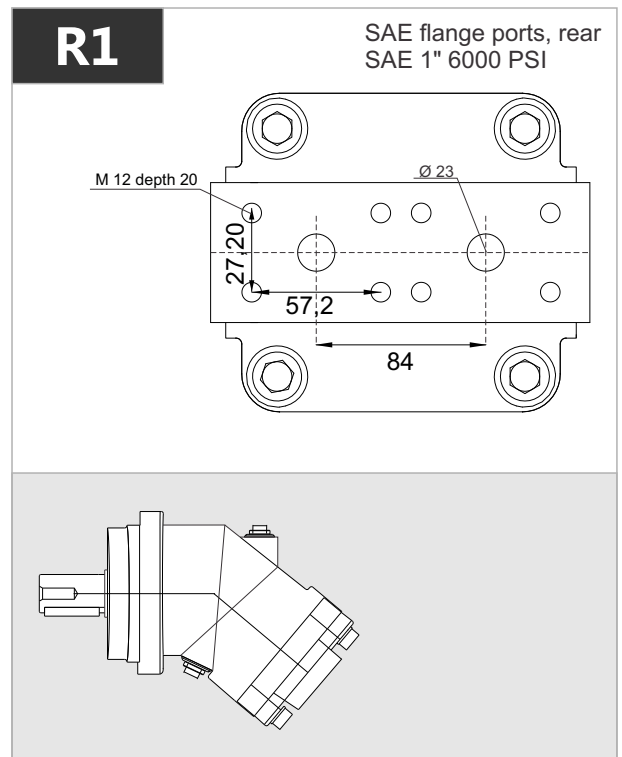
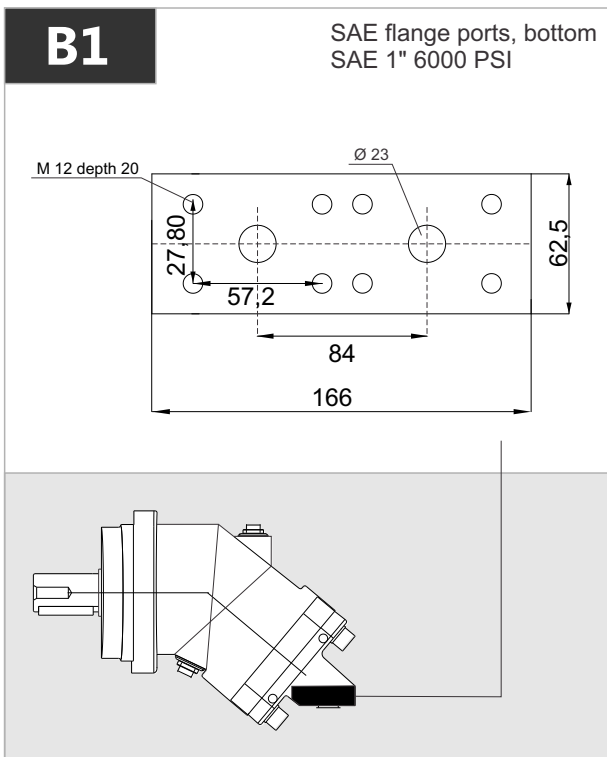
Parallel keyed shaft  
DIN 6885, As10x8x50

Key  
width 10





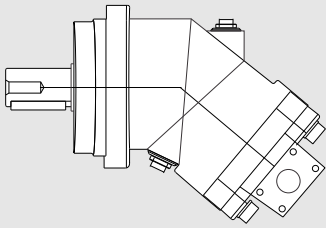
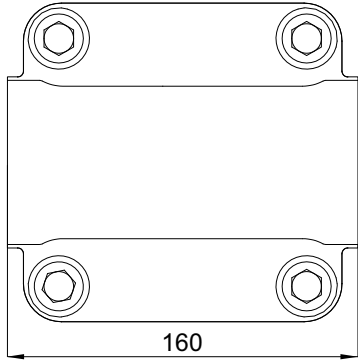
x 1000 rpm	x 1500 rpm	Max. Contin. Pump Speed	Max. Intermit. Pump Speed	Max. Contin. Pressure	Max. Peak Pressure	Torque bar	Torque at 350 bar	Max. Flow	Weight without accessor.	Weight with accessor.	Max. Motor Temp.	Min. Motor Temp.
80,00 cc	120,00 cc	4400 rpm	4900 rpm	400 bar	450 bar	1.28 m.N/bar	440 m.N	352	22,00 kg	22,50 kg	-25°	110°





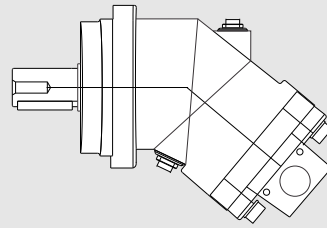
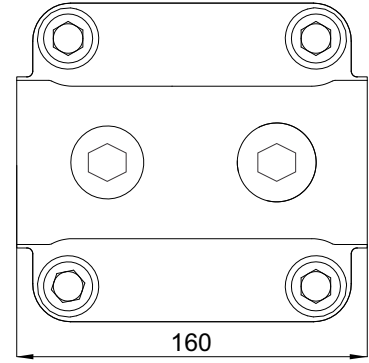
**D1-D2**

SAE flange ports, side  
SAE 1" 6000 PSI



**D3**

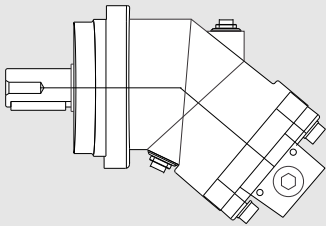
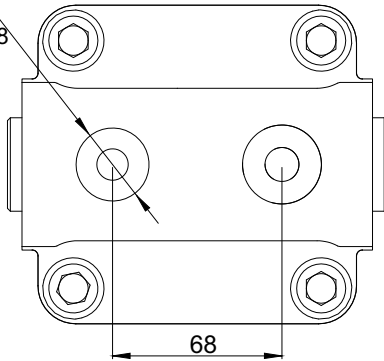
Side threaded ports



**R2**

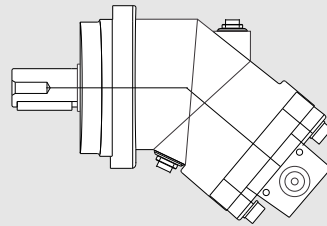
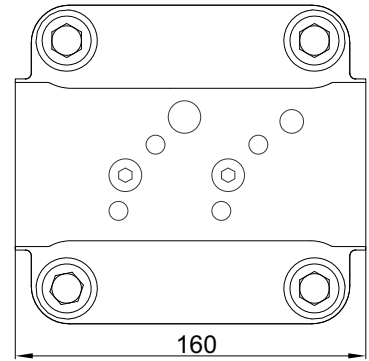
Rear threaded ports

M33x2 depth 18



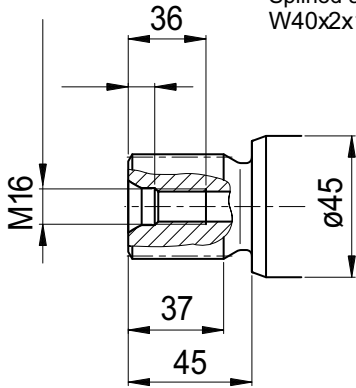
**D4**

Side threaded ports



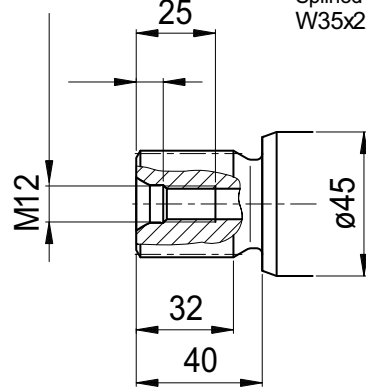
**S1**

Splined shaft DIN 5480  
W40x2x18x9g



**S2**

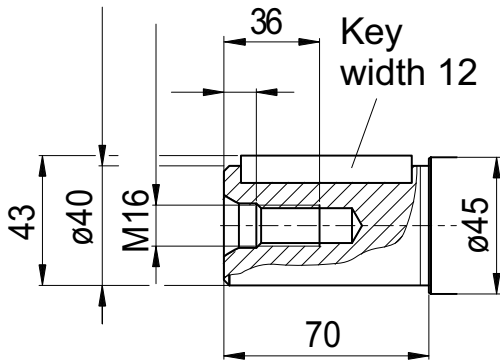
Splined shaft DIN 5480  
W35x2x16x9g

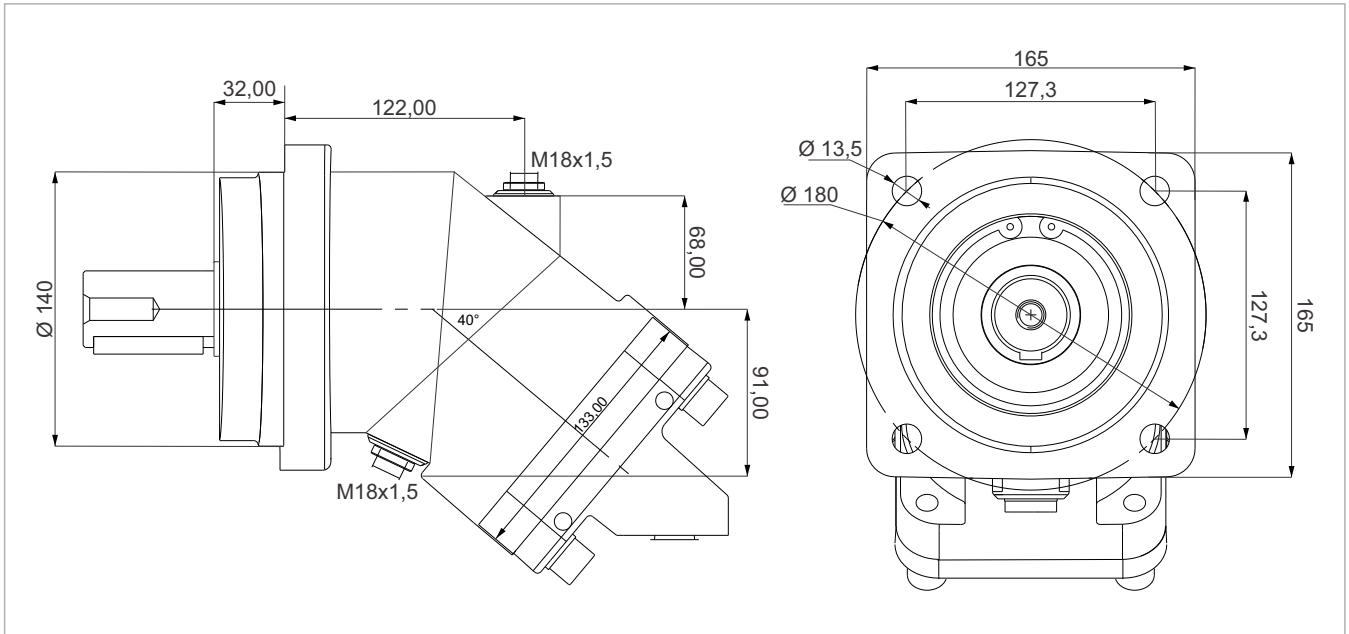


**K1**

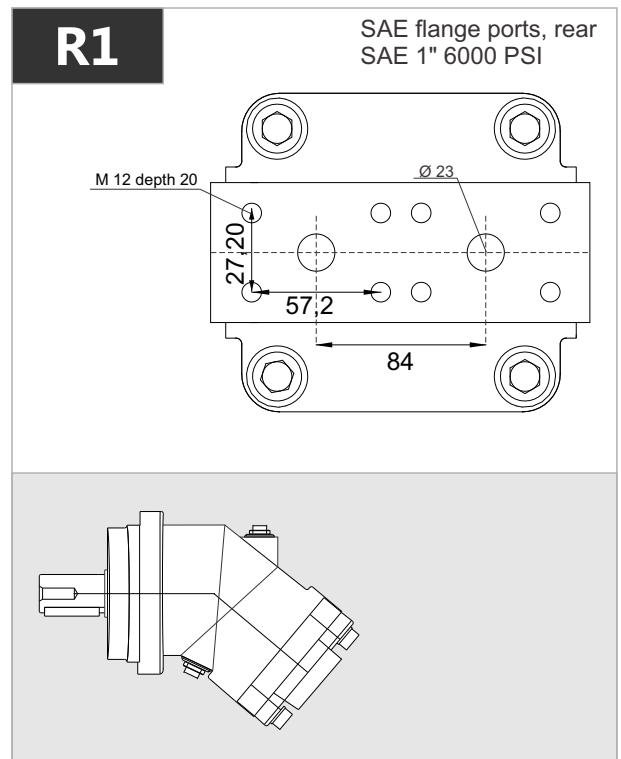
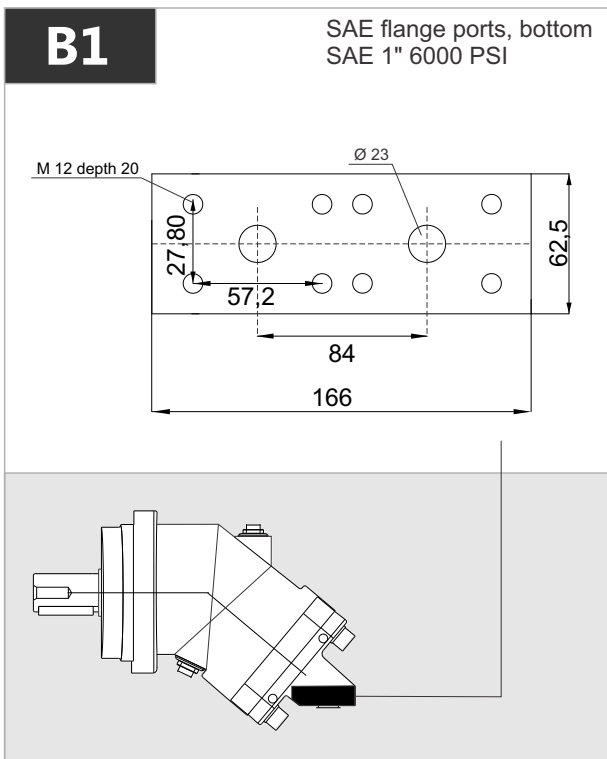
Parallel keyed shaft  
DIN 6885, As12x8x56

Key  
width 12



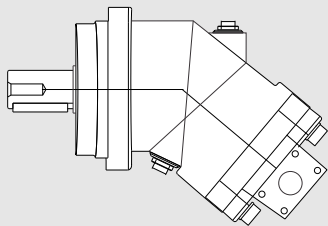
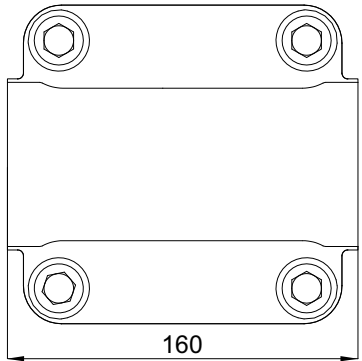


x 1000 rpm	x 1500 rpm	Max. Contin. Pump Speed	Max. Intermit. Pump Speed	Max. Contin. Pressure	Max. Peak Pressure	Torque bar	Torque at 350 bar	Max. Flow	Weight without accessor.	Weight with accessor.	Max. Motor Temp.	Min. Motor Temp.
108,4 cc	162,6 cc	4000 rpm	4400 rpm	400 bar	450 bar	1.69 m.N/bar	600 m.N	433	22,50 kg	23,00 kg	-25°	110°



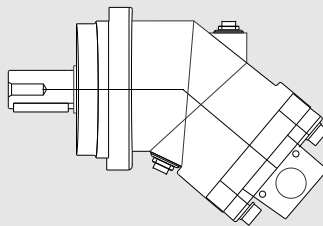
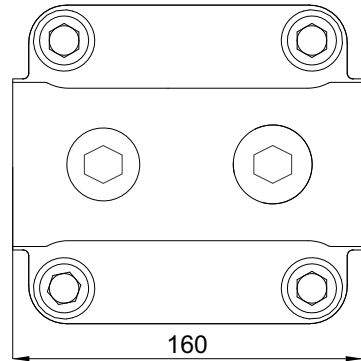
## D1-D2

SAE flange ports, side  
SAE 1" 6000 PSI



## D3

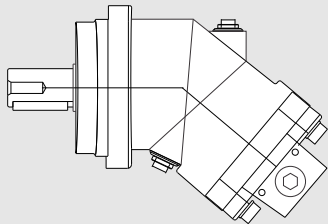
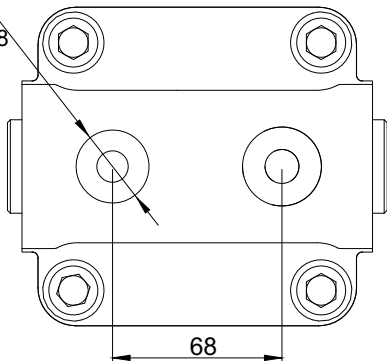
Side threaded ports



## R2

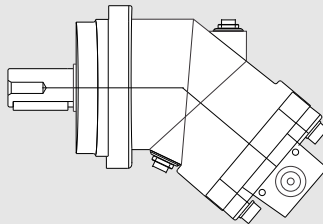
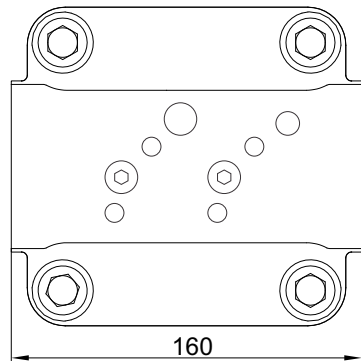
Rear threaded ports

M33x2 depth 18



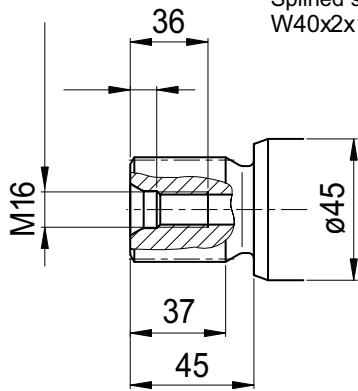
## D4

Side threaded ports



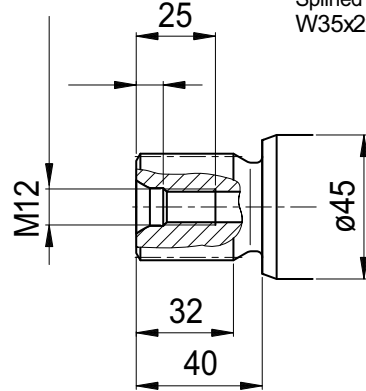
**S1**

Splined shaft DIN 5480  
W40x2x18x9g



**S2**

Splined shaft DIN 5480  
W35x2x16x9g



**K1**

Parallel keyed shaft  
DIN 6885, As12x8x56

Key  
width 12

